



Tsunami Deployer eRoom Exporter Guide

Supports extraction of all rooms on the server and guides migration to Microsoft SharePoint.

**Version 4.0
Last Updated: March 31, 2024**

Table of Contents

| | |
|---|-------------|
| PREFACE | IV |
| INTENDED AUDIENCE..... | IV |
| CONVENTIONS | IV |
| TECHNICAL SUPPORT..... | V |
| COMMENTS AND SUGGESTIONS | V |
| 1 INSTALLING TZUNAMI EROOM EXPORTER | 1-1 |
| 1.1 SYSTEM REQUIREMENTS..... | 1-2 |
| 1.1.1 Integrated Module Requirements | 1-2 |
| 1.1.2 Standalone Tool Requirements..... | 1-2 |
| 1.2 PERMISSION REQUIREMENTS..... | 1-3 |
| 1.2.1 Connecting to eRoom Server | 1-3 |
| 1.3 INSTALLING TZUNAMI EROOM EXPORTER..... | 1-3 |
| 1.4 CONFIGURATION OF TZUNAMI SERVICE SETTINGS | 1-5 |
| 1.5 UNINSTALL TZUNAMI EROOM EXPORTER | 1-6 |
| 1.5.1 Uninstallation using Installer | 1-6 |
| 1.5.2 Uninstallation using Control Panel..... | 1-7 |
| 2 TZUNAMI EROOM EXPORTER..... | 2-8 |
| 2.1 OVERVIEW | 2-9 |
| 2.1.1 Supported Types | 2-9 |
| 2.1.2 Security | 2-9 |
| 2.2 EXPORTING FROM EROOM | 2-11 |
| 2.3 COMMAND-LINE EXPORT..... | 2-18 |
| 2.4 LOGGING SETTINGS..... | 2-19 |
| 2.5 BEST PRACTICE | 2-20 |
| 3 COPYRIGHT AND TRADEMARK | 3-22 |

List of Tables

| | |
|---|------|
| Table 1-1: System Requirements for Integrated Module | 1-2 |
| Table 1-2: System Requirements for Integrated Module | 1-2 |
| Table 2-1: eRoom Configurations Screen (General) – Description of Fields..... | 2-11 |
| Table 2-2: eRoom Configurations Screen (Advanced) – Description of Fields | 2-12 |
| Table 2-3: eRoom Configurations Screen (Comments) – Description of Fields | 2-13 |
| Table 2-4 eRoom Configurations, Actions Tab - Description of fields | 2-14 |
| Table 2-5: Target Structure Guidelines | 2-20 |

List of Figures

| | |
|--|------|
| Figure 1-1: Welcome Window | 1-3 |
| Figure 1-2: End-User License Agreement..... | 1-4 |
| Figure 1-3: Custom Setup window..... | 1-4 |
| Figure 1-4: Installing Tzunami eRoom Exporter Window | 1-5 |
| Figure 1-5: Installation Complete Window | 1-5 |
| Figure 1-6 Deployer Settings Manager | 1-6 |
| Figure 2-1: eRoom Configuration Screen- General Tab | 2-11 |
| Figure 2-2: eRoom Configurations Screen - Advanced Tab | 2-12 |
| Figure 2-3: eRoom Configurations Screen - Comments Tab..... | 2-13 |
| Figure 2-4 eRoom Configurations Screen – Actions Tab..... | 2-14 |
| Figure 2-5: Folders Selection Screen..... | 2-15 |
| Figure 2-6: Filter Screen | 2-15 |
| Figure 2-7: Destination Folder Screen | 2-16 |
| Figure 2-8: Exporter Progress Screen..... | 2-17 |
| Figure 2-15 Log level Settings | 2-19 |

PREFACE

This guide provides installation procedures for Tsunami eRoom Exporter and detail steps to extract contents from eRoom using Tsunami eRoom Exporter. The guide also describes how to extract contents non-interactive way using command-line instructions and best practice.

This preface contains the following topics.

- Intended Audience
- Conventions
- Technical Support
- Comments and Suggestions

INTENDED AUDIENCE

Tsunami eRoom Exporter Guide is intended for:

- System Administrators who are responsible for exporting eRoom contents and setting migration environment using Tsunami Deployer.
- Project Managers and IT Managers who create and regulate usage of Tsunami Deployer and Tsunami eRoom Exporter.

CONVENTIONS

The following text conventions are used in this document:

- Commands and keywords are given in **boldface**
- Terminal sessions, console screens, or system file names are displayed in `fixed width fonts`



Caution indicates that the described action might result in program malfunction or data loss.



Notes contain helpful suggestions about or references to materials not contained in this manual.



Tips provide information that might help you solve a problem.

TECHNICAL SUPPORT

Before contacting Tsunami Support team, ensure that you are referencing the latest copy of this user guide (Ctrl+Click to follow link) [Tsunami Deployer eRoom Exporter Guide](#).

For more information, please contact Tsunami Support Team at support@tsunami.com

COMMENTS AND SUGGESTIONS

Your feedback is important to us and will help us to provide the most accurate and high quality information possible in our documentation. Send us comments or suggestions by email to support@tsunami.com. Be sure to include as much of the following as possible:

- The document title.
- The location that the document was accessed from (either downloaded from Tsunami web site or the Tsunami Deployer User Guide and Tsunami eRoom Exporter Guide available in Tsunami Deployer).
- The section or chapter number and the original text found in the document.



When you send information to Tsunami Deployer, you grant Tsunami a non-exclusive right to use or distribute the information in any way it believes appropriate without incurring any obligation to you.

1 INSTALLING TZUNAMI EROOM EXPORTER

This chapter contains information about installing Tzunami eRoom Exporter. It contains the following topics:

- *System Requirements*
- *Permission Requirements*
- *Installing Tzunami eRoom Exporter*
- *Uninstall Tzunami eRoom Exporter*

1.1 SYSTEM REQUIREMENTS

1.1.1 Integrated Module Requirements

The following requirements must be met in order to use Tsunami eRoom Exporter as Tsunami Deployer module:

Table 1-1: System Requirements for Integrated Module

| Components | Minimum Requirements |
|-------------------------|---|
| Software | Microsoft .NET framework 4.0 |
| Additional Requirements | eRoom Server (Version 6 and above) configured and running |

1.1.2 Standalone Tool Requirements

The following requirements must be met in order to use Tsunami eRoom Exporter as a standalone tool:

Table 1-2: System Requirements for Integrated Module

| Components | Minimum Requirements |
|----------------------------|--|
| System Processor | 2GHz Pentium processor or equivalent |
| System Memory | 2 GB (Minimum); 4GB (Recommended) |
| Free Disk Space | 50MB (additional space will be required for the Tsunami Deployer projects, depending on the content bring migrated). |
| Supported Operating System | Windows Server 2000/2003/2008/2012, Windows XP, Windows Vista, Windows 7, Windows 8 & Windows 10. |
| Supported Architectures | x86 and x64 |
| Networking | Intranet/Internet access depending on connectivity requirements |
| Display | 800 x 600, 256 colors (minimum); 1024 x 768 high color, 32-bit (recommended) |
| Software | Microsoft .Net Framework 4.0 |
| Additional Requirements | eRoom server (version 6 and above) configured and running |

1.2 PERMISSION REQUIREMENTS

1.2.1 Connecting to eRoom Server

For connecting to eRoom server, the **User** must be the member of **Local Users and Group** on the eRoom server.



If **User** is not allowed to log on, grant user with “**Allow Log on Locally**” permission in the eRoom server.

1.3 INSTALLING TZUNAMI eROOM EXPORTER

There are two ways you can work with Tzunami eRoom Exporter: as an integrated module of Tzunami Deployer or as a standalone tool. Working with Tzunami eRoom Exporter as a standalone tool is especially useful if you do not have Tzunami Deployer installed on the eRoom server. For instructions on installing Tzunami Deployer, refer to the ***Tzunami Deployer Installation Guide***.

You must install Tzunami eRoom Exporter on the eRoom Server.



To install Tzunami eRoom Exporter as an integrated module, first you must install Tzunami Deployer on the eRoom Server. For more information about installing Tzunami Deployer, refer to the ***Tzunami Deployer Installation Guide***.

To install Tzunami eRoom Exporter:

1. Unzip the zip file, and run `TzunamieRoomExporter.msi`. The Tzunami eRoom Exporter setup wizard (Welcome window) will launch. To advance through the install wizard, click **Next** on the bottom of the window.



Figure 1-1: Welcome Window

2. In the End-User Licensing Agreement panel, click **“I accept the terms in the License Agreement”** and click **Next** to continue installation.

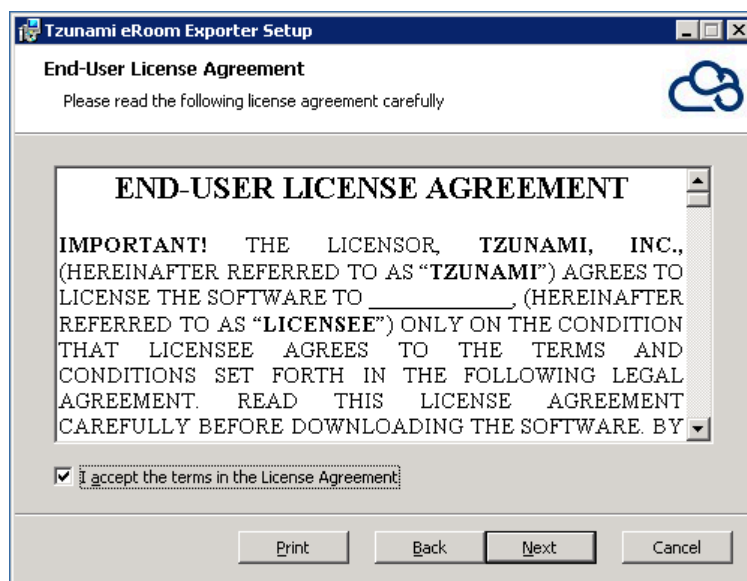


Figure 1-2: End-User License Agreement



You are advised to read the terms of the license carefully before proceeding with the installation. If you decline the license terms, the installation cannot proceed.

3. In the Custom Setup panel, do one of the following:
 - To accept the default Destination Folder, click **Next**.
 - Click **Browse**, locate and select a destination folder, click **OK**, and then click **Next**.

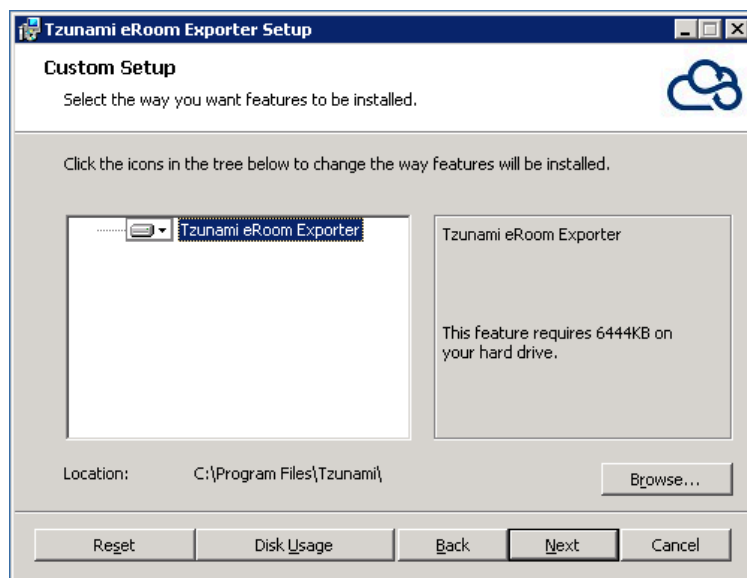


Figure 1-3: Custom Setup window

4. In the Ready to install Tzunami eRoom Exporter panel, click **Install**.

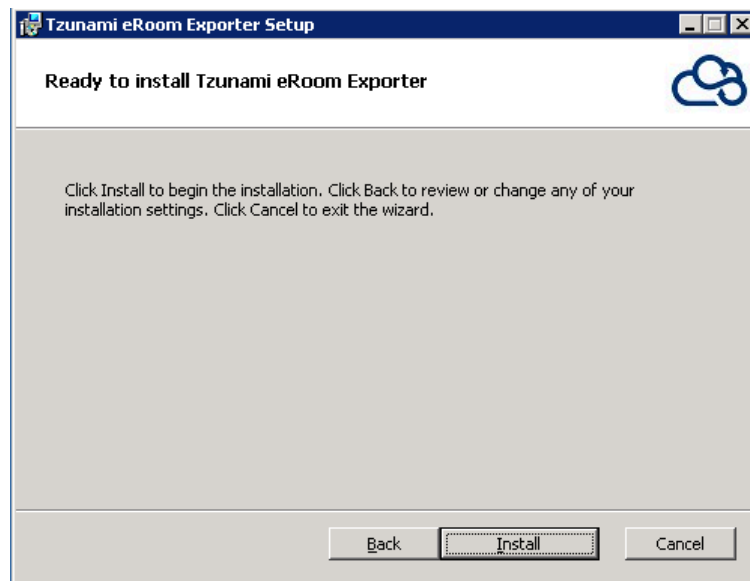


Figure 1-4: Installing Tzunami eRoom Exporter Window

5. In the Completed Tzunami eRoom Exporter Setup Wizard, to exit the wizard, clicks **Finish**.

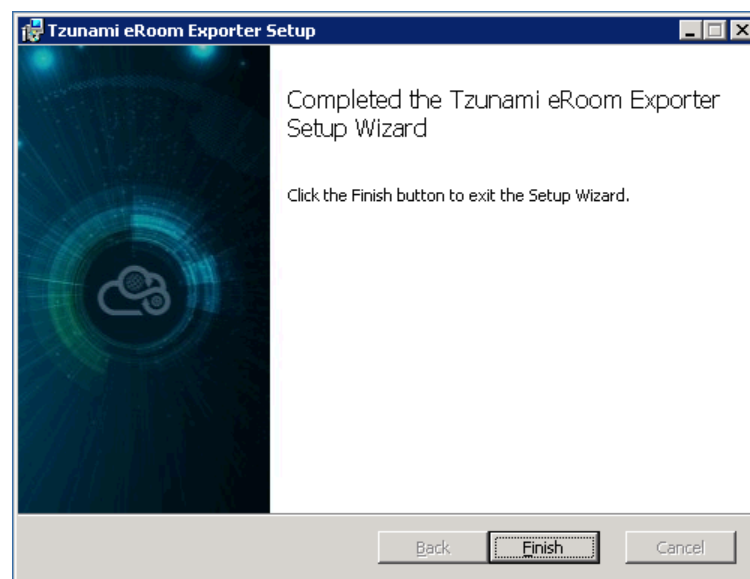


Figure 1-5: Installation Complete Window



When Tzunami eRoom Exporter is installed, it comes with a default license that can be used for evaluation purpose only. This license is limited in time and number of operations.

1.4 CONFIGURATION OF TZUNAMI SERVICE SETTINGS

1. When installing **Tzunami Deployer/Exporter/Remote Service** for the first time, a **Tzunami Service Settings** dialog is displayed. In **Tzunami Service Settings**, the

Licensing Service, Link Resolver Service and O365 AD Service are pointed to localhost (same machine).

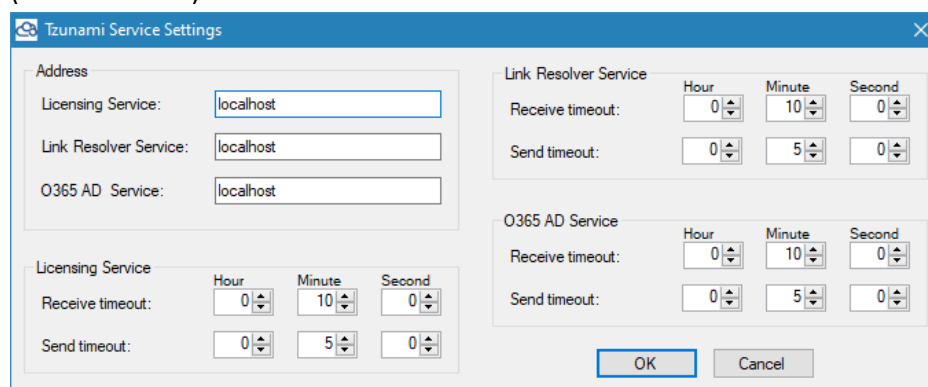


Figure 1-6 Deployer Settings Manager



User can run the **Settings Manager.exe** application from the installation directory to display this service settings dialog at any time and updated the settings to point the Tsunami services as required.

In case of Remote Service installation, restart the Tsunami Remote Service after updating the Tsunami Service Settings.

If these services are installed in other machine, point to that machine with machine name or IP Address.

2. Click on **OK**.

1.5 UNINSTALL TZUNAMI eROOM EXPORTER

This section of the guide illustrates different ways to remove or uninstall Tzunami eRoom Exporter from your eRoom Server. Here are the two different ways to uninstall Tzunami eRoom Exporters:

- Uninstallation using Installer
- Uninstallation using Control Panel

To uninstall Tzunami eRoom Exporter, user needs to be a Local Administrator in the eRoom Exporter installed machine. Uninstalling Tzunami eRoom Exporter is simple and easy. You can remove or uninstall it in no time. You don't need to reboot your computer once the uninstalling process is complete.



Log files, licensing information files etc. will remain after uninstalling Tzunami eRoom Exporter. You can manually delete those files from your computer if needed. By default logs are located at the "C:\Program Files\Tsunami\Deployer 4.0\Exporter\Logs", or where Tzunami eRoom Exporter is installed. Tzunami eRoom Exporter Options information will be available in "C:\Documents and Settings\All users\Application Data\Local\Tsunami" location.

1.5.1 Uninstallation using Installer

To uninstall Tzunami eRoom Exporter using Installer

1. Close **Tsunami eRoom Exporter**.
2. Unzip the zip file, and run `TsunamiRoomExporter.msi`. The Tsunami eRoom setup wizard (Welcome window) will launch. To advance through the remove installation wizard, click “**Next**” at the bottom of the screen.
3. In the Change, repair or remove installation panel, click “**Remove**” button to proceed to remove Tsunami eRoom Exporter from your computer.
4. In the Ready to remove Tsunami eRoom Exporter panel, click “**Remove**” to remove Tsunami eRoom Exporter from your computer.
5. Click **Finish** to exit the setup wizard.



You can right-click Tsunami eRoom Exporter setup (`TsunamiRoomExporter.msi`) file and select **Uninstall** to remove or uninstall Tsunami eRoom Exporter from your computer.

1.5.2 Uninstallation using Control Panel

To uninstall Tsunami eRoom Exporter using Control Panel

1. Close **Tsunami eRoom Exporter**.
2. Click **Start > Control Panel > Add or Remove Programs**.
3. In Add or Remove Programs window, right-click the Tsunami eRoom Exporter application you want to remove, and then click **Uninstall**.

2 TZUNAMI EROOM EXPORTER

This chapter contains information about Tsunami eRoom Exporter. It contains the following topics:

- *Overview*
- *Exporting from eRoom*
- *Command-line Export*
- *Logging settings*
- *Best Practice*

2.1 OVERVIEW

Tsunami eRoom Exporter enables migrating ECM Documentum eRoom content into SharePoint 2007, SharePoint 2010, SharePoint 2013, SharePoint 2016 or SharePoint Online using Tsunami Deployer.

To load eRoom content into Tsunami Deployer, you must first extract the content, using Tsunami eRoom Exporter, into TDX (Tsunami Deployer Export) and STDx (Separate Tsunami Deployer Export) files, as well as extract the files from their source location into your file system. You can then load this TDX file into a Deployer project.



When working with Tsunami Deployer on several machines, you can run an export on one machine and load the exported data on another.

Tsunami eRoom Exporter is distributed as an external tool from Tsunami Deployer.

2.1.1 Supported Types

The following items are exported from eRoom:

- Facilities
- Rooms
- Documents
- Folders
- Links
- Databases
- Mailboxes
- Calendars
- Discussions
- Polls
- Processes Databases
- Project Schedule (eRoom 7 and above)

2.1.2 Security

In addition to the structure and items, Tsunami eRoom Exporter extracts security information. The following permissions are used in the exporter:

- Read Item
- Create Item
- Delete Item
- Edit Item

- Change ACL
- Delete eRoom
- Edit Metadata
- Can Create Rooms
- Can Modify Member List

Each item is assigned an ACL defining the permissions of the various members according to the roles they were assigned.



Items set to read-only will have an ACL in which all the users have read only permissions.

The exporter automatically creates five default roles that are used during the deployment process. The roles include the eRoom roles Observer (Read Item), Participant (Read Item, Create Item, Delete Item, and Edit Item), and Coordinator (Read Item, Create Item, Delete Item, Edit Item, Change ACL, and Delete eRoom), as well as a two additional roles: None (user has no permissions), and Administrator (user has full permissions).

2.2 EXPORTING FROM eRoom

The Tsunami eRoom Exporter enables you to export eRoom content to a TDX file.



When exporting, keep the following in mind:

Export in small chunks: When exporting from your source system, perform the export in small chunks of about 40K-50K files each that have a common business logic or some other logic.

Ensure consistency: Make sure that the content of the different exports does not overlap and that, while exporting, no changes are made to the source data.

To export to a TDX file:

1. If you installed the Tsunami eRoom Exporter as a Tsunami Deployer module, right-click in the eRoom tab source store area and select **Export eRoom to TDX**.

Or

If you installed the exporter as a standalone tool, double-click the **Tsunami eRoom Exporter** icon.

Or

Click **Start > All Programs > Tsunami > Tsunami eRoom Exporter**.

The Welcome screen of the Export Wizard appears.

2. Click the **General** tab and enter general export information.

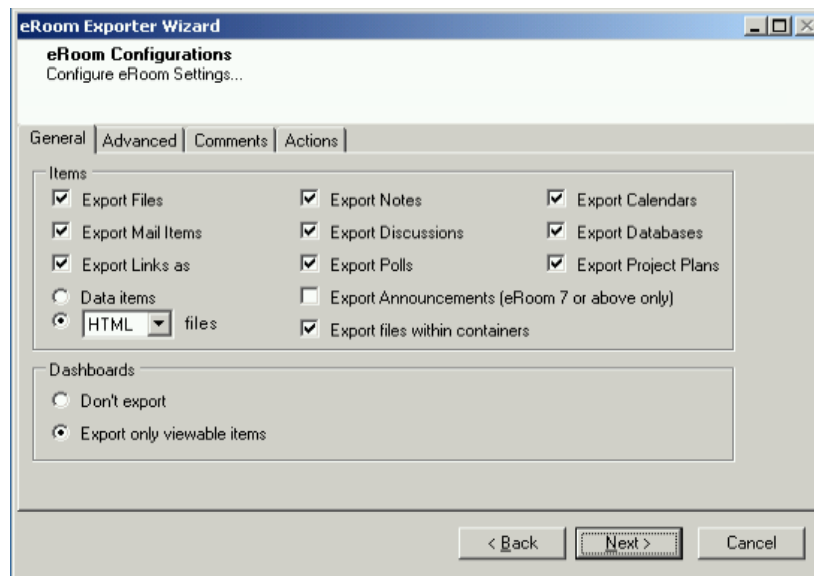



Figure 2-1: eRoom Configuration Screen- General Tab

Table 2-1: eRoom Configurations Screen (General) – Description of Fields

| Field | Description |
|-------------------|---|
| Items | |
| Export Files | Check this option if you wish to export Files. |
| Export Mail items | Check this option if you wish to export Mail items. |

| Field | Description |
|--|--|
| Export Links as | Check this option if you wish to export links as data items or export links as ASPX/HTML files |
| Export Notes | Check this option if you wish to export Notes. |
| Export Discussions | Check this option if you wish to export Discussions. |
| Export Polls | Check this option if you wish to export Polls. |
| Export Announcement (eRoom 7 or above only) | Check this option if you wish to export Announcement.  This option has no effect on versions prior to eRoom 7. |
| Export Calendars | Check this option if you wish to export Calendars. |
| Export Databases | Check this option if you wish to export Databases. |
| Export Project Plans | Check this option if you wish to export Project Plans. |
| Export files within containers | Check this option if you wish to export files of particular containers (For e.g. Database, Poll etc.) even if Export Files option is not selected. |
| Dashboards | Specify whether to export only viewable items, or not to export dashboards at all (eRoom 7 and above). |

- Click the **Advanced** tab to enter advanced export information.

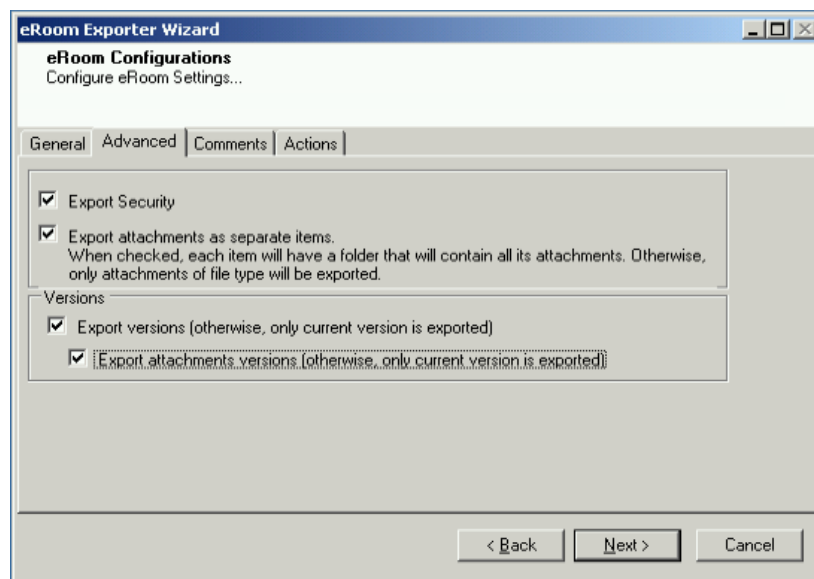


Figure 2-2: eRoom Configurations Screen - Advanced Tab

Table 2-2: eRoom Configurations Screen (Advanced) – Description of Fields

| Field | Description |
|-------------------------------------|--|
| Export Security | Check this option if you wish to export the security settings of items. |
| Export attachment as separate items | Check this option to export all attachments of an item into a folder named <i><ItemName> attachments</i> . If you do not check this option, files and folders are exported as attachments of the items and all other type of attachments are exported as independent items at the same level as the root item. |
| Versions | |
| Export versions | Check this option if you wish to export all versions of items. If you do not check this option, only the latest version of each item is exported. |

| Field | Description |
|-----------------------------|--|
| Export attachments versions | Check this option to export all version of each attachment. If you do not check this option, only the latest version of each attachment will be exported as a separate attachment. |



If a folder is an **attachment**, the exporter adds the folder name as a prefix to all documents found in that folder, but does not export the folder itself as an attachment.

- Click the **Comments** tab to enter comments information.

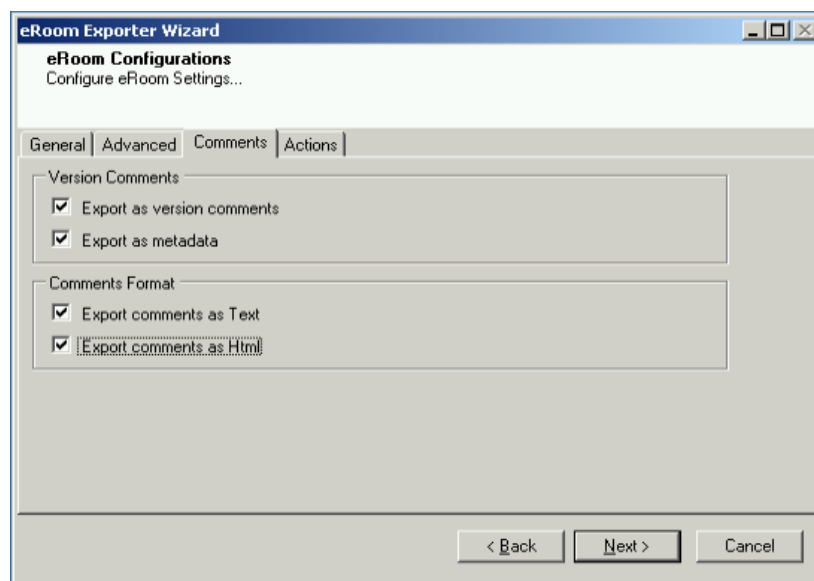



Figure 2-3: eRoom Configurations Screen - Comments Tab

Table 2-3: eRoom Configurations Screen (Comments) – Description of Fields

| Field | Description |
|----------------------------|--|
| Version comments | |
| Export as version comments | Check this option if you wish to export the Version Comments as actual Version Comments.  SharePoint version comments are limited to 1024 characters. Longer comments will be truncated. |
| Export as metadata | Check this option to export Version Comments of items as metadata. |
| Comments Format | |
| Export comments as Text | Check this option if you wish to export comments as plain texts. |
| Export comments as Text | Check this option if you wish to export comments in HTML format. |

- Click on **Actions** tab.

The **Actions** tab allows you to use different actions that can be taken in the exporter.

- Auto Pause:** The export process is paused and resumed using this functionality at a set time each day. The feature can be turned on or off

using the **Use Auto Pause** check box. The feature can be checked by the user, who can also select the pause and resume times. The user can deselect it to turn off the feature.

The screenshot shows a window titled "eRoom Exporter Wizard" with a sub-header "eRoom Configurations" and the instruction "Configure eRoom Settings...". There are four tabs: "General", "Advanced", "Comments", and "Actions", with "Actions" being the active tab. Inside the "Actions" tab, there is a section titled "Auto Pause". Within this section, the checkbox "Use Auto Pause" is checked. Below this checkbox are two time selection fields: "Pause export everyday at :" with a value of "09:00" and "(24 Hour Time Format)", and "Resume export everyday at :" with a value of "18:00" and "(24 Hour Time Format)". At the bottom of the window are three buttons: "< Back", "Next >", and "Cancel".

Figure 2-4 eRoom Configurations Screen – Actions Tab

Table 2-4 eRoom Configurations, Actions Tab - Description of fields

| Field | Description |
|----------------------------|--|
| Auto Pause | |
| Use Auto Pause | To use the auto-pause and resume feature, select this option. To turn off this function, uncheck this box. |
| Pause export every day at | Set the daily time that the export process should pause. |
| Resume export every day at | Set the daily time for restarting the interrupted export operation. |

The settings for actions are only applied to this exporter instance that is currently executing when the user clicks the **Next** button.

6. Click **Next**. The Folders screen appears.

Navigate the eRoom folders and select the folders to export.

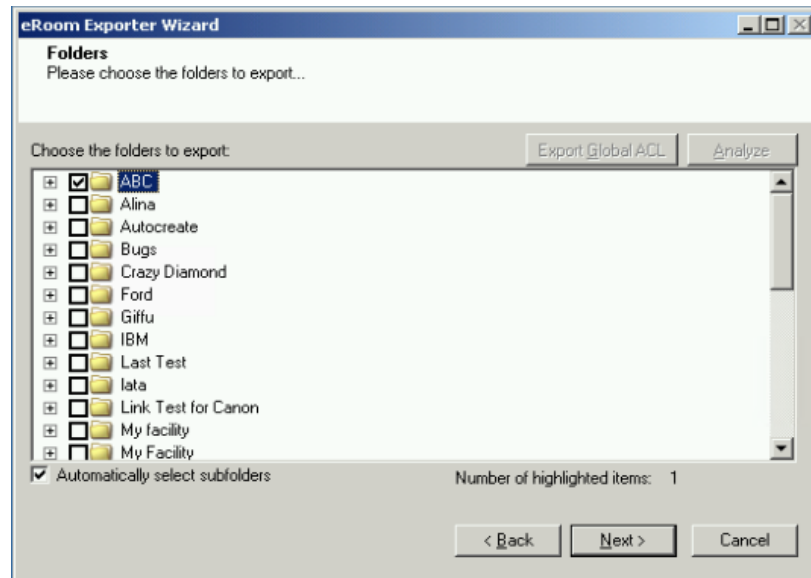


Figure 2-5: Folders Selection Screen



You can select all subfolders of a selected folder by checking '**Automatically select subfolders**'.

7. Click **Next**. The Filter screen appears.

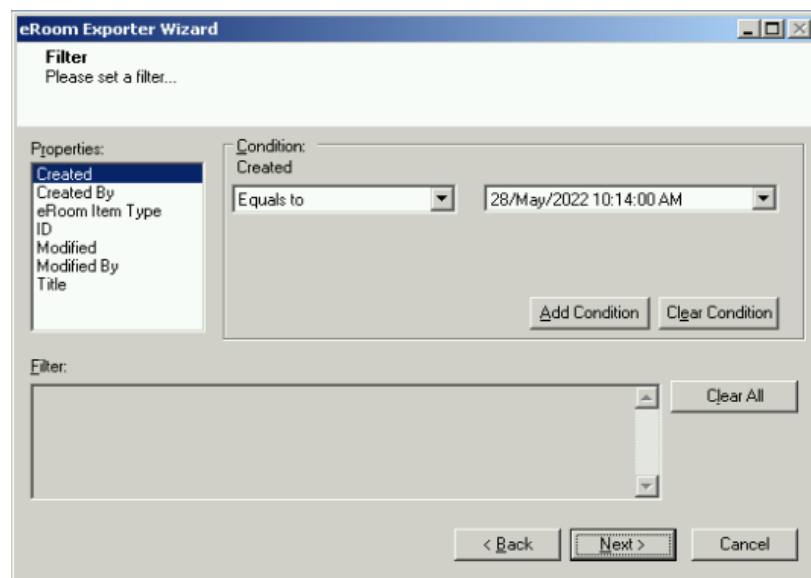


Figure 2-6: Filter Screen

8. Set up filtering as follows:

- a) In the Properties field, select a property.
- b) In the Condition field, select a condition from the dropdown list and enter or select values in the corresponding field.

- c) Click **Add Condition**. The condition is added to the Filter area, displaying the full filter expression.



You can only add one condition per property.

You can edit a condition for a property by selecting the property and modifying the condition type or values that are currently assigned to it.

You can remove a condition from a property or all the conditions from all the properties by clicking **Clear Condition** or **Clear All**, respectively.

This option works only for Data Items.

If multiple conditions are applied, only items that match all conditions are exported.

9. Click **Next**. The Destination Folder screen appears.

Figure 2-7: Destination Folder Screen

Specify where to export the files and generated TDX information. Make sure you are saving to a folder with a descriptive name and under a well-organized file system hierarchy. It is recommended to export to a folder that is as close to the root as possible.



When exporting deep hierarchy, the property which store the path for exported folder/files may exceed the maximum character supported by the property (typically 260 characters defined in the Windows API). To overcome such condition, it is recommended to export to a folder that is as close to the root as possible.

Starting in Windows 10, version 1607, MAX_PATH limitations have been removed from common Win32 file and directory functions. Please, refer information published by Microsoft from following link and consult with your system administrator to remove the limitation whenever possible.

<https://docs.microsoft.com/en-us/windows/win32/fileio/maximum-file-path->

[limitation?tabs=registry](#)

Click **Save** under **Export specification file** for saving export specification details as an XML file which can be used to run the exporter in command-line mode. See the section '**Command-line Export**' below for more details.

10. Click **Next**.



If the export folder already exists, a warning appears, informing you that the destination folder already exists and if you continue all existing information will be deleted.

Clicking **OK** confirms overwrite and clicking **Cancel** returns you to the Destination Folder screen to change the destination folder.

An Exporting screen appears with a progress bar and execution report, and the export process begins. During the export process, a **Pause** button is displayed. Users can manually pause and resume the export process (despite of scheduled pause/resume time) by clicking on **Pause/Resume** button.

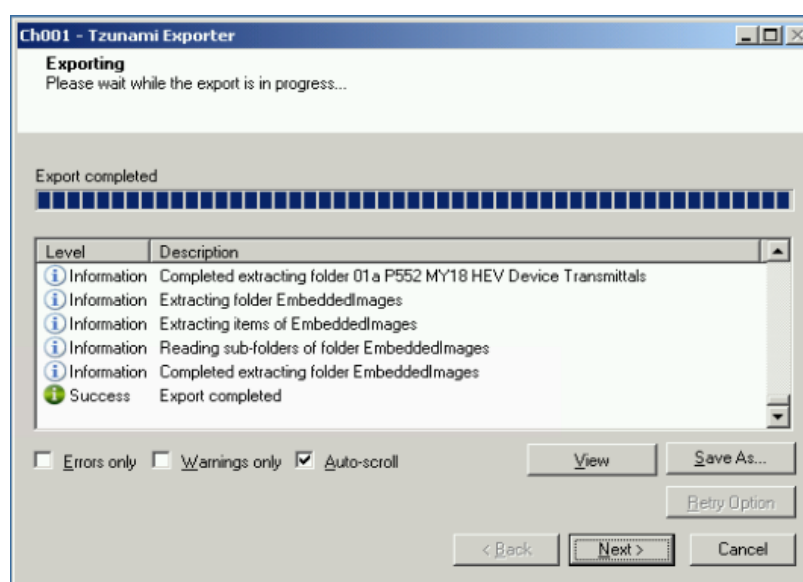


Figure 2-8: Exporter Progress Screen



You can save the export report by clicking **Save As...** after the export is complete.

You can check **Auto-scroll** to display the latest progress messages, as they appear.

You can display only export errors by checking **Errors only**.

You can display only export warnings by checking **Warnings only**.

11. Click **Retry Option**, if there are failed item(s).

12. Click **Next**. The Export Complete screen appears.

13. Click **Done**. The Tzunami eRoom Export wizard is closed.

If the exporter was run from Tsunami Deployer, after the extraction process completes successfully, you are prompted to load the exported data into the current Tsunami Deployer project. Clicking 'Yes' begins the process of loading the content from the previously exported TDX file into the project. For more information about loading sources, refer to the [Tsunami Deployer User Guide](#).

2.3 COMMAND-LINE EXPORT

Tsunami Exporter for eRoom provides ability to run export sessions non-interactively using command line instructions. This allows administrators to plan and schedule long running migration jobs through scripts, batch files and schedulers according to needs and organizational timetables. To run the exporter in batch mode you will need exporter specification file explained in the 'Choose Destination Folder' step of the export wizard. The file contains all the export option details including:

- Source ECM connectivity information (Server Address, User Name, Password etc.)
- Items to export
- Destination and Log Folder
- Filter
- Exporter specific options

This file can be edited to suit your needs however the XML schema of the file should not be altered. It is recommended that you generate a sample specifications file in the Destination Folder Screen selection step of the export wizard and use it as a template to create your own specification file.

Once the specification file is ready, you can run the exporter from command line using command:

TsunamiExporter.exe [-r <ResultFile>] -s <ExportSpecificationsFile>

Usage

| Field | Description |
|-------|--|
| -r | Outputs export results into an XML file [Optional] |
| -s | XML file containing export specifications |

For example:

```
C:\User\Administrator> "C:\Program Files (x86)\Tsunami\Deployer 4.0\Exporters\eRoom  
\TsunamiExporter.exe" -s "D:\Spec Files\specs1.xml"
```

```
C:\Program Files (x86)\Tsunami\Deployer 4.0\Exporters\eRoom> TsunamiExporter.exe -s  
"D:\Spec Files\specs1.xml"
```

Based on your needs you can create number of specification files and use them to run multiple export sessions as batch commands.



You will need to provide absolute path for **TsunamiExporter.exe** and **ExportSpecificationsFile** in the command if you are not running from the exporter installation directory.

In Microsoft Windows Server 2000/2003, if USG (Universal Security Group) is enabled, Users with low privileges sometimes cannot export ECM contents. To export contents using command line, User must run with elevated or administrative privileges.

To export contents with elevated or administrative privileges, you can run the exporter from command line using command:

```
RUNAS /trustlevel:"Unrestricted" "<ExporterInstallationDirectory>\TsunamiExporter.exe"  
-s "<Spec file path>\Specfilename.xml"
```

For example:

```
RUNAS /trustlevel:"Unrestricted" "C:\Program Files (x86)\Tsunami\Deployer  
4.0\Exporters\eRoom\TsunamiExporter.exe" -s "D:\Spec Files\specs1.xml"
```

2.4 LOGGING SETTINGS

In Tsunami Exporter, log is written in a persistent medium having as much information as possible about events that occur while the software runs. That information plays a vital role while diagnosing if any issue occurs during the export process. Hence, it is worth mentioning that logger writes each and every details during.

Tsunami Inc provides the settings for writing logs. There are the following log levels that the user can change before running the tool.

1. Go to installation directory of the exporter and open **TsunamiExporter.exe.config** file in an editor.
2. Locate the key and set corresponding values as mentioned below:
 - **LogLevel:** Set the esteem to "Debug" or "High" or "Normal" or "low" or "none".

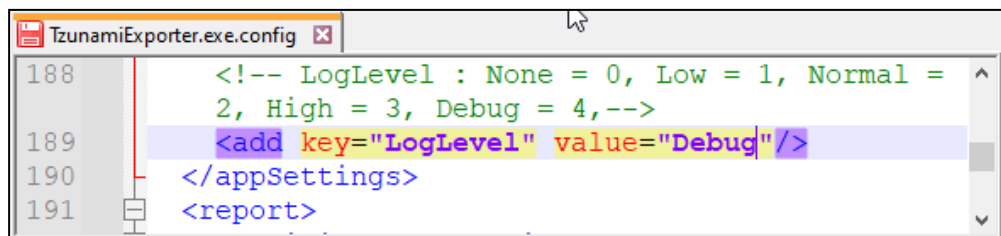


Figure 2-9 Log level Settings

- **Debug:** Writes logs as much as possible. So, this setting includes the maximum level of verbosity. By default, the tool is packaged with this setting.

- **High:** Writes logs as much as possible for warnings and errors. However, it will not log possible diagnostic information.
- **Normal:** Writes logs for anticipated errors and warnings.
- **Low:** Critical errors are logged. There will be as low as possible information logged.
- **None:** No such logs are written.

3. Save the file. Then run the exporter.

2.5 BEST PRACTICE

Due to the technological differences between and SharePoint, the following best practices should be taken into consideration:

- Follow the guidelines below when choosing the target structure.

Table 2-5: Target Structure Guidelines

| eRoom Item Type | Relevant SharePoint Types |
|-----------------|---|
| Facilities | <ul style="list-style-type: none"> • Web Application • Site Collection |
| Room | <ul style="list-style-type: none"> • Site Collection • Site |
| Discussion | Discussion Board |
| Poll | Survey |
| Calendar | Calendar List |
| Project Plan | Task List |
| Inbox | Custom List |
| Database | <ul style="list-style-type: none"> • For the basic database templates, some SharePoint lists • Generic List |
| Folders | Depending on the content of the folder, valid options may include migrating as Lists, Folders, or even Sites |
| Documents | Files in a Document Library |
| Notes | Items in a Generic List |
| Links | Items in a Links List |

- When migrating Polls as Surveys, each question is represented as a property. You can add the various questions as part of the deployment process. For more information about adding properties and using the Rule Engine, refer to the **Tsunami Deployer Administrators' Guide**.
- Top-level folders should be deployed as Sites and Sub-sites, in order to better organize the content in a SharePoint-oriented structure. The items of these folders can be divided between the lists in the sites.

- For folders that contain several types of items, Tsunami recommends filtering the folders based on the `eRoom Item Type` property and migrating each type of item to a different list. For more information about filters, refer to the **Tsunami Deployer Administrators' Guide**.

3 COPYRIGHT AND TRADEMARK

© Copyright 2024. Tsunami Inc. All rights reserved.

All intellectual property rights in this publication are owned by Tsunami, Inc. and protected by United States copyright laws, other applicable copyright laws and international treaty provisions. Tsunami, Inc. retains all rights not expressly granted. No part of this publication may be reproduced in any form whatsoever or used to make any derivative work without prior written approval by Tsunami, Inc.

No representation of warranties for fitness for any purpose other than what is specifically stated in this guide is made either by Tsunami, Inc. or by its agents.

Tsunami, Inc. reserves the right to revise this publication, and/or make improvements or changes in the product(s) and/or the program(s) described in this documentation at any time without prior notice.

Any software on removable media described in this publication is furnished under a license agreement included with the product as a separate document. If you are unable to locate a copy, please contact Tsunami, Inc. and a copy will be forwarded to you.

Tsunami is either a registered trademark or a trademark of Tsunami, Inc. in the United States and/or other countries.

All other brand or product names are trademarks or registered trademarks of their respective companies.

For further information, you can contact Tsunami Inc. at:

Tsunami Inc.

601 108th Avenue, NE

Suite 1900

Bellevue, WA 98004, USA

Email: sales@tsunami.com, support@tsunami.com

Web: <http://www.tsunami.com>