



Tsunami Deployer

FileNet Exporter Guide

Supports extraction of FileNet contents and migrate to Microsoft SharePoint using Tsunami Deployer.

Version 4.0
Last Updated: April 30, 2024

Table of Content

PREFACE	IV
INTENDED AUDIENCE.....	IV
CONVENTIONS	IV
TECHNICAL SUPPORT.....	V
COMMENTS AND SUGGESTIONS	V
1 INSTALLING TZUNAMI FILENET EXPORTER	1-1
1.1 SYSTEM REQUIREMENTS.....	1-2
1.2 PERMISSION REQUIREMENTS.....	1-2
1.2.1 Connecting FileNet Server.....	1-2
1.3 INSTALLING TZUNAMI FILENET EXPORTER	1-3
1.4 CONFIGURATION OF TZUNAMI SERVICE SETTINGS.....	1-5
1.5 UNINSTALL TZUNAMI FILENET EXPORTER	1-6
1.5.1 Uninstallation using Installer	1-7
1.5.2 Uninstallation using Control Panel.....	1-7
2 TZUNAMI FILENET EXPORTER.....	2-8
2.1 OVERVIEW	2-9
2.1.1 Supported Types	2-9
2.1.2 Security	2-9
2.2 EXPORTING FROM FILENET	2-10
2.3 COMMAND-LINE EXPORT.....	2-18
2.4 LOGGING SETTINGS.....	2-19
2.5 BEST PRACTICES.....	2-20
3 COPYRIGHT AND TRADEMARK.....	21

List of Tables

Table 1-1: System Requirements	1-2
Table 2-1: FileNet Configurations Screen, Connection Tab – Description of Fields	2-11
Table 2-2: FileNet Configurations, General Tab – Description of Fields	2-12
Table 2-3: FileNet Configurations, Actions Tab - Description of fields	2-13
Table 2-4 Analyzer Information Description	2-14
Table 2-5: Target Structure Guidelines	2-20

List of Figures

Figure 1-1: Welcome Window	1-3
Figure 1-2: End-User License Agreement Window	1-3
Figure 1-3: Custom Setup Window	1-4
Figure 1-4: Installing Tsunami FileNet Exporter Window	1-4
Figure 1-5: Installation Complete Window	1-5
Figure 1-6 Deployer Settings Manager	Error! Bookmark not defined.
Figure 2-1: Connection Screen	2-10
Figure 2-2: FileNet Configurations Screen – General Tab	2-11
Figure 2-3: FileNet Configurations Screen – Actions Tab	2-12
Figure 2-4 Analyze Option	2-13
Figure 2-5 Analyzer Information	2-14
Figure 2-6 Folder Selection Screen	2-14
Figure 2-7: Filter Screen	2-15
Figure 2-8: Destination Folder Screen	2-16
Figure 2-9: Exporter Progress Screen	2-17
Figure 2-15 Log level Settings	2-19

PREFACE

This guide provides installation procedures for Tsunami FileNet Exporter and detail steps to extract contents from FileNet using Tsunami FileNet Exporter. The guide also describes how to extract content non-interactive way using command-line instructions and best practice.

This preface contains the following topics.

- *Intended Audience*
- *Conventions*
- *Technical Support*
- *Comments and Suggestions*

INTENDED AUDIENCE

Tsunami FileNet Exporter Guide is intended for:

- System Administrators who are responsible for exporting FileNet contents and setting migration environment using Tsunami Deployer.
- Project Managers and IT Managers who create and regulate usage of Tsunami Deployer and Tsunami FileNet Exporter.

CONVENTIONS

The following text conventions are used in this document:

- Commands and keywords are given in **boldface**.
- Terminal sessions, console screens, or system file names are displayed in `fixed width fonts`.



Caution indicates that the described action might result in program malfunction or data loss.



Notes contain helpful suggestions about or references to materials not contained in this manual.



Tips provide information that might help you solve a problem.

TECHNICAL SUPPORT

Before contacting the Tsunami Support team, ensure that you are referencing the latest copy of this user guide (Ctrl+Click to follow link) [Tsunami Deployer FileNet Exporter Guide](#).

For additional information, please contact Tsunami Support Team at support@tsunami.com

COMMENTS AND SUGGESTIONS

Your feedback is important to us and will help us to provide the most accurate and high quality information possible in our documentation. Send us comments or suggestions by email to support@tsunami.com. Be sure to include as much of the following as possible:

- The document title.
- The location that the document was accessed from (either downloaded from the Tsunami web site or the Tsunami Deployer User Guide and Tsunami FileNet Exporter Guide available in Tsunami Deployer).
- The section or chapter number and the original text found in the document.



When you send information to Tsunami Support Team, you grant Tsunami a right to use or distribute the information internally within Tsunami Development and Support team for diagnostic purpose.

1 INSTALLING TZUNAMI FILENET EXPORTER

This chapter contains information about installing Tzunami FileNet Exporter. It contains the following topics:

- *System Requirements*
- *Permission Requirements*
- *Installing Tzunami FileNet Exporter*
- *Uninstall Tzunami FileNet Exporter*

1.1 SYSTEM REQUIREMENTS

The following table lists the system requirements for Tsunami Deployer FileNet.

Table 1-1: System Requirements

Components	Minimum Requirements
Computer and processor	2GHz Pentium processor or equivalent
Memory	2 GB (Minimum); 4GB (Recommended)
Hard disk	50Mb (additional space will be required for the Tsunami Deployer projects, which may vary from 10 Mb to 4 GB).
Supported Operating System	Windows Server 2000/2003/2008/2012, Windows XP, Windows Vista, Windows 7, Windows 8 & Windows 10.
Supported Architectures	x86 and x64
Network	Intranet/Internet access depending on connectivity requirements
Display	800 x 600, 256 colors (minimum); 1024 x 768 high color, 32-bit (recommended)
Microsoft .NET Framework	Microsoft .Net Framework 3.5

1.2 PERMISSION REQUIREMENTS

1.2.1 Connecting FileNet Server

For connecting to FileNet server using Tsunami FileNet Exporter, User must be a member of FileNet Server and have at least read permission on folders, items etc.

1.3 INSTALLING TZUNAMI FILENET EXPORTER

You can install Tzunami FileNet Exporter on any machine from which you can connect to FileNet Application Server.

To install Tzunami FileNet Exporter:

1. Unzip the zip file, and run TzunamiFileNetExporter.msi. The Tzunami FileNet Exporter setup wizard will launch. To advance through the install wizard, click **Next** at the bottom of the window.

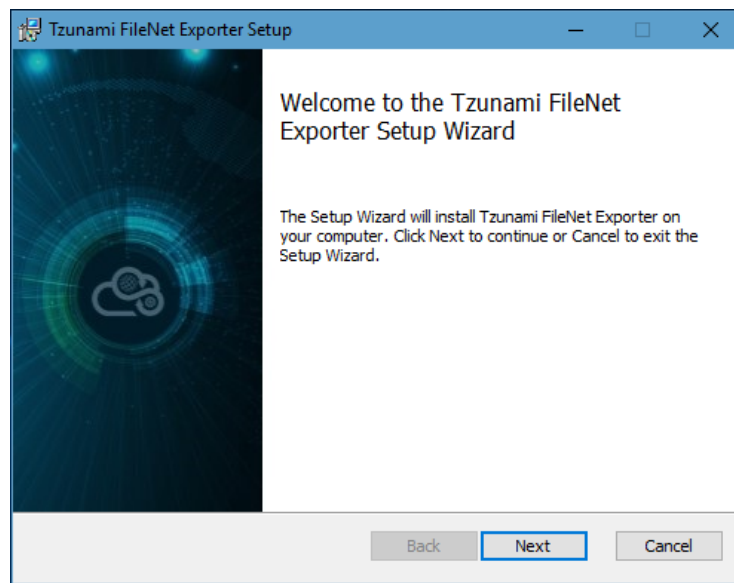


Figure 1-1: Welcome Window

2. In the End-User Licensing Agreement panel, click "**I accept the terms in the License Agreement**" and click **Next** to continue installation.

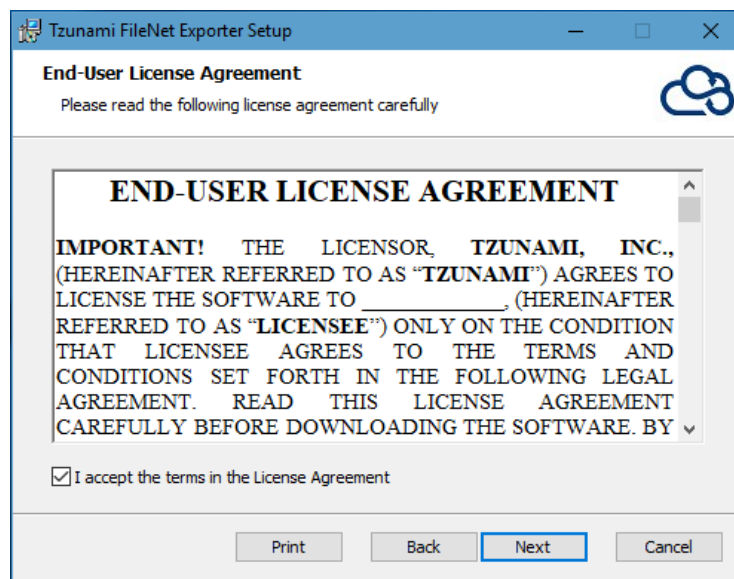


Figure 1-2: End-User License Agreement Window



You are advised to read the terms of the license carefully before proceeding with the installation. If you decline the license terms, the installation will not proceed.

3. In the Custom Setup panel, do one of the following:
 - To accept the default Destination Folder, click **Next**.
 - Click **Browse**, locate and select a destination folder, click **OK**, and then click **Next**.

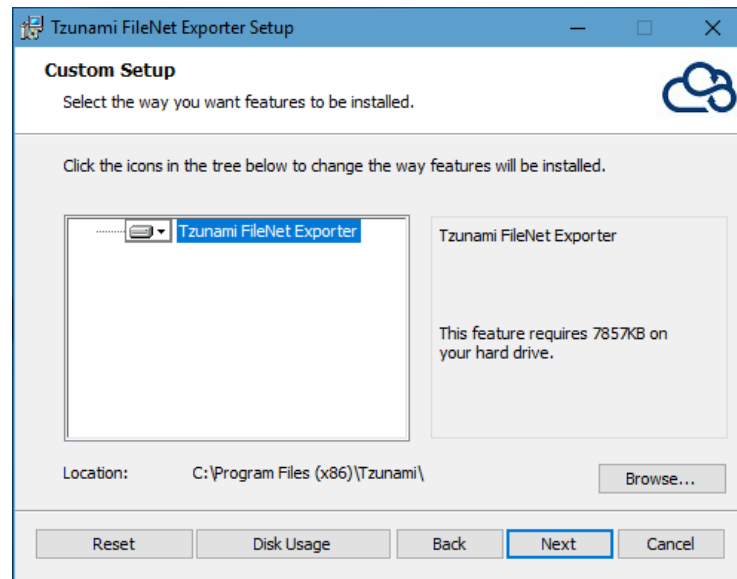


Figure 1-3: Custom Setup Window

4. In the Ready to install Tzunami FileNet Exporter panel, click **Install**. FileNet Exporter is installed.

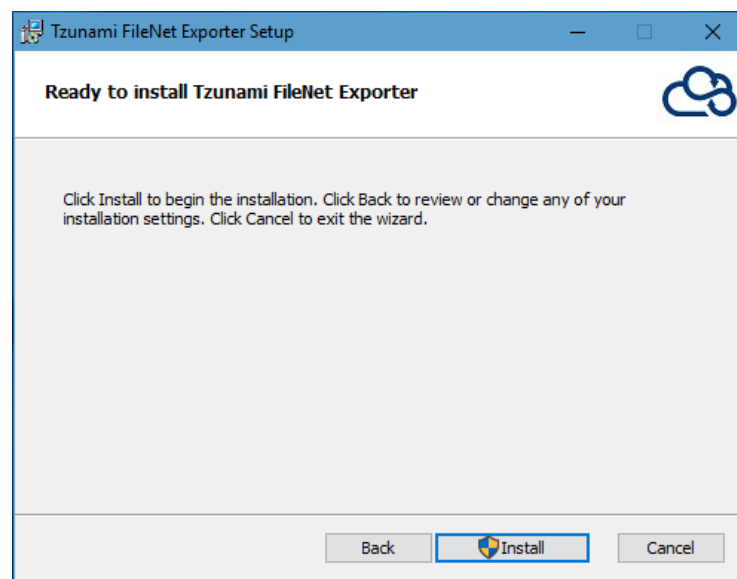


Figure 1-4: Installing Tzunami FileNet Exporter Window

5. Click **Finish** to exit from the setup wizard.

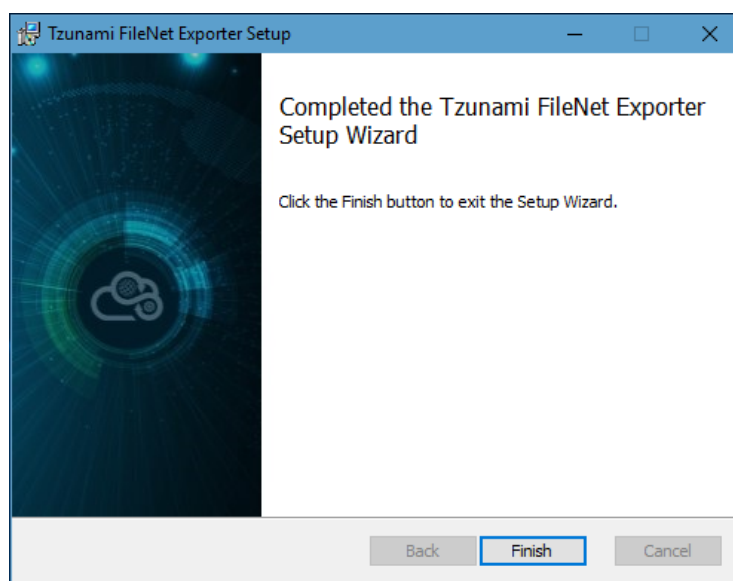


Figure 1-5: Installation Complete Window



When Tzunami FileNet Exporter is installed, it comes with a default license that can be used for evaluation purpose only. This license is limited in time and the number of operations.

1.4 CONFIGURATION OF TZUNAMI SERVICE SETTINGS

1. When installing **Tzunami Deployer/Exporter/Remote Service** for the first time, a **Tzunami Service Settings** dialog is displayed. In **Tzunami Service Settings**, the Licensing Service, Link Resolver Service and O365 AD Service are pointed to localhost (same machine) and port.

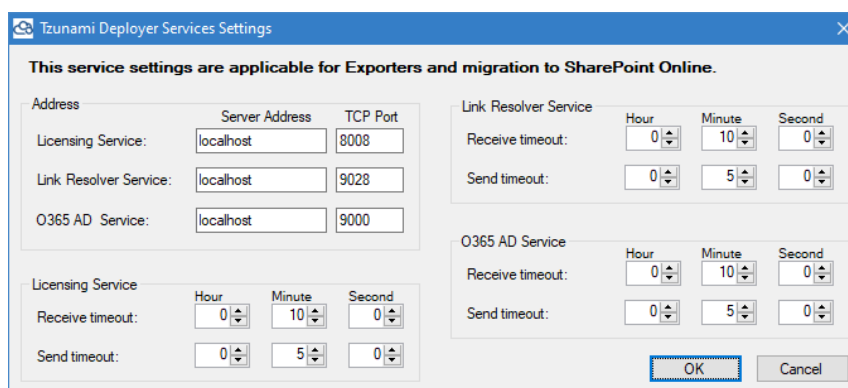


Figure 1-6 Deployer Settings Manager



User can run the **Settings Manager.exe** application from the installation directory to display this service settings dialog at any time and updated the settings to point the Tzunami services as required.

If these services are installed on another machine, point to that machine with machine name or IP Address and port.

Licensing Service: TCP port 8008 (or the port that the Licensing Service is listening on)

Link Resolver Service: TCP port 9028 (or the port that the Link Resolver Service is listening on)

O365 AD Service: TCP port 9000 (or the port that the O365 AD Service is listening on).

2. Click on **OK**.

1.5 UNINSTALL TZUNAMI FILENET EXPORTER

This section of the guide illustrates different ways to remove or uninstall Tzunami FileNet Exporter. Here are the two different ways to uninstall Tzunami FileNet Exporters:

- Uninstallation using Installer
- Uninstallation using Control Panel

To uninstall Tzunami FileNet Exporter, user needs to be a Local Administrator in the FileNet Exporter installed machine. Uninstalling Tzunami FileNet Exporter is simple and easy. You can remove or uninstall it in no time. You don't need to reboot your computer once the uninstalling process is complete.



Log files, licensing information files etc. will remain after uninstalling Tzunami FileNet Exporter. You can manually delete those files from your computer if needed. By default logs are located at the "C:\Program Files\Tsunami\Deployer 4.0\Exporter\Logs", or where Tzunami FileNet Exporter is installed. Tzunami FileNet Exporter Options information will be available in "C:\Documents and Settings\All users\Application Data\Local\Tsunami" location.

1.5.1 Uninstallation using Installer

To uninstall Tzunami FileNet Exporter using Installer

1. Close **Tzunami FileNet Exporter**.
2. Unzip the zip file, and run `TzunamiFileNetExporter.msi`. The Tzunami FileNet setup wizard (Welcome window) will launch. To advance through the remove installation wizard, click “**Next**” at the bottom of the screen.
3. In the Change, repair or remove installation panel, click “**Remove**” button to proceed to remove Tzunami FileNet Exporter from your computer.
4. In the Ready to remove Tzunami FileNet Exporter panel, click “**Remove**” to remove Tzunami FileNet Exporter from your computer.
5. Click **Finish** to exit the setup wizard.



You can right-click Tzunami FileNet Exporter setup (`TzunamiFileNetExporter.msi`) file and select **Uninstall** to remove or uninstall Tzunami FileNet Exporter from your computer.

1.5.2 Uninstallation using Control Panel

To uninstall Tzunami FileNet Exporter using Control Panel

1. Close **Tzunami FileNet Exporter**.
2. Click **Start > Control Panel > Add or Remove Programs**.
3. In Add or Remove Programs window, right-click the Tzunami FileNet Exporter application you want to remove, and then click **Uninstall**.

2 TZUNAMI FILENET EXPORTER

This chapter contains information of Tzunami FileNet Exporter. It contains the following topics:

- *Overview*
- *Exporting from FileNet*
- *Command-line Export*
- *Logging settings*
- *Best Practice*

2.1 OVERVIEW

Tsunami FileNet Exporter enables organizations to migrate content from FileNet to SharePoint 2007, SharePoint 2010, SharePoint 2013, SharePoint 2016 and SharePoint Online using Tsunami Deployer. Tsunami FileNet Exporter is easy-to-use and convenient way to extract the contents from FileNet server and load contents into Tsunami Deployer.

To load FileNet content into Tsunami Deployer, you must first extract the content, using Tsunami FileNet Exporter, into TDX (Tsunami Deployer Export) and STDX (Separate Tsunami Deployer Export) files. You can then load this TDX file into a Tsunami Deployer project.



When working with Tsunami Deployer on several machines, you can run, an export on one machine and load the exported data on another.

Tsunami FileNet Exporter is an extension module of Tsunami Deployer. You can work with this module independent of Tsunami Deployer, or from within the Deployer.

2.1.1 Supported Types

The Tsunami FileNet Exporter supports extraction of basically five categories of contents from FileNet Server:

- Folders
- Documents
- Comments
- Compound Documents
- Link to document
- Notes

2.1.2 Security

In addition to the structure and items, Tsunami FileNet Exporter extracts security information. The following permissions are used in the exporter:

- Owner
- Author
- Reader
- No Access

Each item is assigned an ACL defining the permissions of the various members according to the roles they were assigned.



The exporter automatically creates four default roles that are used during the deployment process. The roles include No Access (No Permission), Reader (Read ACL, Read, View Content), Author (Link, Read ACL, Create Instance, Read, Write, View Content, Change State), and Owner (Archive, Deployer, Create Child, Delete, Write Owner, Create Instance, Write, Read, Read ACL, Link, Unlink, Write ACL, Major Version, Publish, Minor Version, Change State, View Content).

2.2 EXPORTING FROM FILENET

The Tsunami FileNet Exporter enables you to export FileNet contents to a TDX file. It has a simple user interface and lets you quickly extract contents such as folders, files, link to document, comments, etc.



When exporting, keep the following in mind:

Export in small chunks: When exporting from your source system, perform the export in small chunks of about 40K-50K files each that have a common business logic or some other logic.

Ensure consistency: Make sure that the content of the different exports does not overlap and that, while exporting, no changes are made to the source data.

To export to a TDX file:

1. In Tsunami Deployer, right-click on the FileNet tab source store area and select **Export FileNet to TDX**.

Or

Click **Start > All Programs > Tsunami > Tsunami FileNet Exporter**

The Welcome screen of the Export Wizard appears.

2. Click **Next**. The FileNet Configurations screen appears with two tabs: Connection and General.


a. Connection

The **Connection** tab allows you to enter the information required for connecting to the FileNet Server.

The screenshot shows the 'FileNet Exporter Wizard' window with the 'FileNet Configurations' tab selected. The 'Connection' sub-tab is active, showing fields for 'Server Address', 'Username', 'Password', 'Object Store', and 'Server Time Zone'. The 'Server Address' field contains 'http://filenet:9080/wsi/FNCEWS40MTOM'. The 'Username' field contains 'fnadmin'. The 'Password' field is masked with asterisks. The 'Object Store' dropdown is set to 'OBS'. The 'Server Time Zone' dropdown is set to '(UTC+05:45) Kathmandu'. There is a 'Remember' checkbox checked next to the password field and a 'Refresh' button next to the 'Object Store' dropdown. At the bottom, there are '< Back', 'Next >', and 'Cancel' buttons. The 'Next >' button is highlighted with a blue border.

Figure 2-1: Connection Screen

Table 2-1: FileNet Configurations Screen, Connection Tab – Description of Fields

Field	Description
Connection settings	
Server Address	Enter the URL of the FileNet Server. For example, http://filenetserver:9080/wsi/FNCEWS40MTOM
Username	Enter the username to use when connecting to FileNet Server.  User must be a member of FileNet Server.
Password	Enter the password of the user.
Remember	Check this option if you wish to save FileNet password.
Object Store	Select the Object Store to connect to. The user supplied above must be a member of this domain. Click Refresh Domain to view the list of available Object Store configured in the FileNet server.
Refresh	Click this button to refresh the window so that Object Store is populated for valid connection.
Server Time Zone	Select the time zone of server.

b. General tab

The **General** tab allows you to select the item types that you wish to export from FileNet server. Select the item types listed in this section.

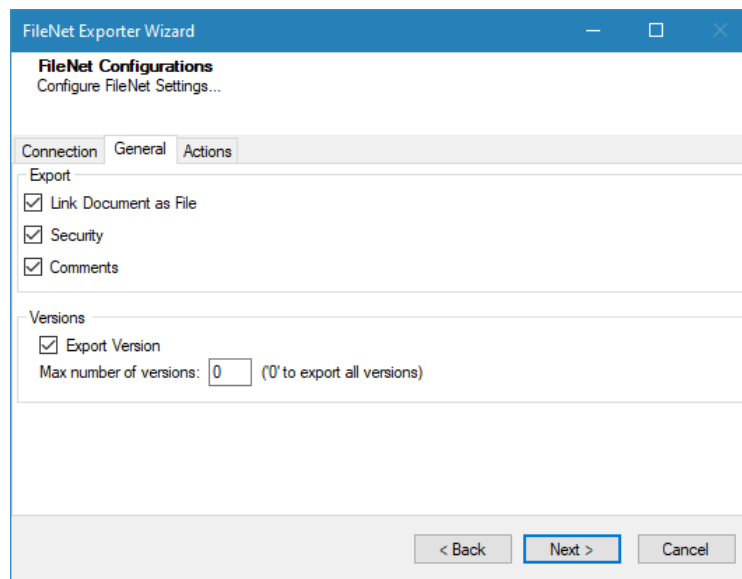




Figure 2-2: FileNet Configurations Screen – General Tab

Table 2-2: FileNet Configurations, General Tab – Description of Fields

Field	Description
Export	
Link Document as File	Check this option if you wish to export Link document as File.
Security	Check this option if you wish to export security details of the various items.
Comments	Check this option if you wish to export comments.
Versions	
Export Version	Check this option if you wish to export all versions of items.  Uncheck this option, if you wish to export current versions of each item.
Max number of versions	Enter the number of versions you would like to export for each item.  Setting this value to zero will export all versions. If number of maximum versions is specified, number of versions from latest version are exported.

c. Actions tab

The **Actions** tab allows you to use different actions that can be taken in the exporter.

- **Auto Pause:** The export process is paused and resumed using this functionality at a set time each day. The feature can be turned on or off using the **Use Auto Pause** check box. The feature can be checked by the user, who can also select the pause and resume times. The user can deselect it to turn off the feature.

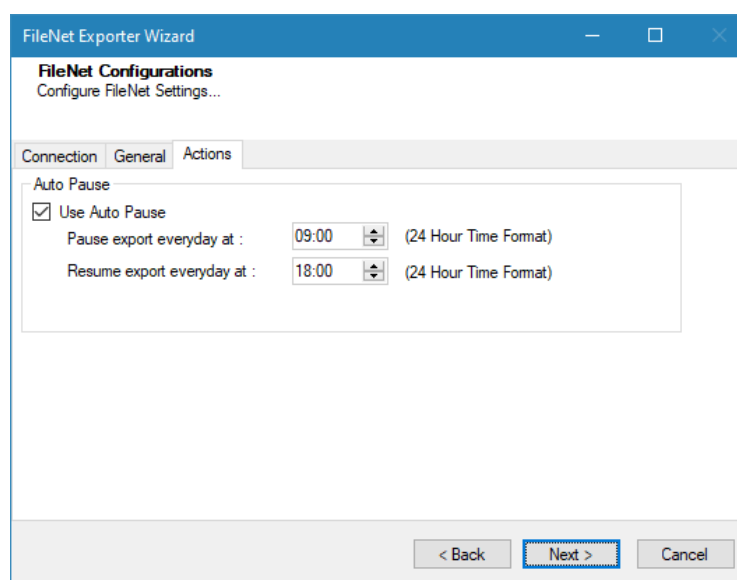


Figure 2-3: FileNet Configurations Screen – Actions Tab

Table 2-3: FileNet Configurations, Actions Tab - Description of fields

Field	Description
Auto Pause	
Use Auto Pause	To use the auto-pause and resume feature, select this option. To turn off this function, uncheck this box.
Pause export every day at	Set the daily time that the export process should pause.
Resume export every day at	Set the daily time for restarting the interrupted export operation.

The settings for actions are only applied to this exporter instance that is currently executing when the user clicks the **Next** button.

3. Click **Next**. The Folders screen appears.

Tsunami Exporter provides quick analysis option before exporting to know the size, count of contents inside selected folder.

If you want to analyze the content: Check on the Folder(s) in tree view, then **Analyze** button is enabled. Click **Analyze**.

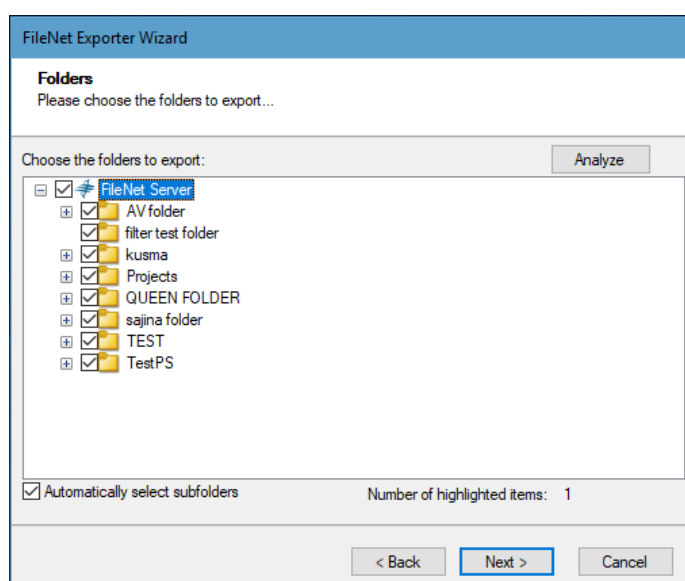


Figure 2-4 Analyze Option

Analyzer screen appears. Analyzer screen provides the detail information that helps to plan for the export (chunk size) based on File size and number of items.

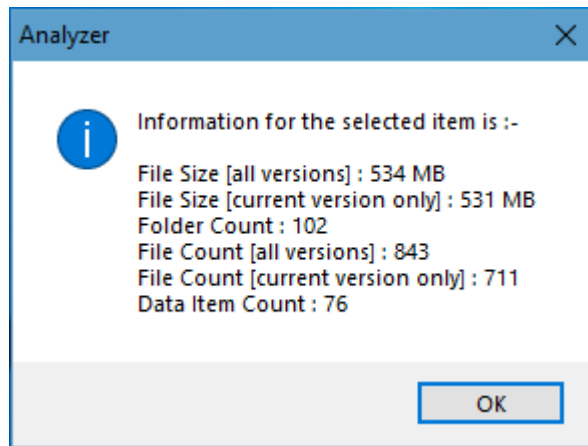


Figure 2-5 Analyzer Information

Table 2-4 Analyzer Information Description

Field	Description
File Size [all versions]	Provides the total size of files for all versions of documents.
File Size [current version only]	Provides the total size of files for current version of documents.
Folder Count	Provides the number of folders.
File Count [all versions]	Provides the total number of files for all versions of documents.
File Count [current version only]	Provides the total number of files for current versions of documents.
Data Item Count	Provides the total number of data item.

4. Select the folders to export.

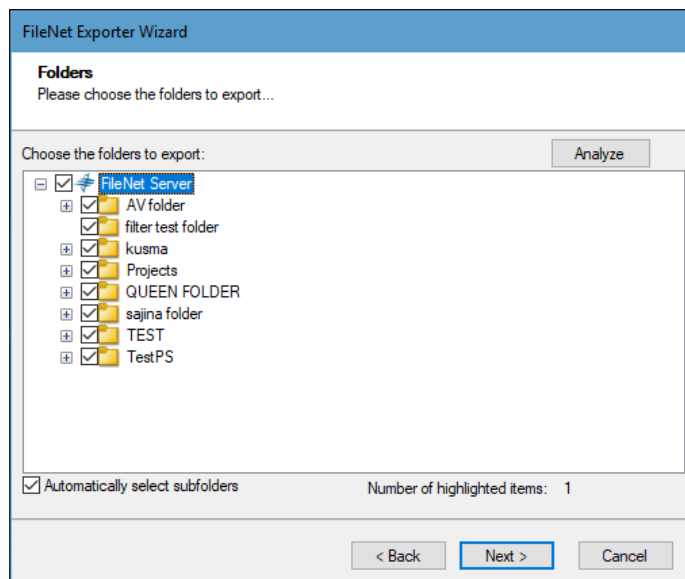


Figure 2-6 Folder Selection Screen



You can select all subfolders of a selected folder by checking Automatically select subfolders.

5. Click **Next**. The Filter screen appears.

Figure 2-7: Filter Screen

6. Set up filtering as follows:
 - a) In the Properties field, select a property.
 - b) In the Condition field, select a condition from the drop down list and enter or select values in the corresponding field.
 - c) Click **Add Condition**. The condition is added to the Filter area, displaying the full filter expression.



You can only add one condition per property.

You can edit a condition of a property by selecting the property and modifying the condition type or values that are currently assigned to it.

You can remove a condition of a property or all the conditions from all the properties by clicking Clear Condition or Clear All, respectively.

If multiple conditions are applied, only items that match all conditions are exported.

7. Click **Next**. The Destination Folder screen appears.

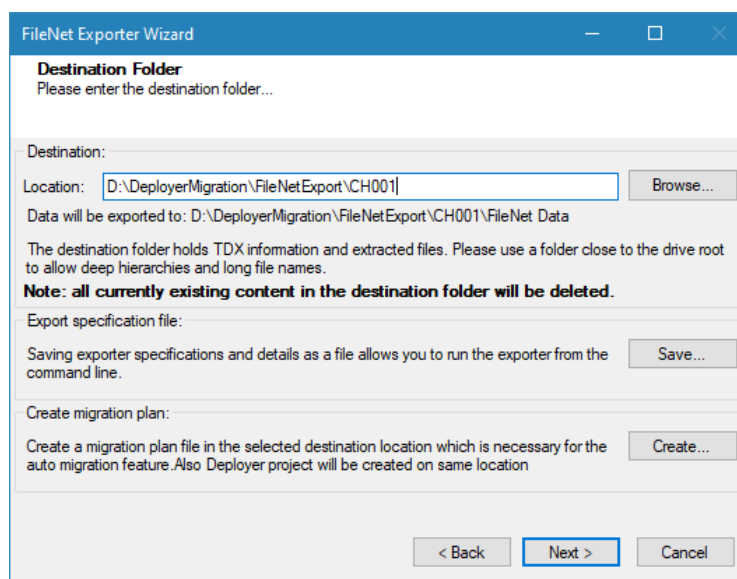


Figure 2-8: Destination Folder Screen

Specify where to export the files and generated TDX information. Make sure you are saving to a folder with a descriptive name and under a well-organized file system hierarchy. It is recommended to export to a folder that is as close to the root drive as possible.



When exporting deep hierarchy, the property which store the path for exported folder/files may exceed the maximum character supported by the property (typically 260 characters defined in the Windows API). To overcome such condition, it is recommended to export to a folder that is as close to the root as possible.

Starting in Windows 10, version 1607, MAX_PATH limitations have been removed from common Win32 file and directory functions. Please, refer information published by Microsoft from following link and consult with your system administrator to remove the limitation whenever possible.

<https://docs.microsoft.com/en-us/windows/win32/fileio/maximum-file-path-limitation?tabs=registry>

Click **Save** under **Export specification file** for saving export specification details (as an XML file) which can be used to run the exporter in command-line mode. See the section '**Command-line Export**' below for more details.

8. Click **Next**.



If the export folder already exists, a warning appears, informing you that the destination folder already exists and if you continue all existing information will be deleted.

Clicking **OK** confirms overwrite and clicking **Cancel** returns you to the Destination Folder screen to change the destination folder.

An Exporting screen appears with a progress bar and execution report, and the export process begins. During the export process, a **Pause** button is displayed. Users

can manually pause and resume the export process (despite of scheduled pause/resume time) by clicking on **Pause/Resume** button.

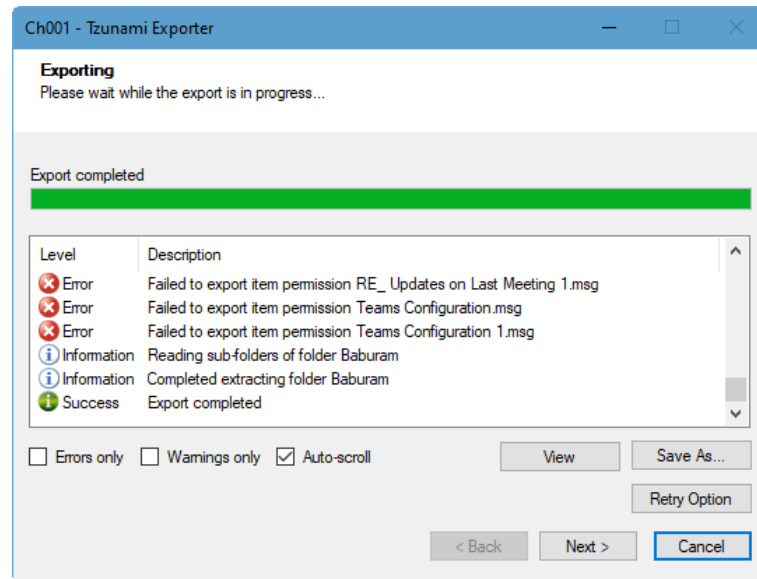


Figure 2-9: Exporter Progress Screen



You can save the export report by clicking **Save As** after the export is complete.

You can check **Auto-scroll** to display the latest progress messages, as they appear

You can display only export errors by checking **Errors only**.

You can display only export warnings by checking **Warnings only**.

9. Click **Retry Option**, if there are failed item(s).
10. Click **Next**. The Export Complete screen appears.
11. Click **Done**. The Tsunami FileNet Export wizard is closed.

After the extraction process completes successfully, you are prompted to load the exported data into the current Tsunami Deployer project. Clicking '**Yes**' begins the process of loading the content of the previously exported TDX file into the project. For more information about loading sources, refer to the [Tsunami Deployer User Guide](#).

2.3 COMMAND-LINE EXPORT

Tsunami Exporter for FileNet provides the ability to run export sessions non-interactively using command line instructions. This allows administrators to plan and schedule long running migration jobs through scripts, batch files and schedulers according to needs and organizational timetables. To run the exporter in batch mode, you will need an exporter specification file explained in the 'Choose Destination Folder' step of the export wizard. The file contains all the export option details including:

- Source ECM connectivity information (Server Address, User Name, Password etc.)
- Items to export
- Destination and Log Folder
- Filter
- Exporter specific options

This file can be edited to suit your needs however the XML schema of the file should not be altered. It is recommended that you generate a sample specification file in the **Destination Folder Screen** selection step of the export wizard and use it as a template to create your own specification file.

Once the specification file is ready, you can run the exporter from command line using the command:

Usage

Field	Description
-r	Outputs export results into an XML file [Optional]
-s	XML file containing export specifications

For example:

```
C:\User\Administrator> "C:\Program Files (x86)\Tsunami\Deployer  
4.0\Exporters\FileNet\TsunamiExporter.exe" -s "D:\Spec Files\specs1.xml"
```

```
C:\Program Files (x86)\Tsunami\Deployer 4.0\Exporters\FileNet> TsunamiExporter.exe -s  
"D:\Spec Files\specs1.xml"
```

Based on your needs, you can create a number of specification files and use them to run multiple export sessions as batch commands.



You will need to provide an absolute path for **TsunamiExporter.exe** and **ExportSpecificationsFile** in the command if you are not running the command from the exporter installation directory.

In Microsoft Windows 8, Windows 7, Windows Vista and Windows Server 2003/2008/2012 environment, if UAC (User Access Control) is enabled, Users with low privileges sometimes cannot export ECM contents. To export contents using command line, User must run with elevated or administrative privileges.

To export contents with elevated or administrative privileges, you can run the exporter from command line using the command:

```
RUNAS /trustlevel:"Unrestricted" "<ExporterInstallationDirectory>\TsunamiExporter.exe"  
-s "<Spec file path>\Specfilename.xml "
```

For example:

```
RUNAS /trustlevel:"Unrestricted" "C:\Program Files (x86)\Tsunami\Deployer  
4.0\Exporters\FileNet\TsunamiExporter.exe" -s "D:\Spec Files\specs1.xml"
```

2.4 LOGGING SETTINGS

In Tsunami Exporter, log is written in a persistent medium having as much information as possible about events that occur while the software runs. That information plays a vital role while diagnosing if any issue occurs during the export process. Hence, it is worth mentioning that logger writes each and every details during.

Tsunami Inc provides the settings for writing logs. There are the following log levels that the user can change before running the tool.

1. Go to installation directory of the exporter and open **TsunamiExporter.exe.config** file in an editor.
2. Locate the key and set corresponding values as mentioned below:
 - **LogLevel:** Set the esteem to "Debug" or "High" or "Normal" or "low" or "none".

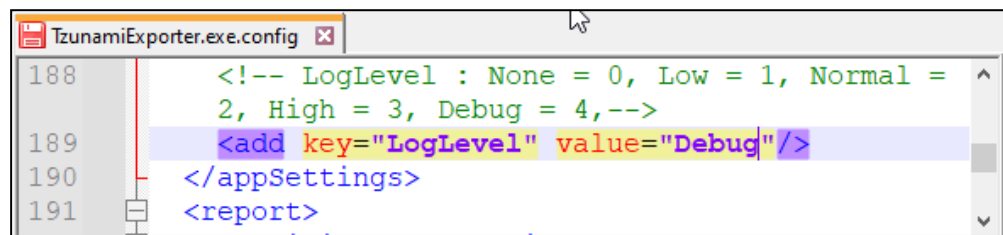


Figure 2-10 Log level Settings

- **Debug:** Writes logs as much as possible. So, this setting includes the maximum level of verbosity. By default, the tool is packaged with this setting.
- **High:** Writes logs as much as possible for warnings and errors. However, it will not log possible diagnostic information.
- **Normal:** Writes logs for anticipated errors and warnings.
- **Low:** Critical errors are logged. There will be as low as possible information logged.

- **None:** No such logs are written.

3. Save the file. Then run the exporter.

2.5 BEST PRACTICES

Due to the technological differences between FileNet and SharePoint, the following best practices should be taken into consideration:

- Migrate folders to their relative list types, based on the items in those folders:

Table 2-5: Target Structure Guidelines

FileNet Item Type	Relevant SharePoint Types
Folders	Folders /Document Library
Files	Document
Comments	Document Comment Property
Compound Documents	Document Library/Folder
Links	Links
Notes	Custom List

3 COPYRIGHT AND TRADEMARK

© Copyright 2024. Tzunami Inc. All rights reserved.

All intellectual property rights in this publication are owned by Tzunami, Inc. and protected by United States copyright laws, other applicable copyright laws and international treaty provisions. Tzunami, Inc. retains all rights not expressly granted. No part of this publication may be reproduced in any form whatsoever or used to make any derivative work without prior written approval by Tzunami, Inc.

No representation of warranties for fitness for any purpose other than what is specifically stated in this guide is made either by Tzunami, Inc. or by its agents.

Tzunami, Inc. reserves the right to revise this publication, and/or make improvements or changes in the product(s) and/or the program(s) described in this documentation at any time without prior notice.

Any software on removable media described in this publication is furnished under a license agreement included with the product as a separate document. If you are unable to locate a copy, please contact Tzunami, Inc. and a copy will be forwarded to you.

Tzunami is either a registered trademark or a trademark of Tzunami, Inc. in the United States and/or other countries.

All other brand or product names are trademarks or registered trademarks of their respective companies.

For further information, you can contact Tzunami Inc. at:

Tzunami Inc.

601 108th Avenue, NE

Suite 1900

Bellevue, WA 98004, USA

Email: sales@tzunami.com, support@tzunami.com

Web: <http://www.tzunami.com>