



Tsunami Deployer

Documentum Cloud Exporter Guide

Supports migration of EMC Documentum Cloud content repositories into Microsoft SharePoint using Tsunami Deployer

Version 4.0

Last Updated: April 29, 2024

Table of Contents

PREFACE	IV
INTENDED AUDIENCE.....	IV
CONVENTIONS	IV
TECHNICAL SUPPORT.....	V
COMMENTS AND SUGGESTIONS	V
1 INSTALLING TZUNAMI DOCUMENTUM CLOUD EXPORTER	1-1
1.1 SYSTEM REQUIREMENTS.....	1-2
1.2 PERMISSION REQUIREMENTS.....	1-2
1.2.1 Connecting Documentum Cloud Server.....	1-2
1.3 INSTALLING TZUNAMI DOCUMENTUM CLOUD EXPORTER	1-3
1.4 CONFIGURATION OF TZUNAMI SERVICE SETTINGS.....	1-5
1.5 UNINSTALL TZUNAMI DOCUMENTUM CLOUD EXPORTER	1-6
1.5.1 Uninstallation using Installer	1-6
1.5.2 Uninstallation using Control Panel.....	1-7
2 TZUNAMI DOCUMENTUM CLOUD EXPORTER	2-8
2.1 OVERVIEW.....	2-9
2.1.1 Supported Types	2-9
2.1.2 Security	2-9
2.2 EXPORTING FROM DOCUMENTUM CLOUD	2-2
2.3 COMMAND-LINE EXPORT.....	2-12
2.4 LOGGING SETTINGS.....	2-13
2.5 BEST PRACTICE	2-14
3 ANNEX	3-15
3.1 ADD CUSTOM FILTER PROPERTIES IN TZUNAMI DOCUMENTUM CLOUD EXPORTER	3-15
4 COPYRIGHT AND TRADEMARK.....	4-17

List of Tables

Table 1-1: System Requirements	1-2
Table 2-1: Documentum Cloud Exporter, Welcome screen - Description of fields	2-3
Table 2-2: Documentum Cloud Configurations Screen – Description of Fields	2-3
Table 2-3: Documentum Cloud Configurations Screen, General Tab – Description of Fields	2-4
Table 2-4: Documentum Cloud Configurations Screen, Advanced Tab – Description of Fields	2-5
Table 2-5: Documentum Cloud Configurations, Actions Tab - Description of fields	2-6
Table 2-6 Analyzer Information Description	2-7
Table 2-7: Target Structure Guidelines	2-14

List of Figures

Figure 1-1: Welcome Window	1-3
Figure 1-2: End-User License Agreement Window	1-3
Figure 1-3: Custom Setup Window	1-4
Figure 1-4: Installing Tsunami Documentum Cloud Exporter Window	1-4
Figure 1-5: Installation Complete Window	1-5
Figure 1-6 Deployer Settings Manager	1-5
Figure 2-1: Documentum Cloud Exporter Wizard.....	2-2
Figure 2-2: Documentum Cloud Configurations Screen – Credentials Tab	2-3
Figure 2-3: Documentum Cloud Configurations Screen – General Tab	2-4
Figure 2-4: Documentum Cloud Configurations Screen – Advanced Tab.....	2-5
Figure 2-5: Documentum Cloud Configurations Screen – Actions Tab.....	2-6
Figure 2-6 Analyze Option.....	2-7
Figure 2-7 Analyzer Information	2-7
Figure 2-8 Folders Selection Screen.....	2-8
Figure 2-9: Filter Screen	2-8
Figure 2-10 Multiple Filter Properties with AND Condition.....	2-9
Figure 2-11 Multiple Filter Properties with OR Condition	2-10
Figure 2-12: Destination Folder Screen	2-10
Figure 2-13: Exporter Progress Screen.....	2-11
Figure 2-14 Log level Settings	2-13
Figure 3-1 Custom Filter Property Settings.....	3-15
Figure 3-2 Custom Property in TDX file.....	3-16
Figure 3-3 Custom Property in Filter Screen.....	3-16

PREFACE

This guide provides installation procedures for Tsunami Documentum Cloud Exporter and detail steps to extract contents from Documentum Cloud using Tsunami Documentum Cloud Exporter. The guide also describes how to extract contents non-interactive way using command-line instructions and best practice.

This preface contains the following topics.

- Intended Audience
- Conventions
- Technical Support
- Comments and Suggestions

INTENDED AUDIENCE

Tsunami Documentum Cloud Exporter Guide is intended for:

- System Administrators who are responsible for exporting Documentum Cloud contents and setting migration environment using Tsunami Deployer.
- Project Managers and IT Managers who create and regulate usage of Tsunami Deployer and Tsunami Documentum Cloud Exporter.

CONVENTIONS

The following text conventions are used in this document:

- Commands and keywords are given in **boldface**
- Terminal sessions, console screens, or system file names are displayed in fixed width fonts



Caution indicates that the described action might result in program malfunction or data loss.



Notes contain helpful suggestions about or references to materials not contained in this manual.



Tips provide information that might help you solve a problem.

TECHNICAL SUPPORT

Before contacting Tzunami Support Team, ensure that you are referencing the latest copy of this user guide (Ctrl+Click to follow link) [Tzunami Deployer Documentum Cloud Exporter Guide](#).

For additional information, please contact Tzunami Support Team at support@tzunami.com.

COMMENTS AND SUGGESTIONS

Your feedback is important to us and will help us to provide the most accurate and high quality information possible in our documentation. Send us comments or suggestions by email to support@tzunami.com. Be sure to include as much of the following as possible:

- The document title.
- The location that the document was accessed from (either downloaded from Tzunami web site or the Tzunami Deployer User Guide and Tzunami Documentum Cloud Exporter Guide available in Tzunami Deployer).
- The section or chapter number and the original text found in the document.



When you send information to Tzunami Support Team, you grant Tzunami a right to use or distribute the information internally within Tzunami Development and Support team for diagnostic purpose.

1 INSTALLING TZUNAMI DOCUMENTUM CLOUD EXPORTER

This chapter contains information about installing Tzunami Documentum Cloud Exporter. It contains the following topics:

System Requirements

Permission Requirements

Installing Tzunami Documentum CLOUD EXPORTER

Uninstall Tzunami Documentum Cloud Exporter

1.1 SYSTEM REQUIREMENTS

The following requirements must be met in order to use Tsunami Documentum Cloud Exporter:

Table 1-1: System Requirements

Components	Minimum Requirements
Computer and processor	2GHz Pentium processor or equivalent
Memory	2 GB (Minimum); 4GB (Recommended)
Hard disk	50Mb (additional space will be required for the Tsunami Deployer projects, which may vary from 10 Mb to 4 GB).
Supported Operating System	Windows Server 2003/2008/2012, Windows XP, Windows Vista, Windows 7, Windows 8 & Windows 10.
Supported Architectures	x86 and x64
Network	Intranet/Internet access depending on connectivity requirements
Display	800 x 600, 256 colors (minimum); 1024 x 768 high color, 32-bit (recommended)
Microsoft .NET Framework	Microsoft .Net Framework 4.5 or higher.

1.2 PERMISSION REQUIREMENTS

1.2.1 Connecting Documentum Cloud Server

For connecting to Documentum Cloud server using Tsunami Documentum Cloud Exporter, you need a user account with the following permissions in the Documentum Cloud Server:

- User account should have at least **None** Basic Privileges
- User account should have at least **Consumer** level Client Capability
- User account should have **Default Permission Set**.
- User must be member of Local Users and Groups in Documentum Cloud server.

1.3 INSTALLING TZUNAMI DOCUMENTUM CLOUD EXPORTER

Tsunami Documentum Cloud Exporter requires that the Documentum Foundation Classes (DFC) to be installed and configured on the machine where the exporter is running.

To install Tsunami Documentum Cloud Exporter:

1. Unzip the zip file, and run DocumentumCloudExporter.msi. The Tsunami Documentum Cloud Exporter setup wizard (Welcome window) will launch. To advance through the install wizard, click **Next**.

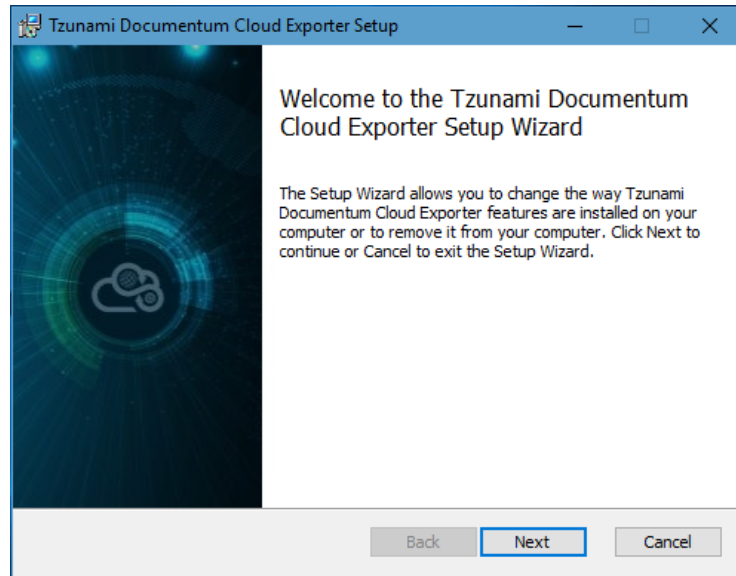


Figure 1-1: Welcome Window

2. In the End-User Licensing Agreement panel, click "**I accept the terms in the License Agreement**" and click **Next** to continue installation.

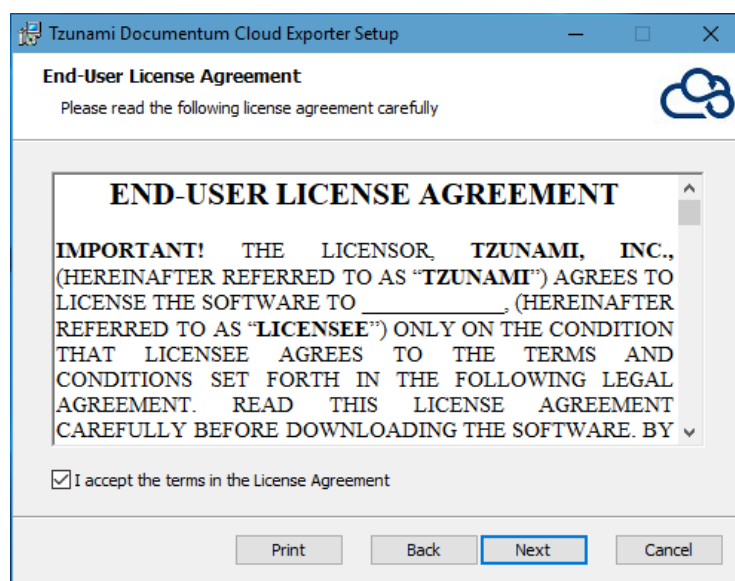


Figure 1-2: End-User License Agreement Window



You are advised to read the terms of the license carefully before proceeding with the installation. If you decline the license terms, the installation cannot proceed.

3. In the Custom Setup panel, do one of the following:
 - To accept the default Destination Folder, click **Next**.
 - Click **Browse**, locate and select a destination folder, click **OK**, and then click **Next**.

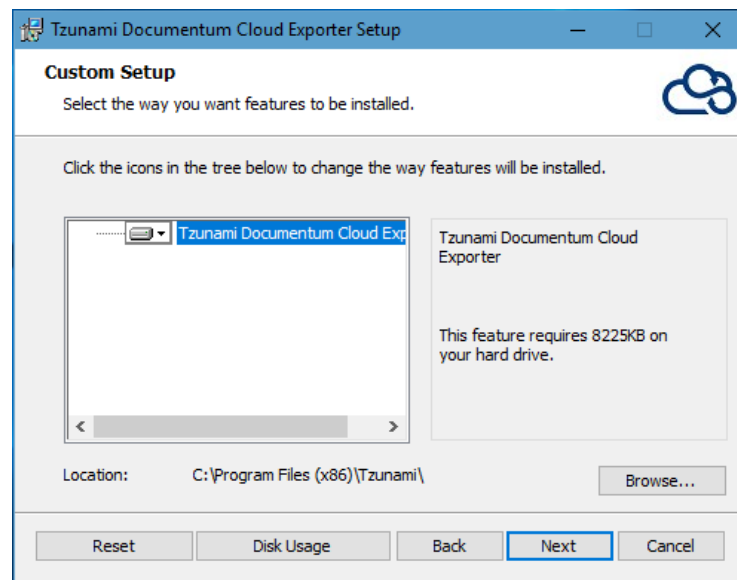


Figure 1-3: Custom Setup Window

4. In the Ready to install Tzunami Documentum Cloud Exporter panel, click **Install**.

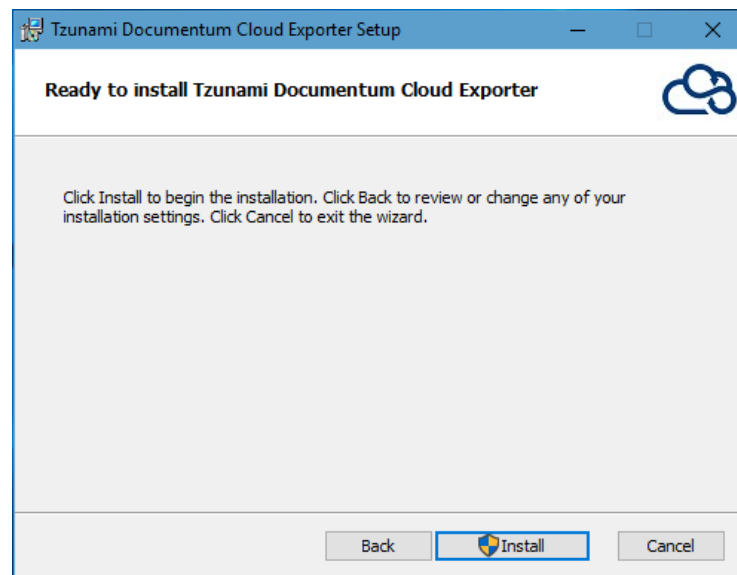


Figure 1-4: Installing Tzunami Documentum Cloud Exporter Window

5. In the Completed Tzunami Documentum Cloud Exporter Setup Wizard, to exit the wizard, click **Finish**.

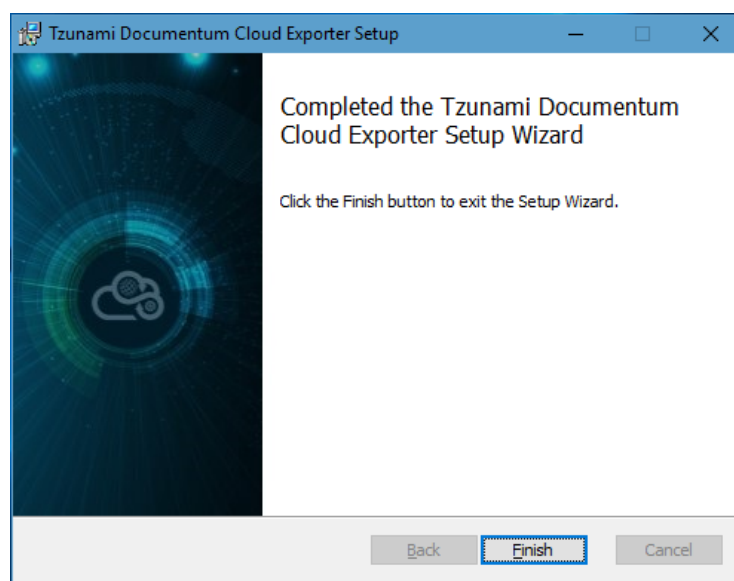


Figure 1-5: Installation Complete Window



When Tzunami Documentum Cloud Exporter is installed, it comes with a default license that can be used for evaluation purpose only. This license is limited in time and number of operations.

1.4 CONFIGURATION OF TZUNAMI SERVICE SETTINGS

1. When installing **Tzunami Deployer/Exporter/Remote Service** for the first time, a **Tzunami Service Settings** dialog is displayed. In **Tzunami Service Settings**, the Licensing Service, Link Resolver Service and O365 AD Service are pointed to localhost (same machine) and port.

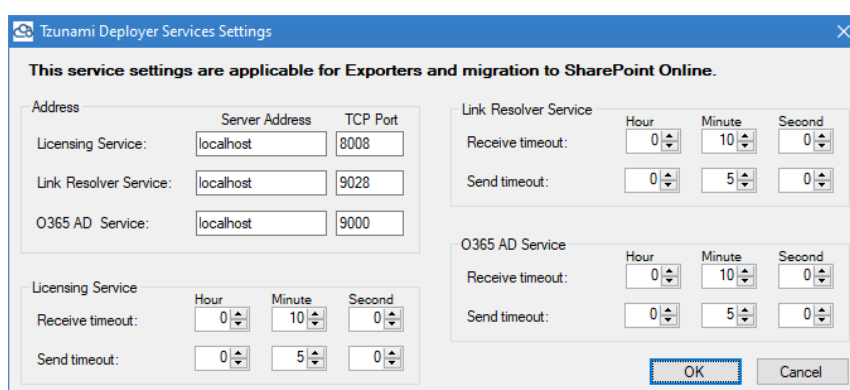


Figure 1-6 Deployer Settings Manager



User can run the **Settings Manager.exe** application from the installation directory to display this service settings dialog at any time and updated the settings to point the Tzunami services as required.

If these services are installed on another machine, point to that machine with machine name or IP Address and port.

Licensing Service: TCP port 8008 (or the port that the Licensing Service is listening on)

Link Resolver Service: TCP port 9028 (or the port that the Link Resolver Service is listening on)

O365 AD Service: TCP port 9000 (or the port that the O365 AD Service is listening on).

2. Click on **OK**.

1.5 UNINSTALL TZUNAMI DOCUMENTUM CLOUD EXPORTER

This section of the guide illustrates different ways to remove or uninstall Tsunami Documentum Cloud Exporter from your Documentum Cloud Server. Here are the two different ways to uninstall Tsunami Documentum Cloud Exporter:

- Uninstallation using Installer
- Uninstallation using Control Panel

To uninstall Tsunami Documentum Cloud Exporter, user needs to be a Local Administrator in the Documentum Cloud Exporter installed machine. Uninstalling Tsunami Documentum Cloud Exporter is simple and easy. You can remove or uninstall it in no time. You don't need to reboot your computer once the uninstalling process is complete.



Log files, licensing information files etc. will remain after uninstalling Tsunami Documentum Cloud Exporter. You can manually delete those files from your computer if needed. By default logs are located at the "C:\ Program Files (x86)\Tsunami\Deployer 4.0\Exporter\DocumentumCloud\Logs", or where Tsunami Documentum Cloud Exporter is installed. Tsunami Documentum Cloud Exporter Options information will be available in "C:\Documents and Settings\All users\Application Data\Local\Tsunami" location.

1.5.1 Uninstallation using Installer

To uninstall Tsunami Documentum Cloud Exporter using Installer

1. Close **Tsunami Documentum Cloud Exporter**.
2. Unzip the zip file, run TsunamiDocumentumCloudExporter.msi. The Tsunami Documentum Cloud setup wizard (Welcome window) will launch. To advance through the remove installation wizard, click "**Next**" at the bottom of the screen.
3. In the Change, repair or remove installation panel, click "**Remove**" button to proceed to remove Tsunami Documentum Cloud Exporter from your computer.
4. In the Ready to remove Tsunami Documentum Cloud Exporter panel, click "**Remove**" to remove Tsunami Documentum Cloud Exporter from your computer.
5. Click **Finish** to exit the setup wizard.



You can right-click Tzunami Documentum Cloud Exporter setup (TsunamiDocumentumCloudExporter.msi) file and select **Uninstall** to remove or uninstall Tzunami Documentum Cloud Exporter from your computer.

1.5.2 Uninstallation using Control Panel

To uninstall Tzunami Documentum Cloud Exporter using Control Panel

1. Close **Tzunami Documentum Cloud Exporter**.
2. Click **Start > Control Panel > Add or Remove Programs**.
3. In Add or Remove Programs window, right-click the Tzunami Documentum Cloud Exporter application you want to remove, and then click **Uninstall**.

2 TZUNAMI DOCUMENTUM CLOUD EXPORTER

This chapter contains information about Tsunami Documentum Cloud Exporter. It contains the following topics:

- *Overview*
- *Exporting from Documentum Cloud*
- *Command-line Export*
- *Logging settings*
- *Best Practice*

2.1 OVERVIEW

Tsunami Documentum Cloud Exporter enables migrating Documentum Cloud content into SharePoint 2007, SharePoint 2010, SharePoint 2013, SharePoint 2016, SharePoint 2019 and SharePoint Online using Tsunami Deployer.

To load Documentum Cloud content into Tsunami Deployer, you must first extract the content, using Tsunami Documentum Cloud Exporter, into TDX (Tsunami Deployer Export) and STDX (Separate Tsunami Deployer Export) files. You can then load this TDX file into a Deployer project.



When working with Tsunami Deployer on several machines, you can run an export on one machine and load the exported data on another.

Tsunami Documentum Cloud Exporter is distributed as an external tool from Tsunami Deployer.

2.1.1 Supported Types

The following items are exported from Documentum Cloud:

- Cabinets (General and Personal)
- Folders
- Documents (including custom types)
- Virtual Documents



Virtual Documents are converted to Folders.

2.1.2 Security

In addition to the structure and items, Tsunami Documentum Cloud Exporter extracts security information. The following permissions are used in the exporter:

- | | |
|-----------|---------------------|
| • Browse | • Change State |
| • Read | • Change Permission |
| • Relate | • Change Ownership |
| • Note | • Change Location |
| • Version | • Execute Procedure |
| • Write | • None |
| • Delete | |

Each item is assigned an ACL defining the permissions of the various members according to the roles they were assigned.



The exporter automatically creates four default roles that are used during the deployment process. The roles include Reader (Browse and Read permissions), Contributor (Browse, Read, Relate and Note permissions), Web Designer (Browse, Read, Relate, Note, Version, Write and Delete permissions), and Administrator (user has full permissions).

2.2 EXPORTING FROM DOCUMENTUM CLOUD

The Tsunami Documentum Cloud Exporter enables you to export Documentum Cloud content to a TDX file.



When exporting, keep the following in mind:

Export in small chunks: When exporting from your source system, perform the export in small chunks of about 40K-50K files each that have a common business logic or some other logic.

Ensure consistency: Make sure that the content of the different exports does not overlap and that, while exporting, no changes are made to the source data.

To export to a TDX file:

1. In Tsunami Deployer, **Right-Click** in the Documentum Cloud tab source store area and select **Export Documentum Cloud to TDX**.

Or

Click **Start > All Programs > Tsunami > Tsunami Documentum Cloud Exporter**

The Welcome screen of the Export Wizard appears.

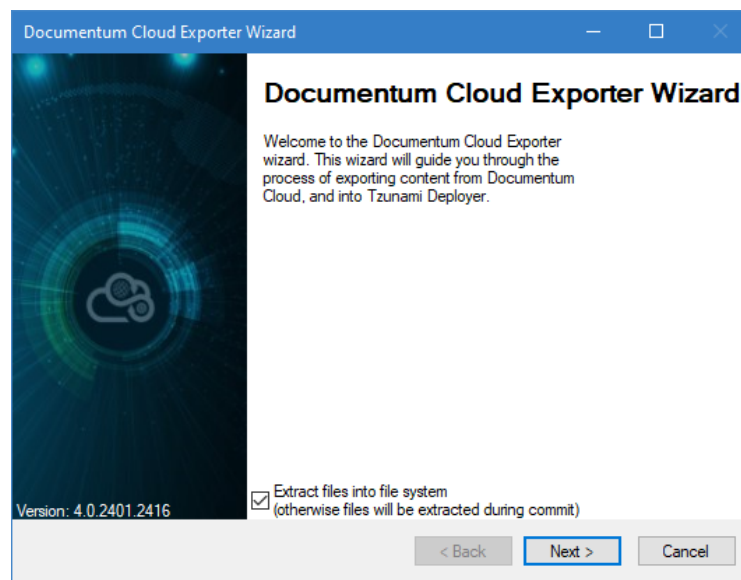


Figure 2-1: Documentum Cloud Exporter Wizard

Table 2-1: Documentum Cloud Exporter, Welcome screen - Description of fields

Fields	Description
Extract files into file system (otherwise files will be extracted during commit)	<p>Check this option if you wish to download the binary files from Documentum Cloud server to the file system and store them in the FileStore folder, in the same location as the TDX file.</p> <p>If this option is unchecked, no files are downloaded at the export stage. The files are only downloaded when they are needed, in the commit stage.</p>

2. Click **Next**. The Documentum Cloud Configurations screen appears with three tabs: Credentials, General, and Advanced.
3. Click the **Credentials** tab and enter the information required for the exporter to connect to Documentum Cloud.

Figure 2-2: Documentum Cloud Configurations Screen – Credentials Tab



Table 2-2: Documentum Cloud Configurations Screen – Description of Fields

Field	Description
Service Url	Enter the service url of the Documentum Cloud server.
Username	Enter the username to use when connecting to the Documentum Cloud repository.
Password	Enter the password to use when connecting to the Documentum Cloud repository.
Remember password	Check this option if you wish to save your password for next login
Repository	Select the repository to connect to in order to perform the export. Click Refresh to view the list of available repositories.

- Click the **General** tab and enter general export information.

Figure 2-3: Documentum Cloud Configurations Screen – General Tab

Table 2-3: Documentum Cloud Configurations Screen, General Tab – Description of Fields

Field	Description
Export security	Check this option if you wish to export the security permissions of items.
Export Virtual Documents	Check this option if you wish to export virtual documents. Exported virtual documents are converted to folders during the export process.
Export Renditions	Check this option if you wish to export renditions.
Export versions	Check this option if you wish to export all versions of documents.  If you do not check this option, only the latest version of each document is exported.
Export extended permissions set as separate role	Check this option if you wish to export each extended permissions set as separate role. This will maintain the granularity of permissions as available in the Documentum Cloud.  If you do not check this option, extended permissions are extracted without preserving granularity of combinations.
Skip Checked Out Items	Check this option if you wish to skip checked out items to export.
Skip Nested Groups or Subgroups	Check this option if you wish to skip nested groups or subgroups to export.
Links - Folders	A Documentum Cloud folder can be located in more than one folder, but SharePoint does not support this behavior. Specify whether to export such a folder only once (in the first parent it appears in), or to duplicate it in each location in which it appears.
Links	A Documentum Cloud item can be located in more than one folder, but SharePoint does not support this behavior. Specify whether to export such an item only once (in the first parent it appears in), or to duplicate it in each location in which it appears.

5. Click the **Advanced** tab to enter advanced export information.

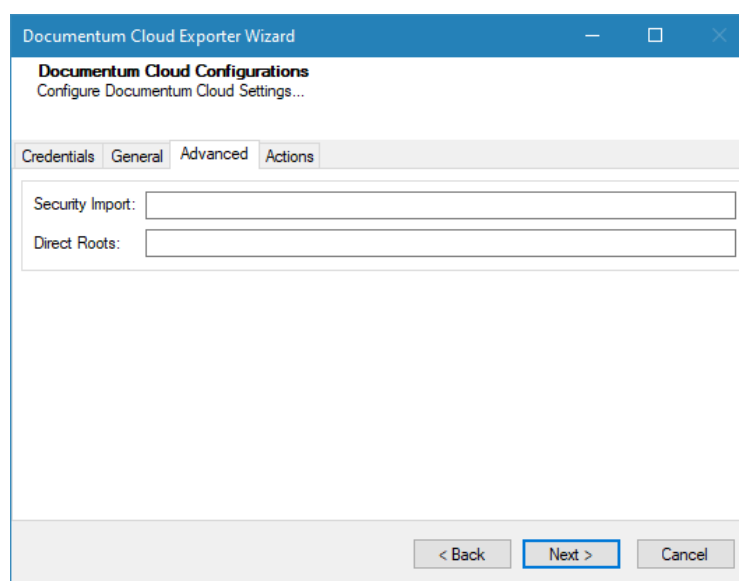



Figure 2-4: Documentum Cloud Configurations Screen – Advanced Tab

Table 2-4: Documentum Cloud Configurations Screen, Advanced Tab – Description of Fields

Field	Description
Security Import	<p>If you are performing multiple exports, it is more efficient to export security entities from another TDX file rather than from the Documentum Cloud server. Enter the full path of a TDX file from which to import security entities. Note that even if the TDX file you specify is missing some users or groups, they are exported as part of the regular export.</p> <p> Select “Export security” option in the General tab to import security from another TDX file.</p>
Direct Roots	<p>Enter the <code>r_object_id</code> of the required folder to be used as a root folder. Multiple entries are allowed, separated with semicolon (;) such as '0b000003800221ac;0b000003800221a6;0900000380004d2b'.</p>

6. Click on **Actions** tab.

The **Actions** tab allows you to use different actions that can be taken in the exporter.

- **Auto Pause:** The export process is paused and resumed using this functionality at a set time each day. The feature can be turned on or off using the **Use Auto Pause** check box. The feature can be checked by the user, who can also select the pause and resume times. The user can deselect it to turn off the feature.

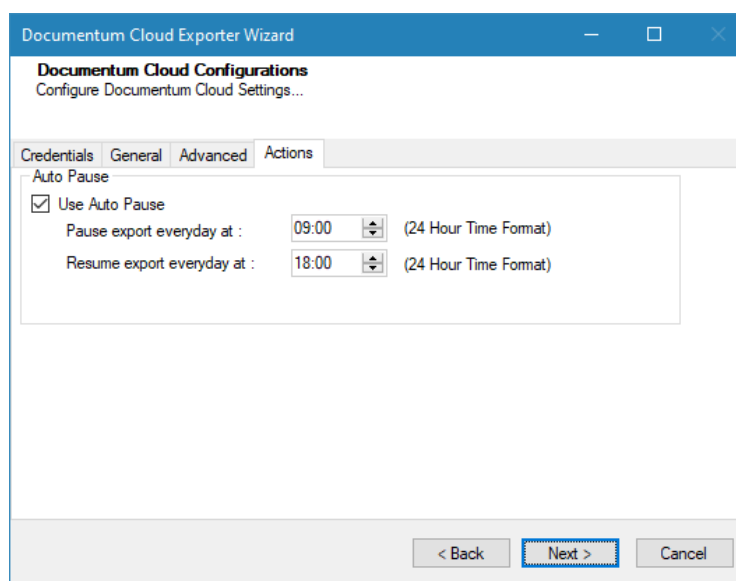


Figure 2-5: Documentum Cloud Configurations Screen – Actions Tab

Table 2-5: Documentum Cloud Configurations, Actions Tab - Description of fields

Field	Description
Auto Pause	
Use Auto Pause	To use the auto-pause and resume feature, select this option. To turn off this function, uncheck this box.
Pause export every day at	Set the daily time that the export process should pause.
Resume export every day at	Set the daily time for restarting the interrupted export operation.

The settings for actions are only applied to this exporter instance that is currently executing when the user clicks the **Next** button.

7. Click **Next**. The Folders screen appears.

Tsunami Exporter provides quick analysis option before exporting to know the size, count of contents inside selected folder.

If you want to analyze the content: Check on the Folder(s) in tree view, then **Analyze** button is enabled. Click **Analyze**.

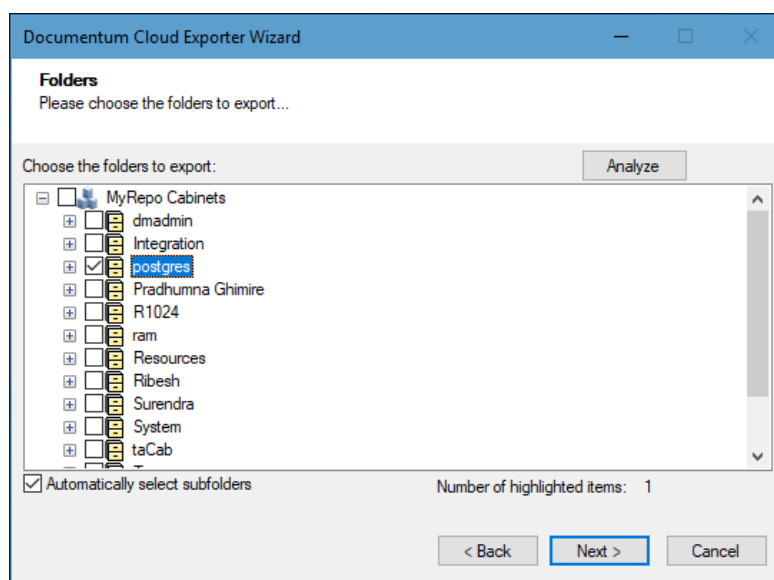


Figure 2-6 Analyze Option

Analyzer screen appears. Analyzer screen provides the detail information that helps to plan for the export (chunk size) based on File size and number of items.

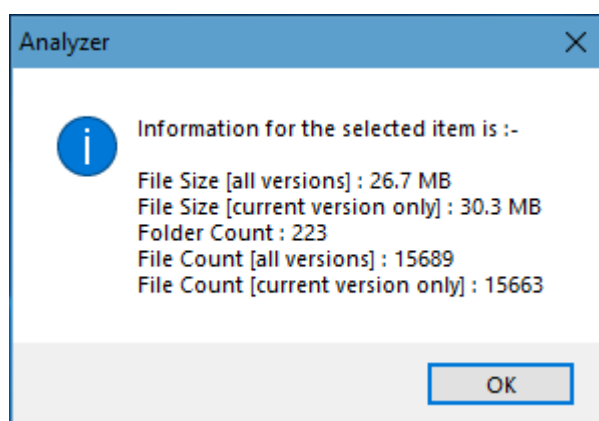


Figure 2-7 Analyzer Information

Table 2-6 Analyzer Information Description

Field	Description
File Size [all versions]	Provides the total size of files for all versions of documents.
File Size [current version only]	Provides the total size of files for current version of documents.
Folder Count	Provides the number of folders.

Field	Description
File Count [all versions]	Provides the total number of files for all versions of documents.
File Count [current version only]	Provides the total number of files for current versions of documents.

- Select folders to export.

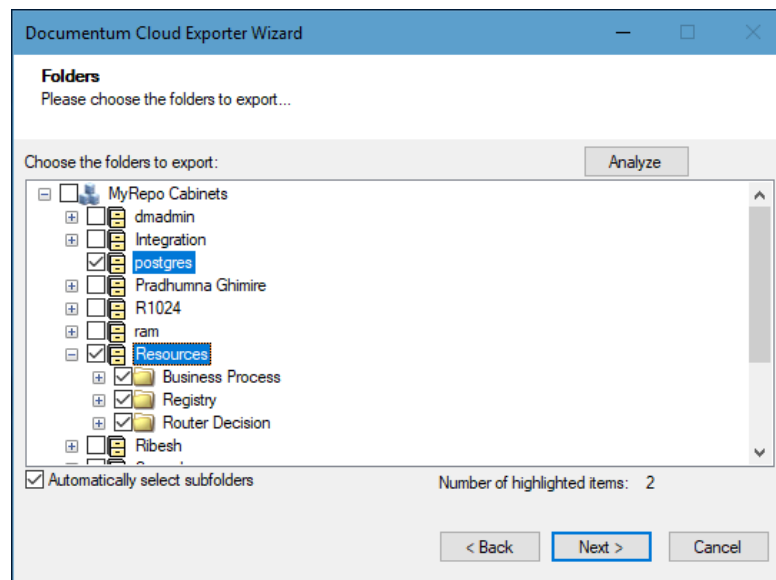


Figure 2-8 Folders Selection Screen



You can select all subfolders of a selected folder by checking Automatically select subfolders.

- Click **Next**. The Filter screen appears.

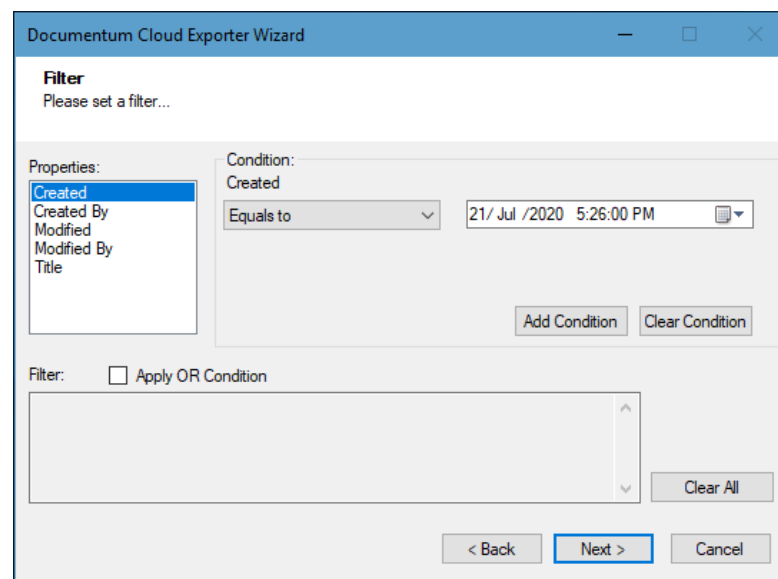


Figure 2-9: Filter Screen

- Set up filtering as follows:

- a. In the Properties field, select a property.
- b. In the Condition field, select a condition from the dropdown list and enter or select values in the corresponding field.
- c. Click **Add Condition**. The condition is added to the Filter area, displaying the full filter expression.



You can only add one condition per property.

You can edit a condition for a property by selecting the property and modifying the condition type or values that are currently assigned to it.

You can remove a condition from a property or all the conditions from all the properties by clicking **Clear Condition** or **Clear All**, respectively.

You must check/uncheck **Apply OR Condition** filter when multiple properties are used in filter at once.

If **Apply OR Condition** filter is unchecked, multiple properties are treated with 'AND' logic by default.

For example, if 'Created' and 'Object Type' properties are applied in filter with unchecked **Apply OR Condition** filter, the item(s) will be filtered based on the valid condition(s) from 'Created' and 'Object Type' properties.

Figure 2-10 Multiple Filter Properties with AND Condition

If **Apply OR Condition** filter is checked, multiple properties are treated with 'OR' logic.

For example, if 'Created' and 'Object Type' properties are applied in filter with checked **Apply OR Condition** filter, the item(s) will be filtered based on the valid condition(s) from 'Created' or 'Object Type' properties.

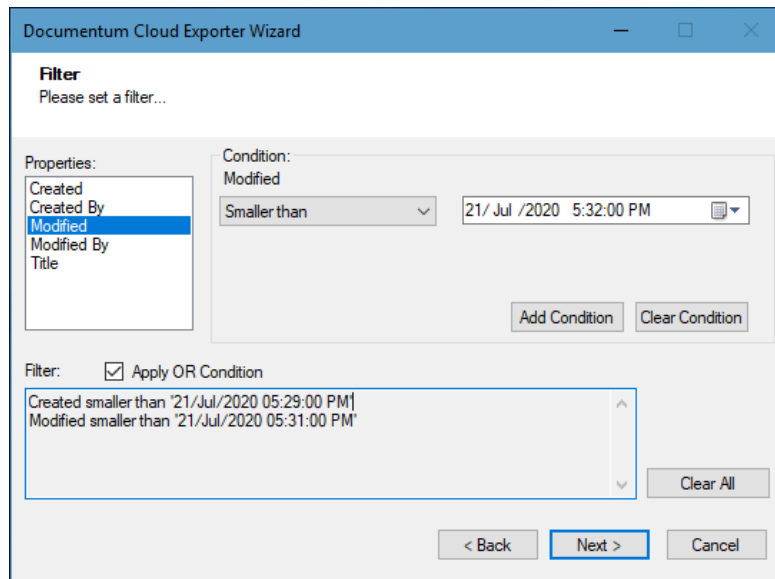


Figure 2-11 Multiple Filter Properties with OR Condition

11. Click **Next**. The Destination Folder screen appears.

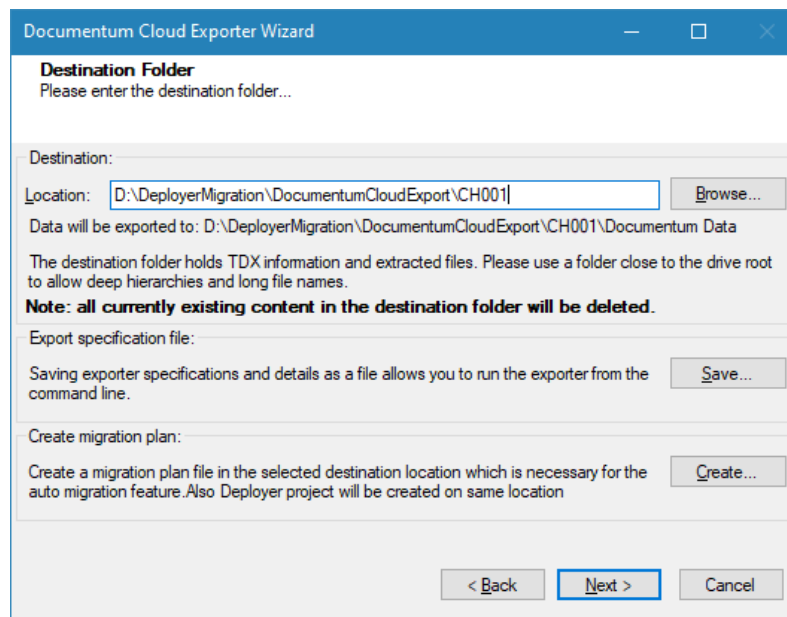


Figure 2-12: Destination Folder Screen

Specify where to export the files and generated TDX information. Make sure you are saving to a folder with a descriptive name and under a well-organized file system hierarchy. It is recommended to export to a folder that is as close to the root as possible.



When exporting deep hierarchy, the property which store the path for exported folder/files may exceed the maximum character supported by the property (typically 260 characters defined in the Windows API). To overcome such condition, it is recommended to export to a folder that is as close to the root as possible.

Starting in Windows 10, version 1607, MAX_PATH limitations have been removed from

common Win32 file and directory functions. Please, refer information published by Microsoft from following link and consult with your system administrator to remove the limitation whenever possible.

<https://docs.microsoft.com/en-us/windows/win32/fileio/maximum-file-path-limitation?tabs=registry>

Click **Save** under **Export specification file** for saving export specification details as an XML file which can be used to run the exporter in command-line mode. See the section '**Command-line Export**' below for more details.

12. Click **Next**.



If the export folder already exists, a warning appears, informing you that the destination folder already exists and if you continue all existing information will be deleted.

Clicking **OK** confirms overwrite and clicking **Cancel** returns you to the Destination Folder screen to change the destination folder.

An Exporting screen appears with a progress bar and execution report, and the export process begins. During the export process, a **Pause** button is displayed. Users can manually pause and resume the export process (despite of scheduled pause/resume time) by clicking on **Pause/Resume** button.

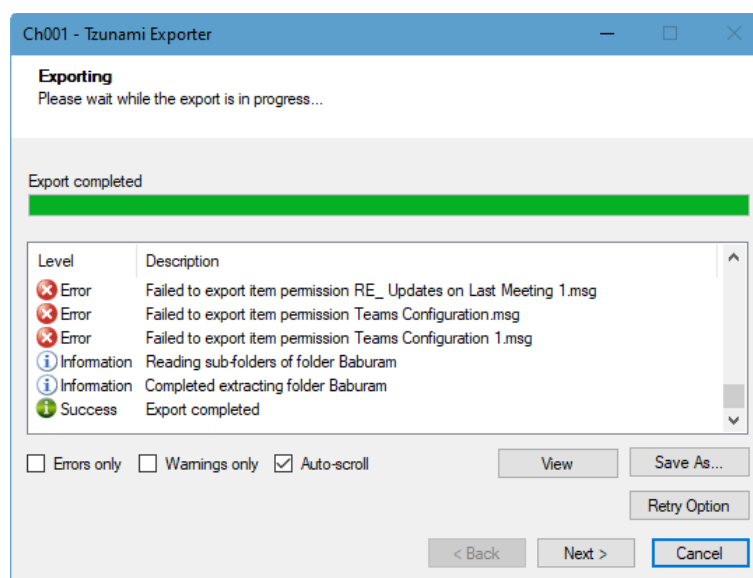


Figure 2-13: Exporter Progress Screen



You can save the export report by clicking **Save As...** after the export is complete.

You can check **Auto-scroll** to display the latest progress messages, as they appear.

You can display only export errors by checking **Errors only**.

You can display only export warnings by checking **Warnings only**.

13. Click **Retry Option**, if there are failed item(s).

14. Click **Next**. The Export Complete screen appears.
15. Click **Done**. The Tsunami Documentum Cloud Export wizard is closed.

If the exporter was run from Tsunami Deployer, after the extraction process completes successfully, you are prompted to load the exported data into the current Tsunami Deployer project. Clicking 'Yes' begins the process of loading the content from the previously exported TDX file into the project. For more information about loading sources, refer to the [Tsunami Deployer User Guide](#).

2.3 COMMAND-LINE EXPORT

Tsunami Exporter for Documentum Cloud provides ability to run export sessions non-interactively using command line instructions. This allows administrators to plan and schedule long running migration jobs through scripts, batch files and schedulers according to needs and organizational timetables. To run the exporter in batch mode you will need exporter specification file explained in the 'Choose Destination Folder' step of the export wizard. The file contains all the export option details including:

- Source ECM connectivity information (Server Address, User Name, Password etc.)
- Items to export
- Destination and Log Folder
- Filter
- Exporter specific options

This file can be edited to suit your needs however the XML schema of the file should not be altered. It is recommended that you generate a sample specifications file in the Destination Folder Screen selection step of the export wizard and use it as a template to create your own specification file.

Once the specification file is ready, you can run the exporter from command line using command:

TsunamiExporter.exe [-r <ResultFile>] -s <ExportSpecificationsFile>

Usage

Field	Description
-r	Outputs export results into an XML file [Optional]
-s	XML file containing export specifications

For example:

```
C:\User\Administrator> "C:\Program Files (x86)\Tsunami\Deployer  
4.0\Exporters\DocumentumCloud\TsunamiExporter.exe" -s "D:\Spec Files\specs1.xml"
```

```
C:\Program Files (x86)\Tsunami\Deployer 4.0\Exporters\DocumentumCloud >  
TsunamiExporter.exe -s "D:\Spec Files\specs1.xml"
```

Based on your needs you can create number of specification files and use them to run multiple export sessions as batch commands.



You will need to provide absolute path for **TsunamiExporter.exe** and **ExportSpecificationsFile** in the command if you are not running from the exporter installation directory.

In Microsoft Windows Server 2003 and Windows Server 2008 environment, if USG (Universal Security Group) is enabled, Users with low privileges sometimes cannot export ECM contents. To export contents using command line, User must run with elevated or administrative privileges.

To export contents with elevated or administrative privileges, you can run the exporter from command line using command:

```
RUNAS /trustlevel: "Unrestricted" "<ExporterInstallationDirectory>\TsunamiExporter.exe"  
-s "<Spec file path>\Specfilename.xml" "
```

For example:

```
C:\> RUNAS /trustlevel:"Unrestricted" "C:\Program Files (x86)\Tsunami\Deployer  
4.0\Exporters\DocumentumCloud\TsunamiExporter.exe " -s "D:\Spec Files\specs1.xml"
```

2.4 LOGGING SETTINGS

In Tsunami Exporter, log is written in a persistent medium having as much information as possible about events that occur while the software runs. That information plays a vital role while diagnosing if any issue occurs during the export process. Hence, it is worth mentioning that logger writes each and every details during.

Tsunami Inc provides the settings for writing logs. There are the following log levels that the user can change before running the tool.

1. Go to installation directory of the exporter and open **TsunamiExporter.exe.config** file in an editor.
2. Locate the key and set corresponding values as mentioned below:
 - **LogLevel:** Set the esteem to "Debug" or "High" or "Normal" or "low" or "none".

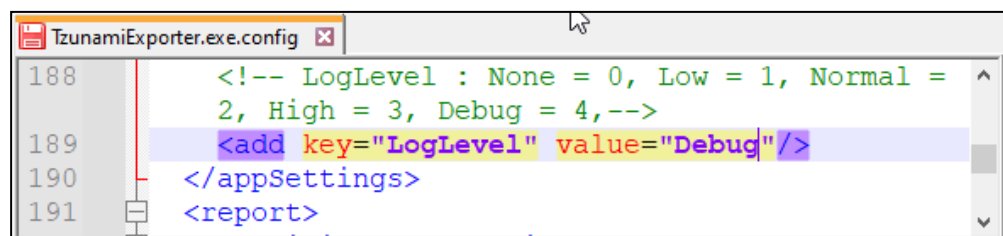


Figure 2-14 Log level Settings

- **Debug:** Writes logs as much as possible. So, this setting includes the maximum level of verbosity. By default, the tool is packaged with this setting.

- **High:** Writes logs as much as possible for warnings and errors. However, it will not log possible diagnostic information.
- **Normal:** Writes logs for anticipated errors and warnings.
- **Low:** Critical errors are logged. There will be as low as possible information logged.
- **None:** No such logs are written.

3. Save the file. Then run the exporter.

2.5 BEST PRACTICE

Due to the technological differences between Documentum Cloud and SharePoint, the following best practices should be taken into consideration:

- Follow the guidelines below when choosing the target structure.

Table 2-7: Target Structure Guidelines

Documentum Cloud Item Type	Relevant SharePoint Types
Cabinet	<ul style="list-style-type: none"> • Site/Site Collection • Document Library
Folder	Folder/Document Library
Document	Document
Virtual Document	<ul style="list-style-type: none"> • Folder • Document Library

3 ANNEX

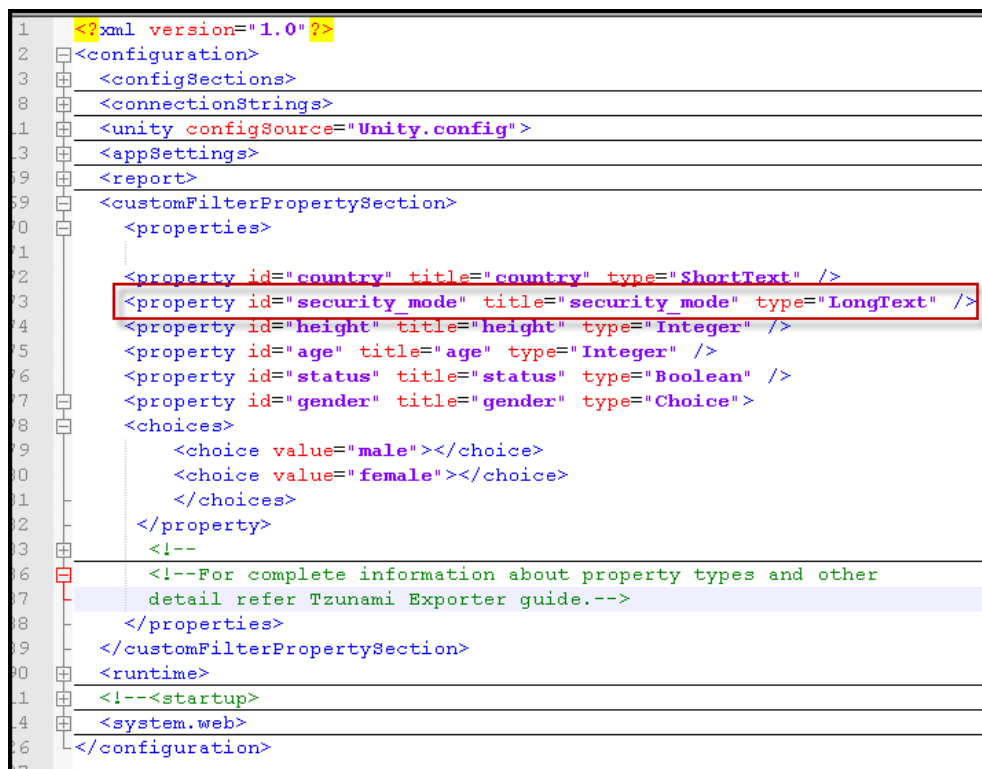
3.1 ADD CUSTOM FILTER PROPERTIES IN TZUNAMI DOCUMENTUM

CLOUD EXPORTER

You can add custom filter properties in the Tzunami Documentum Cloud Exporter using Tzunami Documentum Cloud Exporter configuration file (TsunamiExporter.exe.config). A flag '*CustomFilterPropertySection*' has been added in the configuration file which allows to add custom filtering properties in the Tzunami Documentum Cloud Exporter.

To add custom filter properties

1. Open the Exporter configuration file (TsunamiExporter.exe.config). The exporter configuration file is located at "C:\Program Files\Tsunami\Deployer 4.0\Exporters\DocumentumCloud" or where Tzunami Documentum Cloud Exporter is installed.
2. In the '*CustomFilterPropertySection*' flag, add the property to include in filter screen.

The image shows a screenshot of an XML configuration file, TsunamiExporter.exe.config, with a tree view on the left. The XML content is as follows:

```
1 <?xml version="1.0"?>
2 <configuration>
3   <configSections>
4   </configSections>
5   <connectionStrings>
6   </connectionStrings>
7   <unity configSource="Unity.config">
8   </unity>
9   <appSettings>
10  </appSettings>
11  <report>
12  </report>
13  <customFilterPropertySection>
14    <properties>
15      <property id="country" title="country" type="ShortText" />
16      <property id="security_mode" title="security_mode" type="LongText" />
17      <property id="height" title="height" type="Integer" />
18      <property id="age" title="age" type="Integer" />
19      <property id="status" title="status" type="Boolean" />
20      <property id="gender" title="gender" type="Choice">
21        <choices>
22          <choice value="male"></choice>
23          <choice value="female"></choice>
24        </choices>
25      </property>
26    </properties>
27    <!--
28    <!--For complete information about property types and other
29    detail refer Tsunami Exporter guide.-->
30  </customFilterPropertySection>
31  <runtime>
32  </runtime>
33  <!--<startup>
34  </startup>
35  <system.web>
36  </system.web>
37 </configuration>
```

The line containing the `<property id="security_mode" title="security_mode" type="LongText" />` is highlighted with a red rectangle.

Figure 3-1 Custom Filter Property Settings



Export a small content from Tsunami Documentum Cloud Exporter and refer to TDX file to find properties that you want to add as custom filtering properties.

```
<exportData connection="" username="" password="" fullDownload="True" customOptions="" />
<ecm type="Documentum" version="1.0" location="" />
<properties>
  <property id="title" title="Title" type="ShortText" />
  <property id="security_mode" title="security_mode" type="LongText" />
  <property id="r_object_id" title="r_object_id" type="ShortText" />
  <property id="isVirtualDoc" title="IsVirtualDocument" type="Boolean" />
  <property id="folderPath" title="Folder Path" type="LongText" />
  <property id="createdBy" title="Created By" type="User" />
  <property id="modifiedBy" title="Modified By" type="User" />
</properties>
```

Figure 3-2 Custom Property in TDX file.

3. Save the configuration file. The added custom filtering properties will be available in the Filtering Screen.

Documentum Exporter Wizard

Filter
Please set a filter...

Properties:

- Created By
- Format
- Modified By
- Modified By
- Object Type
- Owner
- r_object_id
- security_mode**
- State
- State Name
- Subject

Condition:
security_mode

Equals to

Filter:

Figure 3-3 Custom Property in Filter Screen

4 COPYRIGHT AND TRADEMARK

© Copyright 2024. Tzunami Inc. All rights reserved.

All intellectual property rights in this publication are owned by Tzunami, Inc. and protected by United States copyright laws, other applicable copyright laws and international treaty provisions. Tzunami, Inc. retains all rights not expressly granted. No part of this publication may be reproduced in any form whatsoever or used to make any derivative work without prior written approval by Tzunami, Inc.

No representation of warranties for fitness for any purpose other than what is specifically stated in this guide is made either by Tzunami, Inc. or by its agents.

Tzunami, Inc. reserves the right to revise this publication, and/or make improvements or changes in the product(s) and/or the program(s) described in this documentation at any time without prior notice.

Any software on removable media described in this publication is furnished under a license agreement included with the product as a separate document. If you are unable to locate a copy, please contact Tzunami, Inc. and a copy will be forwarded to you.

Tzunami is either a registered trademark or a trademark of Tzunami, Inc. in the United States and/or other countries.

All other brand or product names are trademarks or registered trademarks of their respective companies.

For further information, you can contact Tzunami Inc. at:

Tzunami Inc.

601 108th Avenue, NE

Suite 1900

Bellevue, WA 98004, USA

Email: sales@tzunami.com, support@tzunami.com

Web: <http://www.tzunami.com>