



# **Tsunami Deployer**

## **DocuShare DB Exporter Guide**

**Facilitates migration of Xerox DocuShare contents into Microsoft SharePoint**

**Version 4.0**

**Last Updated: April 29, 2024**

# Table of Contents

---

<b>PREFACE .....</b>	<b>IV</b>
INTENDED AUDIENCE.....	IV
CONVENTIONS .....	IV
TECHNICAL SUPPORT.....	V
COMMENTS AND SUGGESTIONS .....	V
<b>1   INSTALLING TZUNAMI DOCUSHARE DB EXPORTER .....</b>	<b>1-1</b>
1.1   SYSTEM REQUIREMENTS.....	1-2
1.2   PERMISSION REQUIREMENTS.....	1-2
1.2.1   Connecting DocuShare Server.....	1-2
1.3   INSTALLING TZUNAMI DOCUSHARE DB EXPORTER.....	1-3
1.4   CONFIGURATION OF TZUNAMI SERVICE SETTINGS.....	1-6
1.5   UNINSTALL TZUNAMI DOCUSHARE DB EXPORTER .....	1-6
1.5.1   Uninstallation using Installer .....	1-7
1.5.2   Uninstallation using Control Panel.....	1-7
<b>2   TZUNAMI DOCUSHARE DB EXPORTER.....</b>	<b>2-8</b>
2.1   OVERVIEW .....	2-9
2.1.1   Supported Types .....	2-9
2.1.2   Security .....	2-10
2.2   EXPORTING FROM XEROX DOCUSHARE.....	2-10
2.3   COMMAND-LINE EXPORT.....	2-26
2.4   LOGGING SETTINGS.....	2-27
2.5   BEST PRACTICE .....	2-28
<b>3   COPYRIGHT AND TRADEMARK.....</b>	<b>3-30</b>

## List of Tables

---

Table 1-1: System Requirements .....	1-2
Table 2-1: DocuShare DB Exporter, Welcome screen - Description of fields .....	2-11
Table 2-2: DocuShare Configurations Screen, Connection Tab – Description of Fields .....	2-12
Table 2-3: DocuShare Configurations Screen, General Tab – Description of Fields .....	2-13
Table 2-4: DocuShare Configurations Screen (Comments) – Description of Fields.....	2-15
Table 2-5 DocuShare Configurations, DB Settings Tab - Description of fields.....	2-18
Table 2-6: DocuShare Configurations, Actions Tab - Description of fields .....	2-20
Table 2-7 Analyzer Information Description.....	2-22
Table 2-8: Target Structure Guidelines .....	2-28

## List of Figures

---

Figure 1-1: Welcome Window .....	1-3
Figure 1-2:End-User License Agreement Window .....	1-4
Figure 1-3: Custom Setup Window .....	1-4
Figure 1-4: Installing Tsunami DocuShare DB Exporter Window.....	1-5
Figure 1-5: Installation Complete Window .....	1-5
Figure 1-6 Deployer Settings Manager .....	1-6
Figure 2-1: DocuShare Exporter Wizard – Welcome screen.....	2-11
Figure 2-2: DocuShare Configurations Screen – Connection Tab .....	2-12
Figure 2-3: DocuShare Configurations Screen – General Tab.....	2-13
Figure 2-4: DocuShare Configurations Screen – Advanced Tab.....	2-15
Figure 2-5 DocuShare Configurations Screen – DB Settings Tab .....	2-18
Figure 2-6 DocuShare Configurations Screen – Custom Tab .....	2-19
Figure 2-7: DocuShare Configurations Screen – Actions Tab.....	2-20
Figure 2-8 Analyze Option.....	2-21
Figure 2-9 Analyzer Information .....	2-21
Figure 2-10 Global ACL Mapping file.....	2-22
Figure 2-11 Folders Selection Screen.....	2-23
Figure 2-12: Filter Screen .....	2-23
Figure 2-13: Destination Folder Screen .....	2-24
Figure 2-14: Exporter Progress Screen.....	2-25
Figure 2-15 Log level Settings .....	2-28

# PREFACE

This guide provides installation procedures for Tsunami DocuShare DB Exporter and detail steps to extract contents from Xerox DocuShare using Tsunami DocuShare DB Exporter. The guide also describes how to extract contents non-interactive way using command-line instructions and best practice.

This preface contains the following topics.

- *Intended Audience*
- *Conventions*
- *Technical Support*
- *Comments and Suggestions*

## INTENDED AUDIENCE

Tsunami DocuShare DB Exporter Guide is intended for:

- System Administrators who are responsible for exporting Xerox DocuShare contents and setting migration environment using Tsunami Deployer.
- Project Managers and IT Managers who create and regulate usage of Tsunami Deployer and Tsunami DocuShare DB Exporter.

## CONVENTIONS

The following text conventions are used in this document:

- Commands and keywords are given in **boldface**
- Terminal sessions, console screens, or system file names are displayed in fixed width fonts



**Caution** indicates that the described action might result in program malfunction or data loss.



**Notes** contain helpful suggestions about or references to materials not contained in this manual.



**Tips** provide information that might help you solve a problem.

## TECHNICAL SUPPORT

Before contacting Tzunami Support team, ensure that you are referencing the latest copy of this user guide (Ctrl+Click to follow link) [Tzunami Deployer DocuShare Exporter Guide](#).

For additional information, please contact Tzunami Support Team at [support@tzunami.com](mailto:support@tzunami.com)

## COMMENTS AND SUGGESTIONS

Your feedback is important to us and will help us to provide the most accurate and high quality information possible in our documentation. Send us comments or suggestions by email to [support@tzunami.com](mailto:support@tzunami.com). Be sure to include as much of the following as possible:

- The document title.
- The location that the document was accessed from (either downloaded from Tzunami web site or the Tzunami Deployer User Guide and Tzunami DocuShare DB Exporter Guide available in Tzunami Deployer).
- The section or chapter number and the original text found in the document.



When you send information to Tzunami Support Team, you grant Tzunami a right to use or distribute the information internally within Tzunami Development and Support team for diagnostic purpose.

# 1 INSTALLING TZUNAMI DOCUSHARE DB EXPORTER

This chapter contains information about installing Tzunami DocuShare DB Exporter. It contains the following topics:

- *System Requirements*
- *Permission Requirements*
- *Installing Tzunami DocuShare DB Exporter*
- *Uninstall Tzunami DocuShare DB Exporter*

## 1.1 SYSTEM REQUIREMENTS

The following requirements must be met in order to use Tsunami DocuShare DB Exporter:

**Table 1-1: System Requirements**

Components	Minimum Requirements
Computer and processor	2GHz Pentium processor or equivalent
Memory	2 GB (Minimum); 4GB (Recommended)
Hard disk	50Mb (additional space will be required for the Tsunami Deployer projects, which may vary from 10 Mb to 4 GB).
Supported Operating System	Windows Server 2000/2003/2008/2012, Windows XP, Windows Vista, Windows 7, Windows 8 & Windows 10.
Supported Architectures	x86 and x64
Network	Intranet/Internet access depending on connectivity requirements
Display	800 x 600, 256 colors (minimum); 1024 x 768 high color, 32-bit (recommended)
Microsoft .NET Framework	Microsoft .Net Framework 2.0
Additional Requirements	DocuShare server configured and running

## 1.2 PERMISSION REQUIREMENTS

### 1.2.1 Connecting DocuShare Server

For connecting to DocuShare server using Tsunami DocuShare DB Exporter, User should be member of DocuShare Server.

## 1.3 INSTALLING TZUNAMI DOCUSHARE DB EXPORTER

Tsunami DocuShare DB Exporter requires that the latest version of the DocuShare Client to be installed and configured on the machine where the exporter is running. The latest version of the DocuShare Client can be downloaded from the Xerox DocuShare website, at <http://docushare.xerox.com>

To install Tsunami DocuShare DB Exporter:

1. Unzip the zip file, and run TsunamiDocuShareDBExporter.msi. The Tsunami DocuShare DB Exporter setup wizard (Welcome window) will launch. To advance through the install wizard, click **Next** on the bottom of the window.

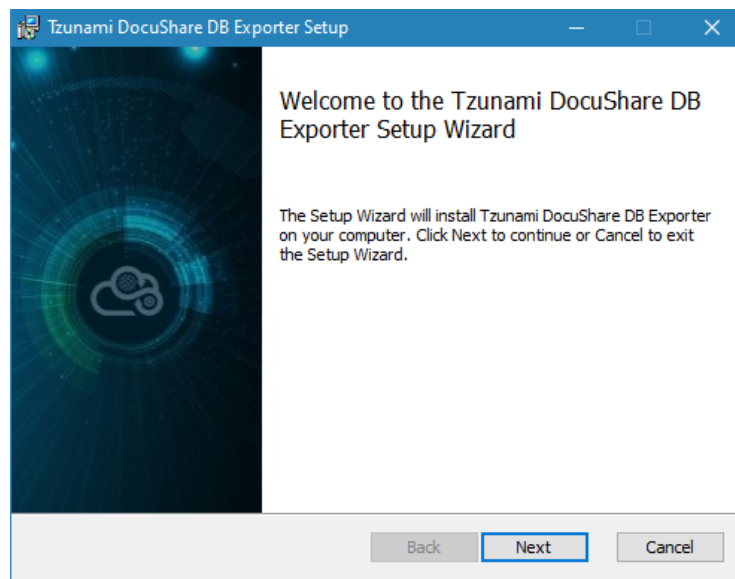
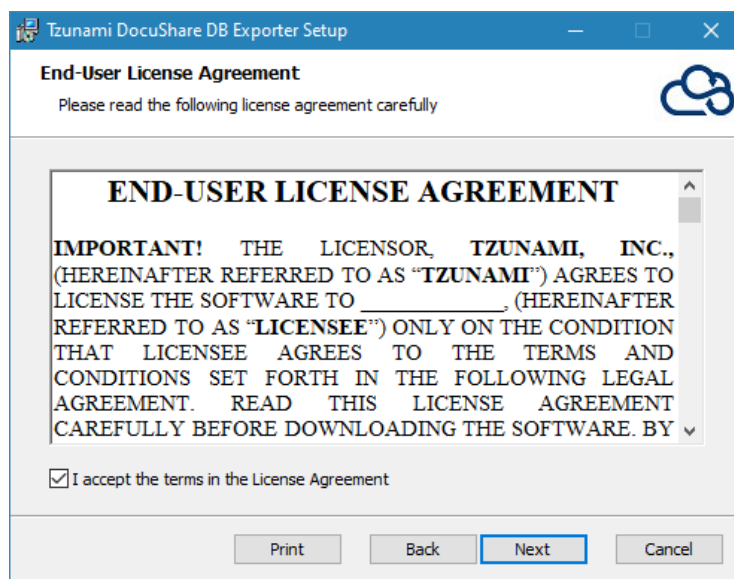


Figure 1-1: Welcome Window



2. In the End-User Licensing Agreement panel, click **"I accept the terms in the License Agreement"** and click **Next** to continue installation.

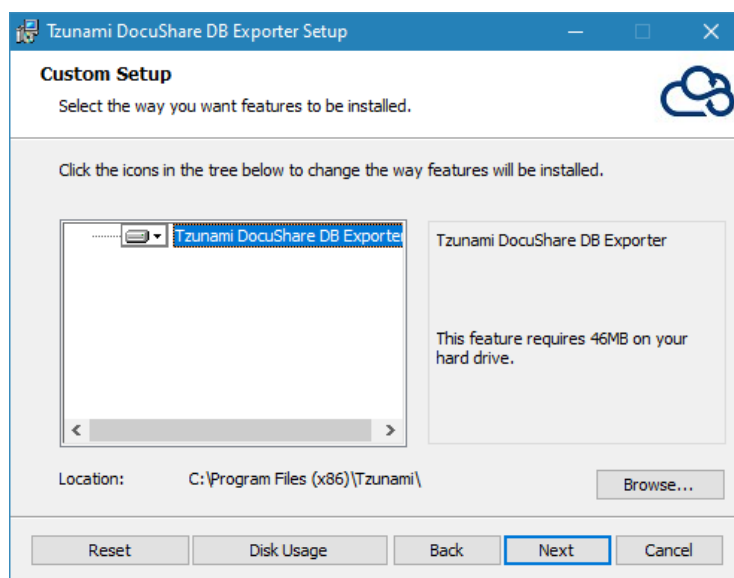


**Figure 1-2:End-User License Agreement Window**



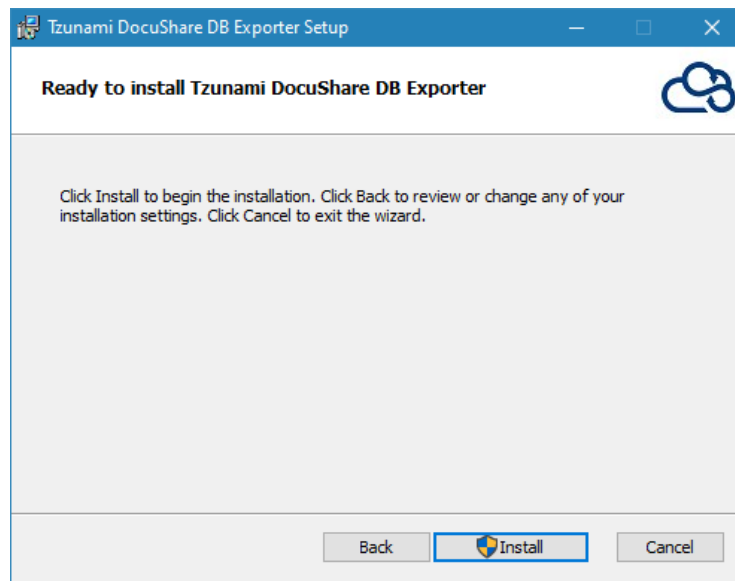
You are advised to read the terms of the license carefully before proceeding with the installation. If you decline the license terms, the installation cannot proceed.

3. In the Custom Setup panel, do one of the following:
  - To accept the default Destination Folder, click **Next**.
  - Click **Browse**, locate and select a destination folder, click **OK**, and then click **Next**.



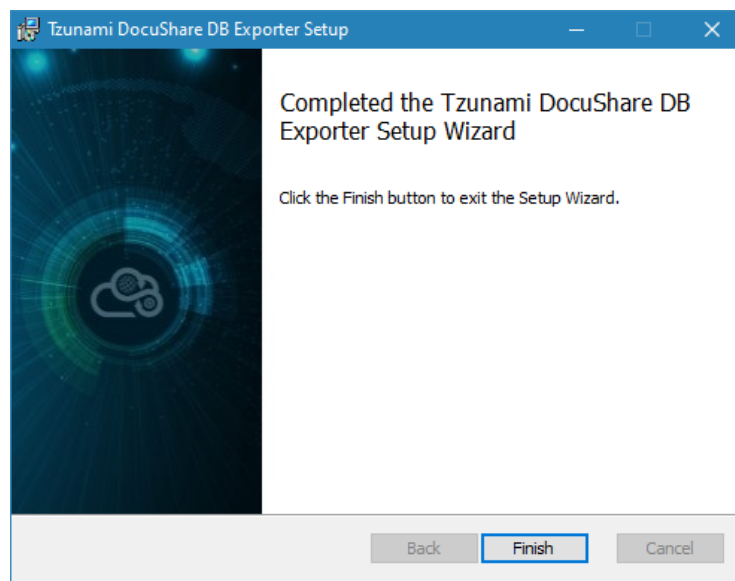
**Figure 1-3: Custom Setup Window**

4. In the Ready to install Tzunami DocuShare DB Exporter panel, click **Install**.



**Figure 1-4: Installing Tzunami DocuShare DB Exporter Window**

5. In the Completed Tzunami DocuShare DB Exporter Setup Wizard, to exit the wizard, click **Finish**.



**Figure 1-5: Installation Complete Window**



When Tzunami DocuShare DB Exporter is installed, it comes with a default license that can be used for evaluation purpose only. This license is limited in time and number of operations.

## 1.4 CONFIGURATION OF TZUNAMI SERVICE SETTINGS

1. When installing **Tsunami Deployer/Exporter/Remote Service** for the first time, a **Tsunami Service Settings** dialog is displayed. In **Tsunami Service Settings**, the Licensing Service, Link Resolver Service and O365 AD Service are pointed to localhost (same machine) and port.

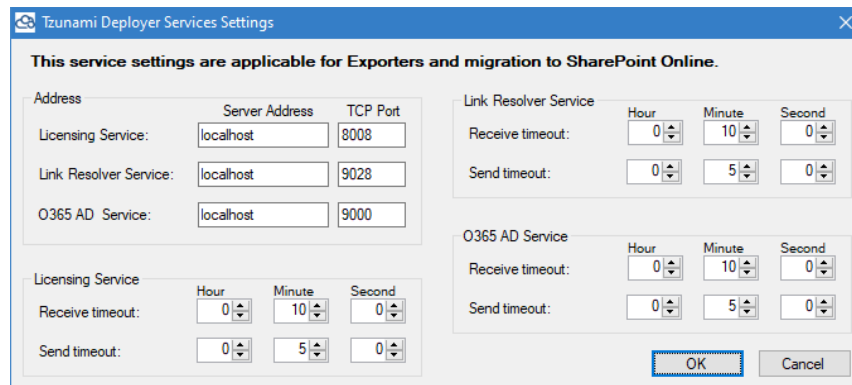


Figure 1-6 Deployer Settings Manager



User can run the **Settings Manager.exe** application from the installation directory to display this service settings dialog at any time and updated the settings to point the Tsunami services as required.

If these services are installed on another machine, point to that machine with machine name or IP Address and port.

**Licensing Service:** TCP port 8008 (or the port that the Licensing Service is listening on)

**Link Resolver Service:** TCP port 9028 (or the port that the Link Resolver Service is listening on)

**O365 AD Service:** TCP port 9000 (or the port that the O365 AD Service is listening on).

2. Click on **OK**.

## 1.5 UNINSTALL TZUNAMI DOCUSHARE DB EXPORTER

This section of the guide illustrates different ways to remove or uninstall Tsunami DocuShare DB Exporter from your DocuShare Server. Here are the two different ways to uninstall Tsunami DocuShare DB Exporters:

- Uninstallation using Installer
- Uninstallation using Control Panel

To uninstall Tsunami DocuShare DB Exporter, user needs to be a Local Administrator in the DocuShare DB Exporter installed machine. Uninstalling Tsunami DocuShare DB Exporter is simple and easy. You can remove or uninstall it in no time. You don't need to reboot your computer once the uninstalling process is complete.



Log files, licensing information files etc. will remain after uninstalling Tzunami DocuShare DB Exporter. You can manually delete those files from your computer if needed. By default logs are located at the “C:\Program Files\Tsunami\Deployer 4.0\Exporter\Logs”, or where Tzunami DocuShare DB Exporter is installed. Tzunami DocuShare DB Exporter Options information will be available in “C:\Documents and Settings\All users\Application Data\Local\Tsunami” location.

### 1.5.1 Uninstallation using Installer

#### To uninstall Tzunami DocuShare DB Exporter using Installer

1. Close **Tzunami DocuShare DB Exporter**.
2. Unzip the zip file, and run TzunamiDocuShareDBExporter.msi. The Tzunami DocuShare DB setup wizard (Welcome window) will launch. To advance through the remove installation wizard, click “**Next**” at the bottom of the screen.
3. In the Change, repair or remove installation panel, click “**Remove**” button to proceed to remove Tzunami DocuShare DB Exporter from your computer.
4. In the Ready to remove Tzunami DocuShare DB Exporter panel, click “**Remove**” to remove Tzunami DocuShare DB Exporter from your computer.
5. Click **Finish** to exit the setup wizard.

### 1.5.2 Uninstallation using Control Panel

#### To uninstall Tzunami DocuShare DB Exporter using Control Panel

1. Close **Tzunami DocuShare DB Exporter**.
2. Click **Start > Control Panel > Add or Remove Programs**.
3. In Add or Remove Programs window, right-click the Tzunami DocuShare DB Exporter application you want to remove, and then click **Uninstall**.

## 2 TZUNAMI DOCUSHARE DB EXPORTER

This chapter contains information about Tzunami DocuShare DB Exporter. It contains the following topics:

- *Overview*
- *Exporting from Xerox DocuShare*
- *Command-line Export*
- *Logging settings*
- *Best Practice*

## 2.1 OVERVIEW

Xerox DocuShare is a web-based application that allows you to manage electronic contents. It provides document management, collaboration, image capture, and Web publishing capabilities to support ad hoc information sharing across the enterprise.

Tsunami DocuShare DB Exporter enables migrating Xerox DocuShare Web-based contents into SharePoint 2007, SharePoint 2010, SharePoint 2013, SharePoint 2016, SharePoint 2019 or SharePoint Online using Tsunami Deployer.

To load DocuShare content into Tsunami Deployer, you must first extract the content, using Tsunami DocuShare DB Exporter, into TDX (Tsunami Deployer Export) and STDX (Separate Tsunami Deployer Export) files. You can then load this TDX file into a Deployer project.



When working with Tsunami Deployer on several machines, you can run an export on one machine and load the exported data on another.

Tsunami DocuShare DB Exporter is an extension module of Tsunami Deployer. You can work with this module independently of Tsunami Deployer. See Tsunami Deployer User Guide for more details about Tsunami Deployer.

### 2.1.1 Supported Types

The following items are exported from DocuShare:

- Workspaces
- Collections
- Calendars and Events
- Bulletin Boards, Topics and Replies
- Weblogs and Weblog Entries
- Documents
- URLs
- Mail Messages
- Wiki



You can also export custom objects from DocuShare.

### 2.1.2 Security

In addition to the structure and items, Tsunami DocuShare DB Exporter extracts security information. The following permissions are used in the exporter:

- Reader
- Writer
- Manager
- None

Each item is assigned an ACL defining the permissions of the various members according to the roles they were assigned.



The exporter automatically creates four default roles that are used during the deployment process. The roles include Reader (Read permission), Writer (Reader and Writer permissions), and Manager (Reader, Writer and Manager Permissions).

## 2.2 EXPORTING FROM XEROX DOCUSHARE

The Tsunami DocuShare DB Exporter enables you to export DocuShare contents to a TDX file.



When exporting, keep the following in mind:

**Export in small chunks:** When exporting from your source system, perform the export in small chunks of about 40K-50K files each that have a common business logic or some other logic.

**Ensure consistency:** Make sure that the content of the different exports does not overlap and that, while exporting, no changes are made to the source data.

### To export to a TDX file:

1. In Tsunami Deployer, Right-Click in the DocuShare tab source store area and select **Export DocuShare to TDX**.

Or


Click **Start > All Programs > Tsunami > Tsunami DocuShare DB Exporter**

The Welcome screen of the Export Wizard appears.



Figure 2-1: DocuShare Exporter Wizard – Welcome screen

Table 2-1: DocuShare DB Exporter, Welcome screen - Description of fields

Fields	Description
Extract files into file system (otherwise files will be extracted during commit)	<p>Check this option if you wish to download the binary files from DocuShare server to the file system and store them in the FileStore folder, in the same location as the TDX file.</p> <p>If this option is unchecked, no files are downloaded at the export stage. The files are only downloaded when they are needed, in the commit stage.</p> <p> To download files from DocuShare server during commit stage, you must install Tsunami DocuShare DB Exporter on the Tsunami Deployer installed machine.</p>

2. Click **Next**. The DocuShare Configurations screen appears. Use this screen to enter connection settings required to connect to DocuShare Server. The screen includes three tabs: Connection, General, and Advanced.




a. **Connection Tab**

The **Connection** tab allows you to enter the information required for connecting to the DocuShare Server.

The screenshot shows a window titled "DocuShare Exporter Wizard" with a subtitle "DocuShare Configurations" and "Configure DocuShare Settings...". It features a tabbed interface with "Connection" selected, along with "General", "Advanced", "DB Settings", "Custom", and "Actions". Under "Connection settings:", there is a "Server address:" text box containing "http://docuorcl:8080/docushare/dsweb" and a "Time Zone:" dropdown menu set to "(UTC+05:45) Kathmandu". At the bottom are "< Back", "Next >", and "Cancel" buttons.

Figure 2-2: DocuShare Configurations Screen – Connection Tab

Table 2-2: DocuShare Configurations Screen, Connection Tab – Description of Fields

Field	Description
<b>Connection settings</b>	
Server address	Enter the URL of the DocuShare Server. For example, <a href="http://DocuShare:8080/docushare/dsweb">http://DocuShare:8080/docushare/dsweb</a>
	 User must ensure the valid address oneself. Invalid address will result incorrect resolved links in target and problematic migration reports.
Time Zone	Select the time zone of the server.

## b. General Tab

The **General** tab allows you to select the item types and item versions that you wish to migrate from DocuShare server.

DocuShare Exporter Wizard

DocuShare Configurations  
Configure DocuShare Settings...

Connection General Advanced DB Settings Custom Actions

Versions

☒ Export Versions Max number of versions: 0 '0' to export all versions

Create Document name from:

☒ Filename ☐ Title

☐ Initial Version(Original) ☐ Preferred Version ☒ Last Version (Latest)




Export

☒ Workspaces ☐ Weblogs ☒ Mail Messages  
☒ Collections ☐ Weblog Comments ☒ Wiki  
☒ Documents ☒ Discussions ☒ URL  
☒ Documents Comments ☒ Calendars ☒ Custom Properties  
☒ Personal Collection

< Back Next > Cancel

Figure 2-3: DocuShare Configurations Screen – General Tab

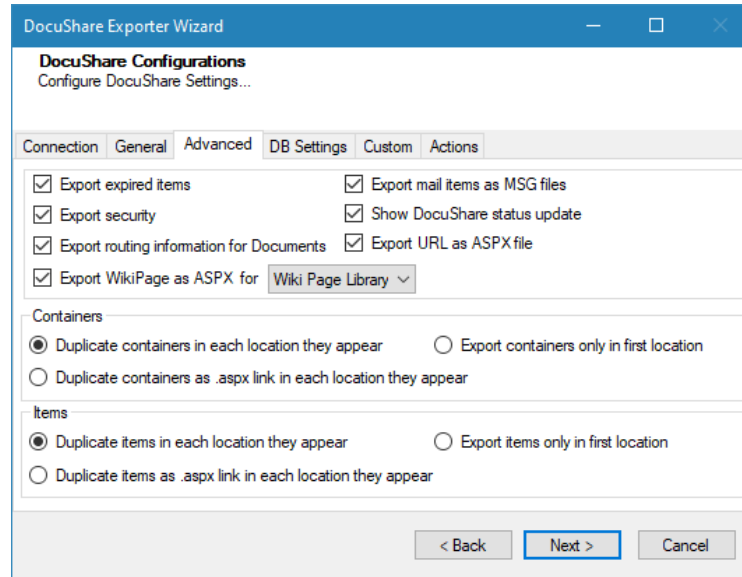
Table 2-3: DocuShare Configurations Screen, General Tab – Description of Fields

Field	Description
<b>Versions</b>	
Export Versions	<p>Check this option if you wish to export all versions of items.</p> <p> Uncheck this option, if you wish to export current versions of each item.</p>
Max number of versions	<p>Enter the number of versions you would like to export for each item.</p> <p> Setting this value to zero will export all versions.</p> <p>If number of maximum versions is specified, number of versions from latest version are exported.</p>
<b>Create Document name from</b>	<p><b>Tsunami DocuShare DB Exporter</b> allows the user to export the documents, with filenames based on their Initial, Preferred or Last Version. Users need to select Filename or Title option.</p> <p> DocuShare Server supports same/unique filenames as well as same/unique file types while uploading versions to a document.</p> <p>However, Microsoft SharePoint does not support different file name and type while creating document version for a document. Hence, in case of conflicts in file types, user can change the name or file type of the file in question according to the 'File Name' property in Source, after they migrate it to the Target SharePoint.</p>

Field	Description
Filename	Select this option to make document name based on filename.
Title	Select this option to make document name based on title.
Initial Version(Original)	Select this option to export File Names of all versions of the file based on its Initial Version.
Preferred Version	Select this option to export File Names of all versions of the file based on its Preferred Version.
Latest Version (Latest)	Select this option to export File Names of all versions of the file based on its Last Version.
<b>Export</b>	
Workspaces	Check this option if you wish to export Workspaces from DocuShare.
Collections	Check this option if you wish to export Collections from DocuShare.
Documents and Documents Comments	Check this option if you wish to export Documents and Document Comments from DocuShare.
Weblogs and Weblog Comments	Check this option if you wish to export Weblogs and Weblog Comments from DocuShare.
Discussions	Check this option if you wish to export Discussions from DocuShare.
Calendars	Check this option if you wish to export Calendars from DocuShare.
Mail Messages	Check this option if you wish to export Mail Messages from DocuShare.
Wiki	Check this option if you wish to export Wikis from DocuShare.
URL	Check this option if you wish to export URL from DocuShare.
Custom Properties	Check this option if you wish to export custom properties of the objects from DocuShare.

c. **Advanced tab**


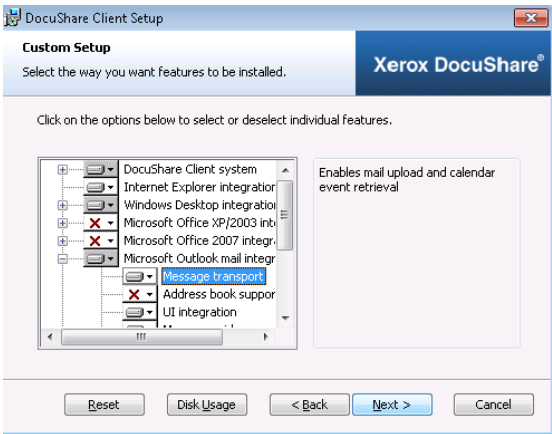

The **Advanced** tab allows you to specify the export options such as security, Wiki Page, mail items and mail messages from DocuShare Server. You can specify how to export Containers and Items from DocuShare.





**Figure 2-4: DocuShare Configurations Screen – Advanced Tab**

**Table 2-4: DocuShare Configurations Screen (Comments) – Description of Fields**

Field	Description
Export expired items	Check this option if you wish to export items that are marked as expired in DocuShare.

Field	Description
Export mail items as MSG files	<p>Check this option if you wish to export Mail Messages from DocuShare.</p> <p> The following application must be installed on the machine that is used to run the Tsunami DocuShare DB Exporter to export mail messages as MSG File:</p> <ul style="list-style-type: none"> <li>• <b>Microsoft Office Outlook</b></li> <li>• <b>DocuShare Client</b></li> <li>• <b>DocuShare Outlook Client</b></li> </ul> <p>You must create a server map in the DocuShare client to point to the DocuShare Server for this feature to work. To extract Mail Messages as MSG files, you must install <b>Message Transport</b> module when installing DocuShare client.</p> 
Export security	Check this option if you wish to export security details of the various items.
Show DocuShare status update	Check this option if you wish to display DocuShare status update
Export routing information for Documents	<p>Check this option if you wish to export routing information for Documents.</p> <p> Exporting of routing information is resource intensive. Therefore, it is recommended that this option is checked only if routing is enabled in the source and the information needs to be extracted.</p>
Export URL as ASPX file	Check this option if you wish to export URL as ASPX file.

Field	Description
Export Wiki Page as ASPX file	Check this option if you wish to export Wiki page as ASPX for Wiki Page Library or Page Library.
<b>Containers</b>	<p>Specify how to export containers from DocuShare.</p> <ul style="list-style-type: none"> <li>• Duplicate containers in each location they appear</li> <li>• Export containers only in first location.</li> <li>• Duplicate items as .aspx link in each location they appear.</li> </ul> <p> DocuShare containers can be located in more than one location, but SharePoint does not support this behavior. You can specify whether to export such containers only once (in the first parent it appears in), or to duplicate them in each location in which they appear.</p>
<b>Items</b>	<p>Specify how to export items from DocuShare.</p> <ul style="list-style-type: none"> <li>• Duplicate items in each location they appear</li> <li>• Export items only in first location</li> <li>• Duplicate items as .aspx link in each location they appear.</li> </ul> <p> DocuShare items can be located in more than one location, but SharePoint does not support this behavior. You can specify whether to export such items only once (in the first parent it appears in), or to duplicate them in each location in which they appear.</p>

#### d. DB Setting tab

The **DB Settings** tab allows you to enter Database Credential to connect with the DocuShare database server. Please, fill-up the database connection parameters.

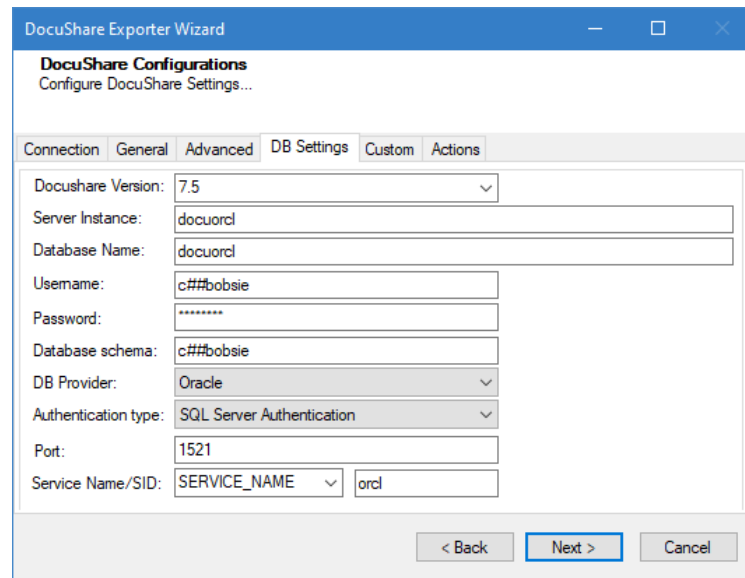



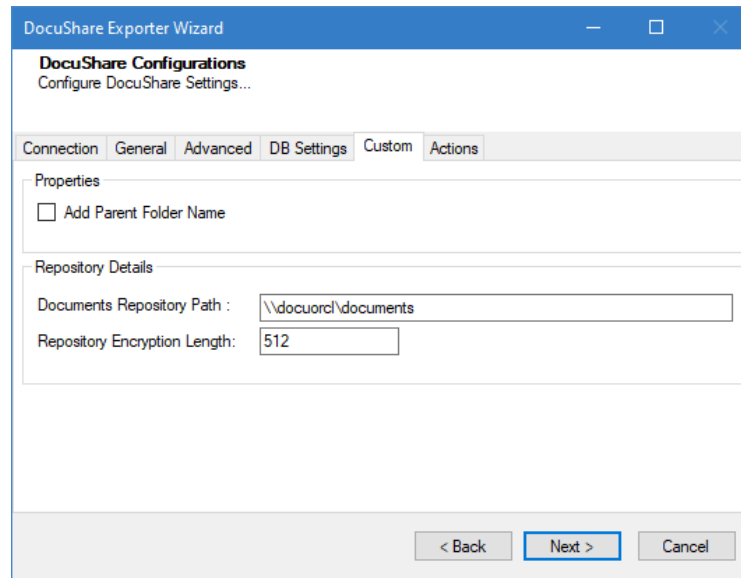
Figure 2-5 DocuShare Configurations Screen – DB Settings Tab

Table 2-5 DocuShare Configurations, DB Settings Tab - Description of fields

Field	Description
Docushare Version	Select the DocuShare Database version.
Server Instance	Enter the Server Instance for DocuShare Server.
Database Name	Enter the Database Name for DocuShare Server.
Username	Enter the username that has access to the Database on DocuShare Server.
Password	Enter the password for the account specified in the Username.
Database schema	Enter the Database schema for DocuShare Server.
DB Provider	Select the DB Provider from the drop down list.
Authentication type	Select the LiveLink Database Authentication type from the drop down list.
Port	Enter the database port.  If port is left empty, it will take port number <b>1433</b> for MSSQL database and <b>1521</b> for Oracle database in default.
Service Name/SID	Select Service name or SID to use. Then, provide the value.

### e. Custom tab

The **Custom** tab allows you to use the additional capabilities.

The image shows a screenshot of the 'DocuShare Exporter Wizard' window, specifically the 'Custom' tab. The window has a title bar with standard Windows controls. Below the title bar, the text 'DocuShare Configurations' and 'Configure DocuShare Settings...' is displayed. A tabbed interface at the top shows 'Connection', 'General', 'Advanced', 'DB Settings', 'Custom' (selected), and 'Actions'. The 'Custom' tab contains two sections: 'Properties' with a checkbox for 'Add Parent Folder Name' (which is unchecked), and 'Repository Details' with two text input fields. The first field is labeled 'Documents Repository Path :' and contains the text '\\docuorcl\documents'. The second field is labeled 'Repository Encryption Length:' and contains the number '512'. At the bottom of the window, there are three buttons: '< Back', 'Next >' (highlighted with a blue border), and 'Cancel'.

**Figure 2-6 DocuShare Configurations Screen – Custom Tab**

**Add Parent Folder Name:** If this option is checked, immediate parent folder name will be added as property in respective document and folder. The added property helps to identify the parent folder of documents while deploying content during migration process in Tsunami Deployer.

**Document Repository Path:** Specify the document repository path. User running the Exporter should have minimum read permission on the shared location. Before running the export process, please make sure the repository path is accessible from the exporter running computer.



Currently wiki page attachment is not supported by this feature.

**Repository Encryption Length:** Specify the number of folders available in Documents Repository Path. Number of folders should be exactly matched otherwise documents from shared location may not be extracted. Therefore, check for hidden folders, and permissions before counting so that folder count will be exact.



## f. Actions tab

The **Actions** tab allows you to use different actions that can be taken in the exporter.

- **Auto Pause:** The export process is paused and resumed using this functionality at a set time each day. The feature can be turned on or off using the **Use Auto Pause** check box. The feature can be checked by the user, who can also select the pause and resume times. The user can deselect it to turn off the feature.

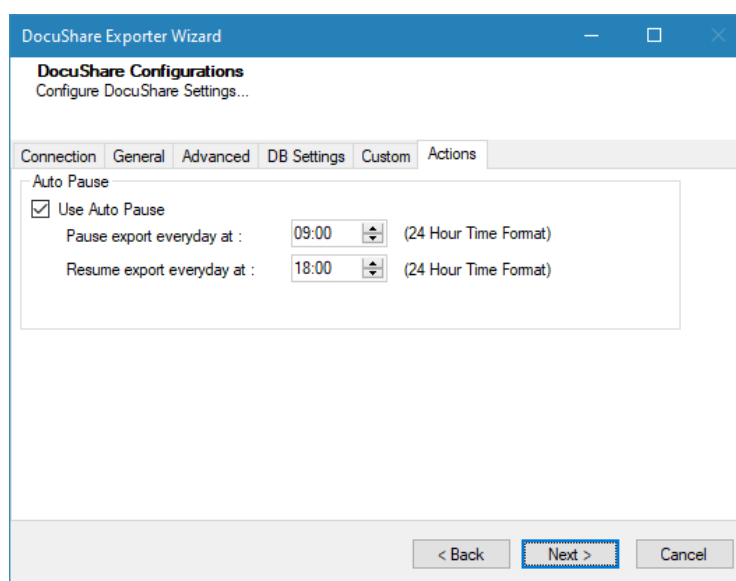


Figure 2-7: DocuShare Configurations Screen – Actions Tab

Table 2-6: DocuShare Configurations, Actions Tab - Description of fields

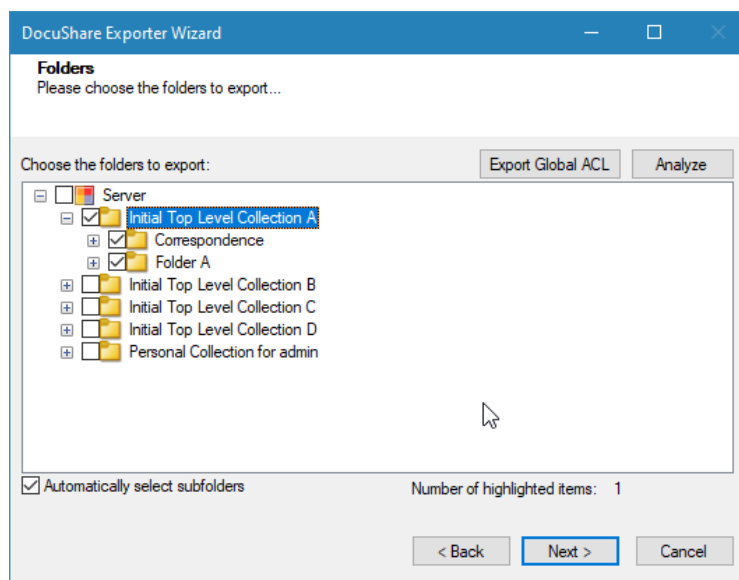
Field	Description
<b>Auto Pause</b>	
Use Auto Pause	To use the auto-pause and resume feature, select this option. To turn off this function, uncheck this box.
Pause export every day at	Set the daily time that the export process should pause.
Resume export every day at	Set the daily time for restarting the interrupted export operation.

The settings for actions are only applied to this exporter instance that is currently executing when the user clicks the **Next** button.

3. Click **Next**. The Folders screen appears.

Tsunami Exporter provides quick analysis option before exporting to know the size, count of contents inside selected folder.

If you want to analyze the content: Check on the Folder(s) in tree view, then **Analyze** button is enabled. Click **Analyze**.

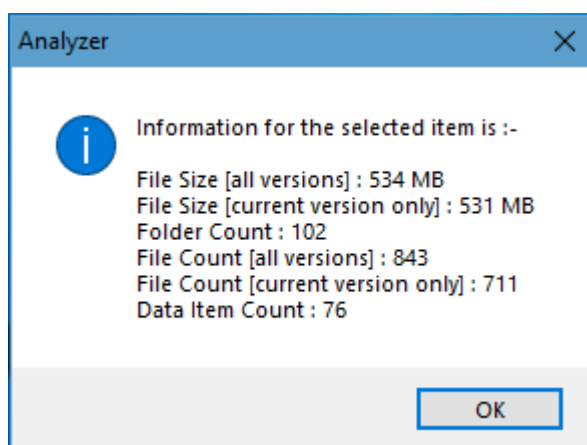


**Figure 2-8 Analyze Option**



Please, provide the database connection settings prior to perform the content analysis. Refer **DB Settings tab** section.

Analyzer screen appears. Analyzer screen provides the detail information that helps to plan for the export (chunk size) based on File size and number of items.



**Figure 2-9 Analyzer Information**

**Table 2-7 Analyzer Information Description**

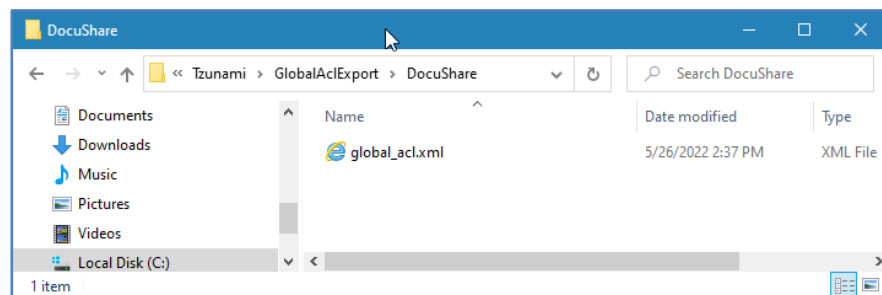
Field	Description
File Size [all versions]	Provides the total size of files for all versions of documents.
File Size [current version only]	Provides the total size of files for current version of documents.
Folder Count	Provides the number of folders.
File Count [all versions]	Provides the total number of files for all versions of documents.
File Count [current version only]	Provides the total number of files for current versions of documents.
Data Item Count	Provides the total number of data item.

You can export the Roles, Groups and Users in a file by clicking on **Export Global ACL** button. A progress bar appears while exporting the information. The file is by default exports to:

**Location:** C:\ProgramData\Tsunami\GlobalAclexport\DocuShare

**File Name:** global\_acl.xml

This file is used in Tsunami Deployer when using Global ACL Mapping. Refer **Deployer User Guide's** section **Global ACL Mapping** for more details.



**Figure 2-10 Global ACL Mapping file**

4. Select folders to export.

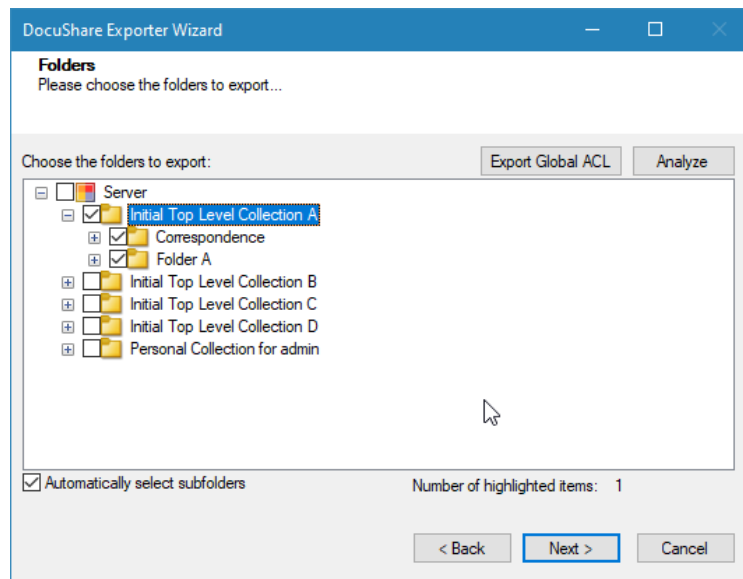


Figure 2-11 Folders Selection Screen



You can select all subfolders of a selected folder by checking '**Automatically select subfolders**'.

5. Click **Next**. The Filter screen appears.

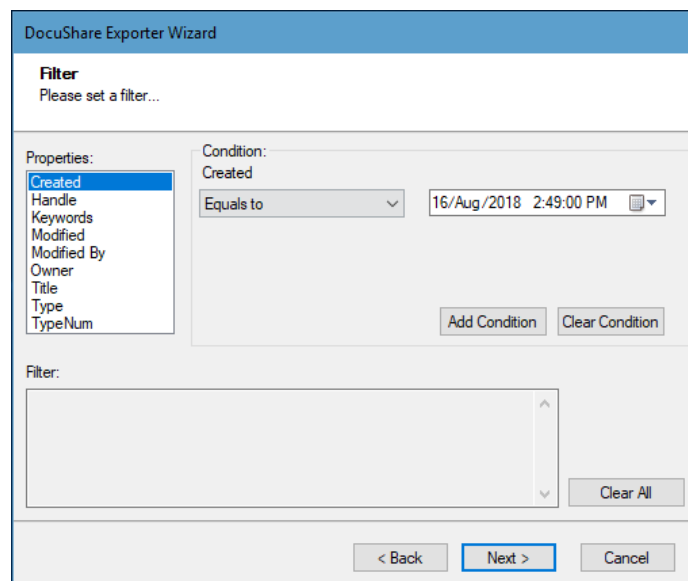


Figure 2-12: Filter Screen

6. Set up filtering as follows:
  - a) In the Properties field, select a property.
  - b) In the Condition field, select a condition from the dropdown list and enter or select values in the corresponding field.

- c) Click **Add Condition**. The condition is added to the Filter area, displaying the full filter expression.



You can only add one condition per property.

You can edit a condition for a property by selecting the property and modifying the condition type or values that are currently assigned to it.

You can remove a condition from a property or all the conditions from all the properties by clicking **Clear Condition** or **Clear All**, respectively.

This option works only for Data Items.

If multiple conditions are applied, only items that match all conditions are exported.

While adding filter condition for a document using the *Handle* property, you have to use 'File' (**For e.g.** File - 1234) instead of 'Document' (**For e.g.** Document - 1234).

For oracle base database while applying the filter condition for created and modified date, consider only the date for condition greater than, smaller than, between, different than during the export. Consider both date and time when exporting an MSQl database.

7. Click **Next**. The Destination Folder screen appears.

**Figure 2-13: Destination Folder Screen**

Specify where to export the files and generated TDX information. Make sure you are saving to a folder with a descriptive name and under a well-organized file system hierarchy. It is recommended to export to a folder that is as close to the root as possible.



When exporting deep hierarchy, the property which store the path for exported folder/files may exceed the maximum character supported by the property (typically 260 characters defined in the Windows API). To overcome such condition, it is recommended to export to a folder that is as close to the root as possible.

Starting in Windows 10, version 1607, MAX\_PATH limitations have been removed from common Win32 file and directory functions. Please, refer information published by Microsoft

from following link and consult with your system administrator to remove the limitation whenever possible.

<https://docs.microsoft.com/en-us/windows/win32/fileio/maximum-file-path-limitation?tabs=registry>

Click **Save** under **Export specification file** for saving export specification details as an XML file which can be used to run the exporter in command-line mode. See the section '**Command-line Export**' below for more details.

8. Click **Next**.



If the export folder already exists, a warning appears, informing you that the destination folder already exists and if you continue all existing information will be deleted.

Clicking **OK** confirms overwrite and clicking **Cancel** returns you to the Destination Folder screen to change the destination folder.

An Exporting screen appears with a progress bar and execution report, and the export process begins. During the export process, a **Pause** button is displayed. Users can manually pause and resume the export process (despite of scheduled pause/resume time) by clicking on **Pause/Resume** button.

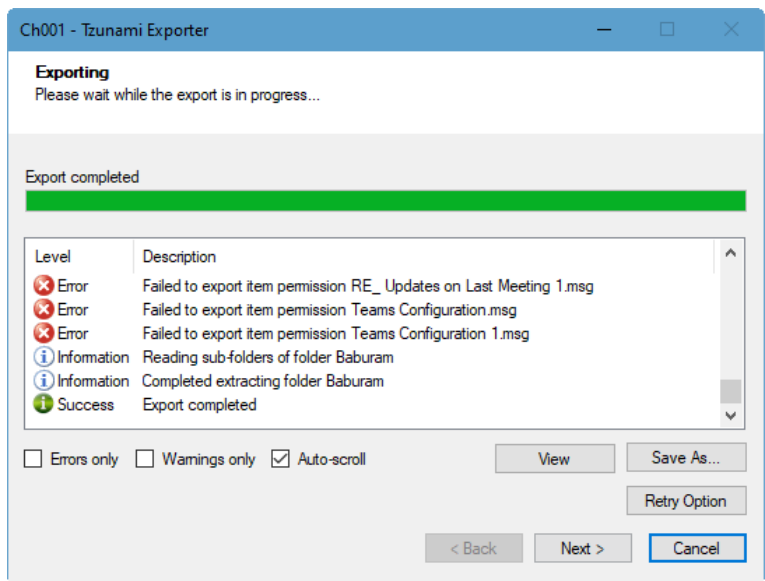


Figure 2-14: Exporter Progress Screen



You can save the export report by clicking **Save As...** after the export is complete.

You can check **Auto-scroll** to display the latest progress messages, as they appear.

You can display only export errors by checking **Errors only**.

You can display only export warnings by checking **Warnings only**.

9. Click **Retry Option**, if there are failed item(s).

10. Click **Next**. The Export Complete screen appears.
11. Click **Done**. The DocuShare Export wizard is closed.

After the extraction process completes successfully, you are prompted to load the exported data into the current Tsunami Deployer project if you are running the exporter from the Deployer. Clicking '**Yes**' begins the process of loading the content from the previously exported TDX file into the project. If you are running the exporter separately to export contents, you can load the exported TDX later into a Deployer project. For more information about loading sources, refer to the [Tsunami Deployer User Guide](#).

## 2.3 COMMAND-LINE EXPORT

Tsunami Exporter for DocuShare provides ability to run export sessions non-interactively using command line instructions. This allows administrators to plan and schedule long running migration jobs through scripts, batch files and schedulers according to needs and organizational timetables. To run the exporter in batch mode you will need exporter specification file explained in the 'Choose Destination Folder' step of the export wizard. The file contains all the export option details including:

- Source ECM connectivity information (Server Address, User Name, Password etc.)
- Items to export
- Destination and Log Folder
- Filter
- Exporter specific options

This file can be edited to suit your needs however the XML schema of the file should not be altered. It is recommended that you generate a sample specifications file in the Destination Folder Screen selection step of the export wizard and use it as a template to create your own specification file.

Once the specification file is ready, you can run the exporter from command line using command:

**TsunamiExporter.exe [-r <ResultFile>] -s <ExportSpecificationsFile>**

### Usage

Field	Description
-r	Outputs export results into an XML file [Optional]
-s	XML file containing export specifications

### For example:

```
C:\User\Administrator> "C:\Program Files (x86)\Tsunami\Deployer 4.0\Exporters\DocuShare  
\TsunamiExporter.exe" -s "D:\Spec Files\specs1.xml"
```

```
C:\Program Files (x86)\Tsunami\Deployer 4.0\Exporters\DocuShare> TsunamiExporter.exe -s "D:\Spec Files\specs1.xml"
```

Based on your needs you can create number of specification files and use them to run multiple export sessions as batch commands.



You will need to provide absolute path for **TsunamiExporter.exe** and **ExportSpecificationsFile** in the command if you are not running from the exporter installation directory.

In Microsoft Windows10, Windows 8, Windows 7, Windows Vista, Windows Server 2003 and Windows Server 2008 environment, if USG (Universal Security Group) is enabled, Users with low privileges sometimes cannot export ECM contents. To export contents using command line, User must run with elevated or administrative privileges.

To export contents with elevated or administrative privileges, you can run the exporter from command line using command:

```
RUNAS /trustlevel:"Unrestricted" "<ExporterInstallationDirectory>\TsunamiExporter.exe -s "<Spec file path>\Specfilename.xml \" "
```

**For example:** RUNAS /trustlevel:"Unrestricted" "C:\Program Files (x86)\Tsunami\Deployer 4.0\Exporters\DocuShareDB\TsunamiExporter.exe -s "D:\Spec Files\specs1.xml\" "

## 2.4 LOGGING SETTINGS

In Tsunami Exporter, log is written in a persistent medium having as much information as possible about events that occur while the software runs. That information plays a vital role while diagnosing if any issue occurs during the export process. Hence, it is worth mentioning that logger writes each and every details during.

Tsunami Inc provides the settings for writing logs. There are the following log levels that the user can change before running the tool.

1. Go to installation directory of the exporter and open **TsunamiExporter.exe.config** file in an editor.
2. Locate the key and set corresponding values as mentioned below:
  - **LogLevel:** Set the esteem to "Debug" or "High" or "Normal" or "low" or "none".



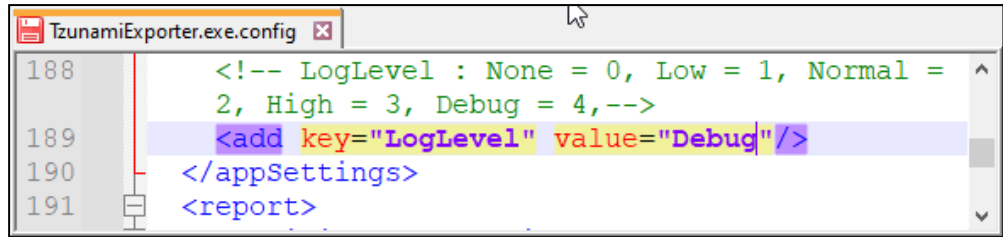


Figure 2-15 Log level Settings

- **Debug:** Writes logs as much as possible. So, this setting includes the maximum level of verbosity. By default, the tool is packaged with this setting.
- **High:** Writes logs as much as possible for warnings and errors. However, it will not log possible diagnostic information.
- **Normal:** Writes logs for anticipated errors and warnings.
- **Low:** Critical errors are logged. There will be as low as possible information logged.
- **None:** No such logs are written.

3. Save the file. Then run the exporter.

## 2.5 BEST PRACTICE

Due to the technological differences between and SharePoint, the following best practices should be taken into consideration:

- Follow the guidelines below when choosing the target structure.

Table 2-8: Target Structure Guidelines

DocuShare Item Type	Relevant SharePoint Types
Workspaces	<ul style="list-style-type: none"> <li>• Web Application (create manually in SharePoint).</li> <li>• Site Collection</li> </ul>
Collection	<ul style="list-style-type: none"> <li>• Site Collection/Site</li> <li>• Document Library</li> </ul>
Calendar	Calendar
Events	Calendar Items
Bulletin Boards, Topics and Replies	<ul style="list-style-type: none"> <li>• Discussion</li> <li>• Discussion Messages</li> </ul>
Weblogs and Weblog Entries	<ul style="list-style-type: none"> <li>• Post</li> <li>• Comments</li> </ul>
Documents	Document Library
URLs	Data Items

---

Mail Messages	<ul style="list-style-type: none"><li>• Document Library(MSG files)</li><li>• Generic (Custom) List (data-items with attachments).</li></ul>
Wiki	<ul style="list-style-type: none"><li>• Wiki Page Library</li><li>• Page Library</li></ul>

---

# 3 COPYRIGHT AND TRADEMARK

© Copyright 2024. Tzunami Inc. All rights reserved.

All intellectual property rights in this publication are owned by Tzunami, Inc. and protected by United States copyright laws, other applicable copyright laws and international treaty provisions. Tzunami, Inc. retains all rights not expressly granted. No part of this publication may be reproduced in any form whatsoever or used to make any derivative work without prior written approval by Tzunami, Inc.

No representation of warranties for fitness for any purpose other than what is specifically stated in this guide is made either by Tzunami, Inc. or by its agents.

Tzunami, Inc. reserves the right to revise this publication, and/or make improvements or changes in the product(s) and/or the program(s) described in this documentation at any time without prior notice.

Any software on removable media described in this publication is furnished under a license agreement included with the product as a separate document. If you are unable to locate a copy, please contact Tzunami, Inc. and a copy will be forwarded to you.

Tzunami is either a registered trademark or a trademark of Tzunami, Inc. in the United States and/or other countries.

All other brand or product names are trademarks or registered trademarks of their respective companies.

For further information, you can contact Tzunami Inc. at:

Tzunami Inc.

601 108th Avenue, NE

Suite 1900

Bellevue, WA 98004, USA

Email: [sales@tzunami.com](mailto:sales@tzunami.com), [support@tzunami.com](mailto:support@tzunami.com)

Web: <http://www.tzunami.com>