



# **Tsunami Deployer**

## **Confluence Cloud Exporter Guide**

Supports extraction of Confluence Cloud contents and migrate to Microsoft SharePoint using Tsunami Deployer.

Version 4.0

Last Updated: April 29, 2024

# Table of Contents

---

<b>PREFACE .....</b>	<b>IV</b>
INTENDED AUDIENCE.....	IV
CONVENTIONS .....	IV
TECHNICAL SUPPORT.....	V
COMMENTS AND SUGGESTIONS .....	V
<b>1   INSTALLING TZUNAMI CONFLUENCE CLOUD EXPORTER.....</b>	<b>1-6</b>
1.1   SYSTEM REQUIREMENTS.....	1-7
1.2   PERMISSION REQUIREMENTS.....	1-7
1.3   INSTALLING TZUNAMI CONFLUENCE CLOUD EXPORTER .....	1-8
1.4   UNINSTALL TZUNAMI CONFLUENCE CLOUD EXPORTER .....	1-10
1.4.1   Uninstallation using Installer .....	1-10
1.4.2   Uninstallation using Control Panel.....	1-11
1.5   CONFIGURATION OF TZUNAMI SERVICE SETTINGS.....	1-12
<b>2   TZUNAMI CONFLUENCE CLOUD EXPORTER .....</b>	<b>2-13</b>
2.1   OVERVIEW .....	2-14
2.1.1   Supported Types .....	2-14
2.1.2   Security .....	2-14
2.2   EXPORTING FROM CONFLUENCE CLOUD .....	2-15
2.3   COMMAND-LINE EXPORT.....	2-25
2.4   LOGGING SETTINGS.....	2-26
2.5   BEST PRACTICES.....	2-27
<b>3   COPYRIGHT AND TRADEMARK.....</b>	<b>3-28</b>

## List of Tables

---

Table 1-1: System Requirements .....	1-7
Table 2-1: Confluence Configurations, General Tab – Description of Fields .....	2-16
Table 2-2: Confluence Configurations, Advanced Tab – Description of Fields .....	2-16
Table 2-3 Confluence Configurations, Direct Roots Tab - Description of fields.....	2-18
Table 2-4: Confluence Configurations, Actions Tab - Description of fields .....	2-18
Table 2-5 Connection – Description of Fields .....	2-19
Table 2-6 Analyzer Information Description.....	2-20
Table 2-7: Target Structure Guidelines .....	2-27

## List of Figures

---

Figure 1 Permission for migration user.....	1-7
Figure 1-2: Welcome Window: .....	1-8
Figure 1-3: End-User License Agreement Window .....	1-8
Figure 1-4: Custom Setup Window .....	1-9
Figure 1-5: Installing Tsunami Confluence Cloud Exporter Window .....	1-9
Figure 1-6: Installation Complete Window .....	1-10
Figure 1-7 Deployer Settings Manager .....	1-12
Figure 2-1: Confluence Configurations Screen – General Tab .....	2-15
Figure 2-2: Confluence Configurations Screen – Advanced Tab.....	2-16
Figure 2-3 Confluence Configurations Screen – Direct Roots Tab .....	2-17
Figure 2-4: Confluence Configurations Screen – Actions Tab.....	2-18
Figure 2-5 Connection Screen for Confluence Server on cloud .....	2-19
Figure 2-6 Analyze Option.....	2-20
Figure 2-7 Analyzer Information .....	2-20
Figure 2-8 Global ACL Mapping file.....	2-21
Figure 2-9 Folder Selection Screen .....	2-22
Figure 2-10: Filter Screen .....	2-22
Figure 2-11: Destination Folder Screen .....	2-23
Figure 2-12: Exporter Progress Screen.....	2-24
Figure 2-13 Log level Settings .....	2-26

# PREFACE

This guide provides installation procedures for Tsunami Confluence Cloud Exporter and detail steps to extract contents from Confluence using Tsunami Confluence Cloud Exporter. The guide also describes how to extract contents non-interactive way using command-line instructions and best practice.

This preface contains the following topics.

- *Intended Audience*
- *Conventions*
- *Technical Support*
- *Comments and Suggestions*

## INTENDED AUDIENCE

Tsunami Confluence Cloud Exporter Guide is intended for:

- System Administrators who are responsible for exporting Confluence contents and setting migration environment using Tsunami Deployer.
- Project Managers and IT Managers who create and regulate usage of Tsunami Deployer and Tsunami Confluence Cloud Exporter.

## CONVENTIONS

The following text conventions are used in this document:

- Commands and keywords are given in **boldface**.
- Terminal sessions, console screens, or system file names are displayed in fixed width fonts.



**Caution** indicates that the described action might result in program malfunction or data loss.



**Notes** contain helpful suggestions about or references to materials not contained in this manual.



**Tips** provide information that might help you solve a problem.

## TECHNICAL SUPPORT

Before contacting Tsunami Support team, ensure that you are referencing the latest copy of this user guide (Ctrl+Click to follow link) [Tsunami Deployer Confluence Exporter Guide](#).

For additional information, please contact Tsunami Support Team at [support@tsunami.com](mailto:support@tsunami.com)

## COMMENTS AND SUGGESTIONS

Your feedback is important to us and will help us to provide the most accurate and high quality information possible in our documentation. Send us comments or suggestions by email to [support@tsunami.com](mailto:support@tsunami.com). Be sure to include as much of the following as possible:

- The document title.
- The location that the document was accessed from (either downloaded from Tsunami web site or the Tsunami Deployer User Guide and Tsunami Confluence Cloud Exporter Guide available in Tsunami Deployer).
- The section or chapter number and the original text found in the document.



When you send information to Tsunami Support Team, you grant Tsunami a right to use or distribute the information internally within Tsunami Development and Support team for diagnostic purpose.

# 1 INSTALLING TZUNAMI CONFLUENCE CLOUD EXPORTER

This chapter contains information about installing Tzunami Confluence Cloud Exporter. It contains the following topics:

- *System Requirements*
- *Permission Requirements*
- *Installing Tzunami Confluence Cloud Exporter*
- *Uninstall Tzunami Confluence Cloud Exporter*
- *Configuration of Tzunami Service Settings*

## 1.1 SYSTEM REQUIREMENTS

The following table lists the system requirements for Tsunami Confluence Cloud Exporter.

Table 1-1: System Requirements

Components	Minimum Requirements
Computer and processor	2GHz Pentium processor or equivalent
Memory	2 GB (Minimum); 4GB (Recommended)
Hard disk	50Mb (additional space will be required for the Tsunami Deployer projects, which may vary from 10 Mb to 4 GB).
Supported Operating System	Windows Server 2008/2012, Windows Vista, Windows 7, Windows 8 & Windows 10 or higher.
Supported Architectures	x86 and x64
Network	Intranet/Internet access depending on connectivity requirements
Display	800 x 600, 256 colors (minimum); 1024 x 768 high color
Microsoft .NET Framework	Microsoft .Net Framework 4.5.1 (including lower versions like 2.0, 3.0, 3.5 and 4.0)

## 1.2 PERMISSION REQUIREMENTS

For connecting to Confluence server using Tsunami Confluence Cloud Exporter, you need to have the Site Admin access with 'Site Administrator' role. And the user should be member of 'administrator', 'confluence-users' and 'site-admins' groups.

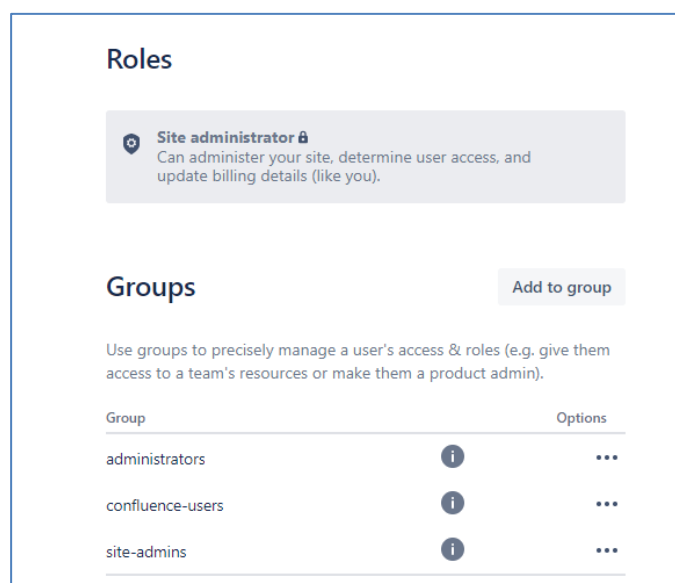


Figure 1 Permission for migration user

Please, contact the confluence administrator and ask for the required roles for the user who will connect the server via **Tsunami Confluence Cloud Exporter** for migration.

## 1.3 INSTALLING TZUNAMI CONFLUENCE CLOUD EXPORTER

You can install Tsunami Confluence Cloud Exporter on any machine from which you can connect to Confluence Application Server.

**To install Tsunami Confluence Cloud Exporter:**

1. Unzip the zip file, and run TsunamiConfluenceCloudExporter.msi. The Tsunami Confluence Cloud Exporter setup wizard will launch. To advance through the install wizard, click **Next**.

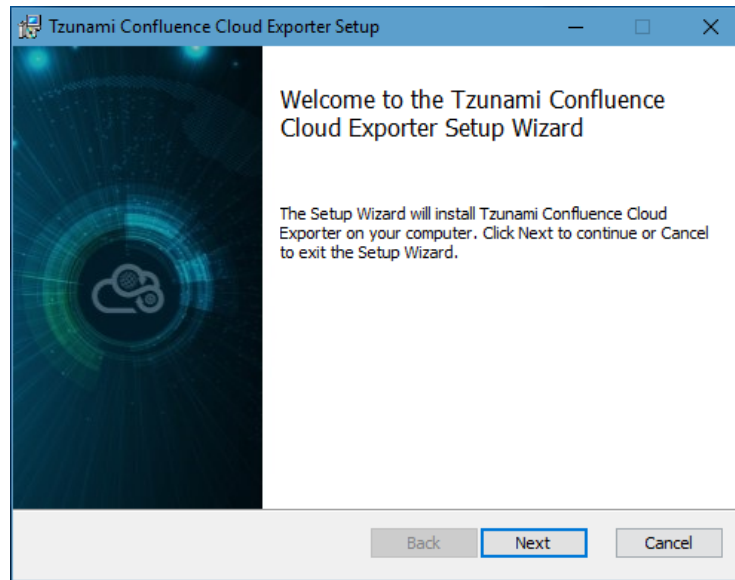


Figure 1-2: Welcome Window:

2. In the End-User Licensing Agreement panel, click **"I accept the terms in the License Agreement"** and click **Next** to continue installation.

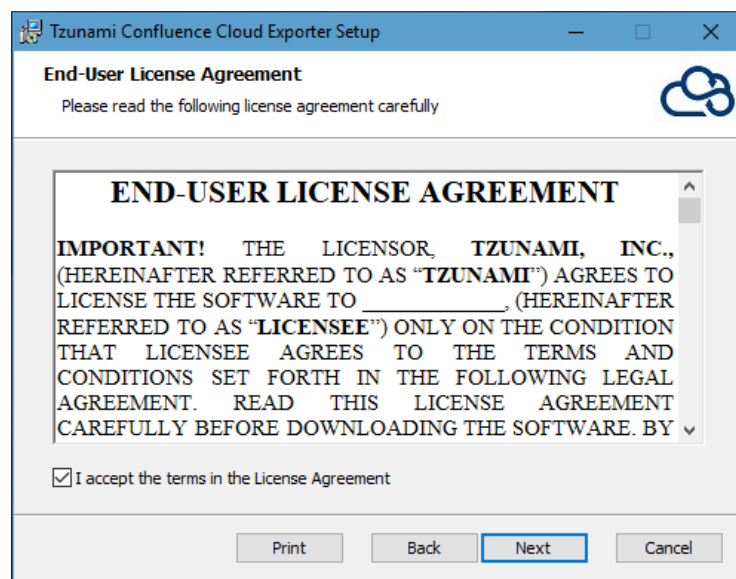


Figure 1-3: End-User License Agreement Window





You are advised to read the terms of the license carefully before proceeding with the installation. If you decline the license terms, the installation will not proceed.

3. In the Custom Setup panel, do one of the following:
  - To accept the default Destination Folder, click **Next**.
  - Click **Browse**, locate and select a destination folder, click **OK**, and then click **Next**.

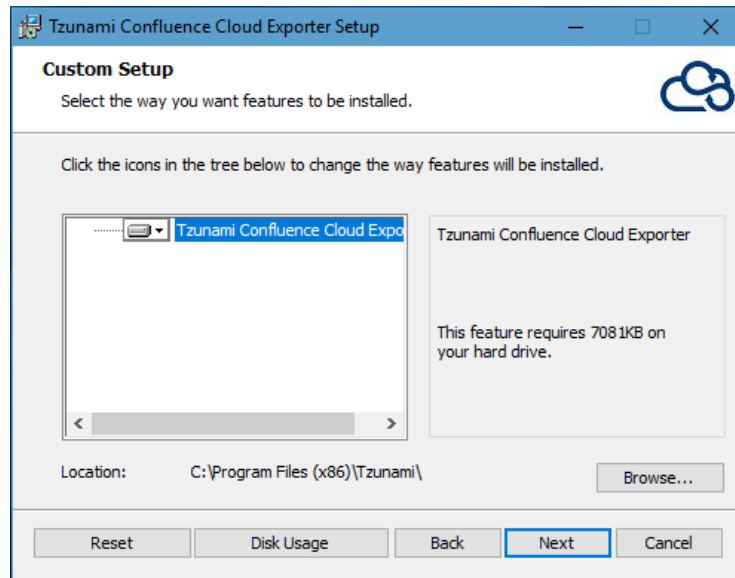


Figure 1-4: Custom Setup Window

4. In the Ready to install Tsunami Confluence Cloud Exporter panel, click **Install**. Confluence Exporter is installed.

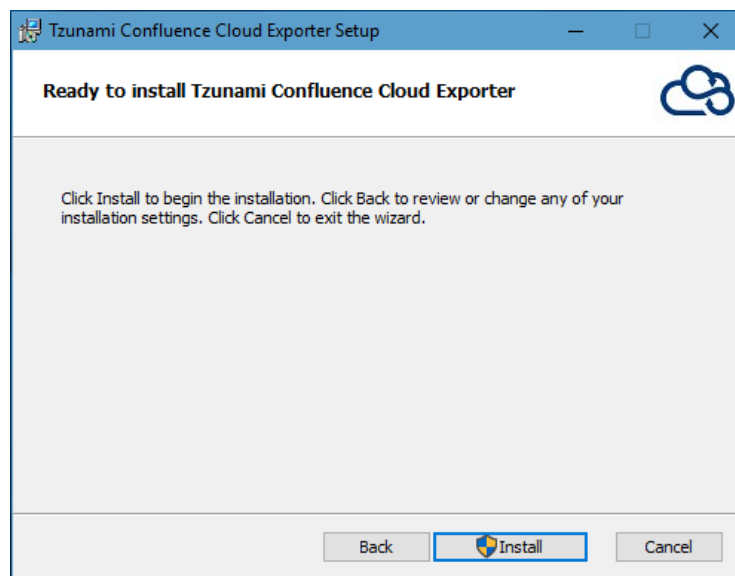
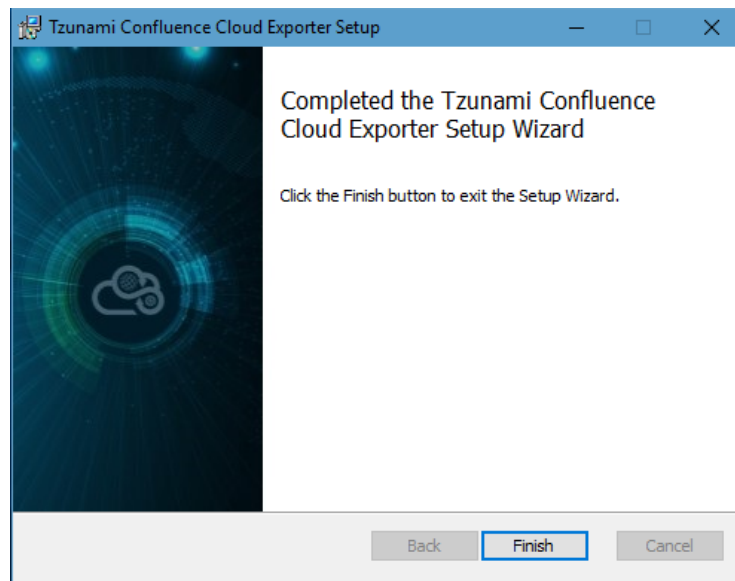


Figure 1-5: Installing Tsunami Confluence Cloud Exporter Window

5. Click **Finish** to exit from the setup wizard.



**Figure 1-6: Installation Complete Window**



When Tsunami Confluence Cloud Exporter is installed, it comes with a default license that can be used for evaluation purpose only. This license is limited in time and number of operations.

## 1.4 UNINSTALL TZUNAMI CONFLUENCE CLOUD EXPORTER

This section of the guide illustrates different ways to remove or uninstall Tsunami Confluence Cloud Exporter from your Confluence Server. Here are the two different ways to uninstall Tsunami Confluence Cloud Exporters:

- Uninstallation using Installer
- Uninstallation using Control Panel

To uninstall Tsunami Confluence Cloud Exporter, user needs to be a Local Administrator in the Confluence Exporter installed machine. Uninstalling Tsunami Confluence Cloud Exporter is simple and easy. You can remove or uninstall it in no time. You don't need to reboot your computer once the uninstalling process is complete.



Log files, licensing information files etc. will remain after uninstalling Tsunami Confluence Cloud Exporter. You can manually delete those files from your computer if needed. By default logs are located at the "C:\Program Files\Tsunami\Deployer 4.0\Exporter\ConfluenceCloud\Logs", or where Tsunami Confluence Cloud Exporter is installed. Tsunami Confluence Cloud Exporter Options information will be available in "C:\Documents and Settings\All users\Application Data\Local\Tsunami" location.

### 1.4.1 Uninstallation using Installer

**To uninstall Tsunami Confluence Cloud Exporter using Installer**

1. Close **Tsunami Confluence Cloud Exporter**.
2. Unzip the zip file, and run TsunamiConfluenceCloudExporter.msi. The Tsunami Confluence setup wizard (Welcome window) will launch. To advance through the remove installation wizard, click “**Next**” at the bottom of the screen.
3. In the Change, repair or remove installation panel, click “**Remove**” button to proceed to remove Tsunami Confluence Cloud Exporter from your computer.
4. In the Ready to remove Tsunami Confluence Cloud Exporter panel, click “**Remove**” to remove Tsunami Confluence Cloud Exporter from your computer.
5. Click **Finish** to exit the setup wizard.



You can right-click Tsunami Confluence Cloud Exporter setup (TsunamiConfluenceCloudExporter.msi) file and select **Uninstall** to remove or uninstall Tsunami Confluence Cloud Exporter from your computer.

## 1.4.2 Uninstallation using Control Panel

### To uninstall Tsunami Confluence Cloud Exporter using Control Panel

1. Close **Tsunami Confluence Cloud Exporter**.
2. Click **Start > Control Panel > Add or Remove Programs**.
3. In Add or Remove Programs window, right-click the Tsunami Confluence Cloud Exporter application you want to remove, and then click **Uninstall**.

## 1.5 CONFIGURATION OF TZUNAMI SERVICE SETTINGS

1. When installing **Tsunami Deployer/Exporter/Remote Service** for the first time, a **Tsunami Service Settings** dialog is displayed. In **Tsunami Service Settings**, the Licensing Service, Link Resolver Service and O365 AD Service are pointed to localhost (same machine) and port.

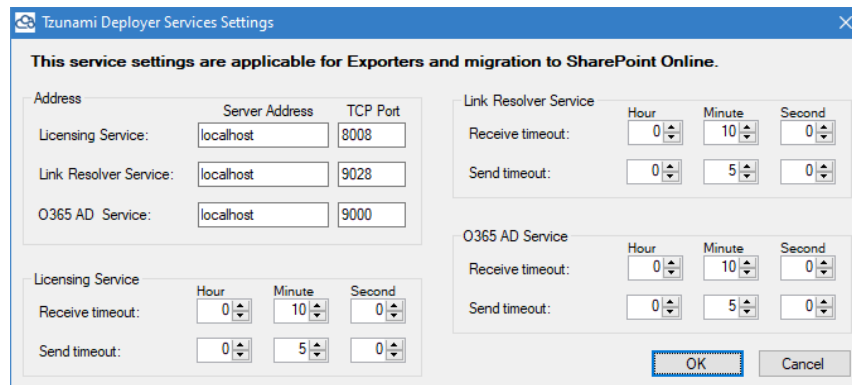


Figure 1-7 Deployer Settings Manager



User can run the **Settings Manager.exe** application from the installation directory to display this service settings dialog at any time and updated the settings to point the Tsunami services as required.

If these services are installed in another machine, point to that machine with machine name or IP Address and port.

**Licensing Service:** TCP port 8008 (or the port that the Licensing Service is listening on)

**Link Resolver Service:** TCP port 9028 (or the port that the Link Resolver Service is listening on)

**O365 AD Service:** TCP port 9000 (or the port that the O365 AD Service is listening on).

2. Click on **OK**.

## 2 TZUNAMI CONFLUENCE CLOUD EXPORTER

This chapter contains information of Tzunami Confluence Cloud Exporter. It contains the following topics:

- *Overview*
- *Exporting from Confluence*
- *Command-line Export*
- *Logging settings*
- *Best Practices*

## 2.1 OVERVIEW

Tsunami Confluence Cloud Exporter enables organizations to migrate contents from Confluence to SharePoint 2007, SharePoint 2010, SharePoint 2013, SharePoint 2016, SharePoint 2019 and SharePoint Online using Tsunami Deployer. Tsunami Confluence Cloud Exporter is easy-to-use and convenient way to extract contents from Atlassian Confluence and load contents into Tsunami Deployer.

To load Confluence content into Tsunami Deployer, you must first extract the content, using Tsunami Confluence Cloud Exporter, into TDX (Tsunami Deployer Export) and STDx (Separate Tsunami Deployer Export) files. You can then load this TDX file into a Tsunami Deployer project.



When working with Tsunami Deployer on several machines, you can run an export on one machine and load the exported data on another. Tsunami Confluence Cloud Exporter is an extension module of Tsunami Deployer. You can work with this module independent of Tsunami Deployer or from within the Deployer.

### 2.1.1 Supported Types

The Tsunami Confluence Cloud Exporter supports extraction of basically seven categories of contents from Confluence Server:

- Spaces
- Personal Spaces
- Pages
- Blogs
- Bookmarks
- Comments
- Attachments

### 2.1.2 Security

In addition to the structure and items, Tsunami Confluence Cloud Exporter extracts security information. The following permissions are used in the exporter:

- None
- Viewer
- Contributor
- Admin

Each item is assigned an ACL defining the permissions of the various members according to the roles they were assigned.



The exporter automatically creates four default roles that are used during the deployment process. The roles include None (No permission), Viewer (Read permission on Comments, Pages and Blogs), Contributor Edit (Add, Edit and Delete permissions on Pages, Blogs, Comments and Attachments), and Admin (change access permissions and owner of Pages).

## 2.2 EXPORTING FROM CONFLUENCE CLOUD

The Tsunami Confluence Cloud Exporter enables you to export Confluence Cloud contents to a TDX file. It has simple user interface and lets you quickly extract contents such as Spaces, Pages, Blogs, Comments, Attachments, Bookmarks etc.



When exporting, keep the following in mind:

**Export in small chunks:** When exporting from your source system, perform the export in small chunks of about 40K-50K files each that have a common business logic or some other logic.

**Ensure consistency:** Make sure that the content of the different exports does not overlap and that, while exporting, no changes are made to the source data.

### To export to a TDX file:

1. In Tsunami Deployer, right-click in the Confluence Cloud tab source store area and select **Export Confluence Cloud to TDX**.

Or

Click **Start > All Programs > Tsunami > Tsunami Confluence Cloud Exporter**

The Welcome screen of the Export Wizard appears.

2. Click **Next**. The Confluence Configurations screen appears with two tabs: General and Advanced

#### a. General tab

The **General** tab allows you to select the item types that you wish to export from Confluence server. Select the item types listed in this section.

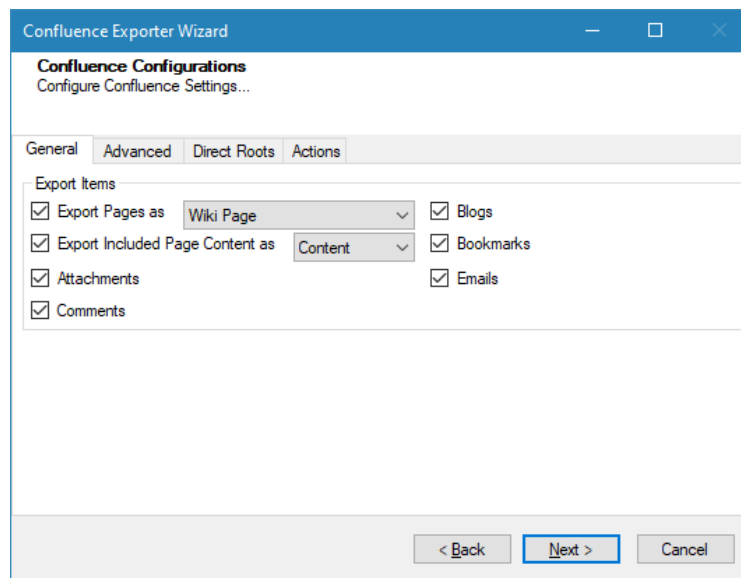


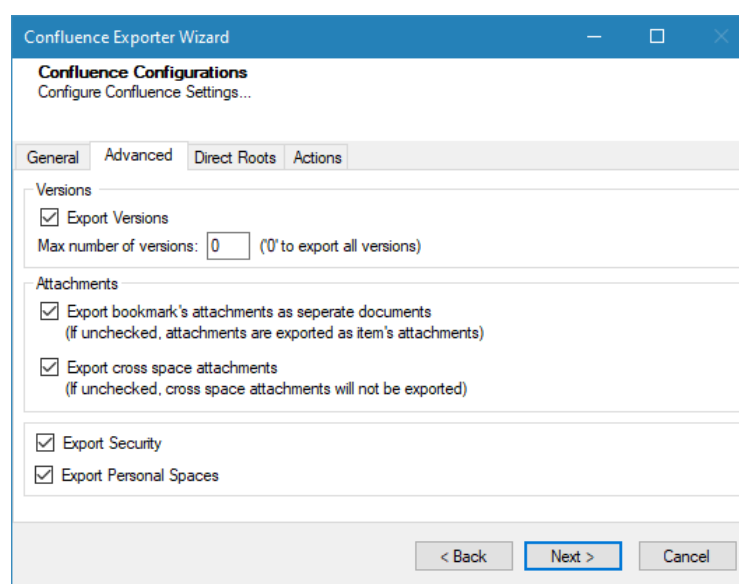
Figure 2-1: Confluence Configurations Screen – General Tab

**Table 2-1: Confluence Configurations, General Tab – Description of Fields**

Field	Description
<b>Export Items</b>	
Export Pages as	Select whether you wish to export pages as Wiki Page or Modern Page or Enterprise Wiki Page.
Blogs	Check this option if you wish to export blogs.
Export Included Page Content as	Select whether you wish to export the content of the Included Pages or export Included Pages as Page Links.
Bookmarks	Check this option if you wish to export bookmarks.
Attachments	Check this option if you wish to export attachments.
Emails	Check this option if you wish to export emails.
Comments	Check this option if you want to export comments.


## b. Advanced tab

The **Advanced** tab allows you to specify the export options such as security, versions and attachments of bookmarks for confluence.





**Figure 2-2: Confluence Configurations Screen – Advanced Tab**

**Table 2-2: Confluence Configurations, Advanced Tab – Description of Fields**

Field	Description
<b>Versions</b>	
Export Version	<p>Check this option if you wish to export all versions of items.</p> <p> Uncheck this option, if you wish to export current versions of each item.</p>



Field	Description
Max number of versions	<p>Enter the number of versions you would like to export for each item.</p> <p> Setting this value to zero will export all versions.</p> <p>If number of maximum versions is specified, number of versions from latest version are exported.</p>
<b>Attachments</b>	
Export bookmark's attachment as separate documents. (If unchecked, attachments are exported as item's attachment.)	Check this option to export all attachments of an item into a folder "<ItemType> Attachments". If you do not check this option, the attachments are exported as item's attachments. Note that checking this option will separate attachments completely from the parent items.
Export cross space attachments (If unchecked, cross space attachments will not be exported)	Check this option if you wish to export cross space attachments of an item into a folder "<ItemType> Attachments". If you do not check this option, cross space attachments will not be exported.
Export security	<p>Check this option if you wish to export security setting of the selected items.</p> <p> The user must have Confluence Administrator permissions in Confluence Server to export security.</p>
Export Personal Spaces	Check this option if you wish to export personal spaces from Confluence server.

### c. Direct Roots tab

The **Direct Roots** tab allows you to enter space key as root folder so that the space will be available to select for export out of the list as well.

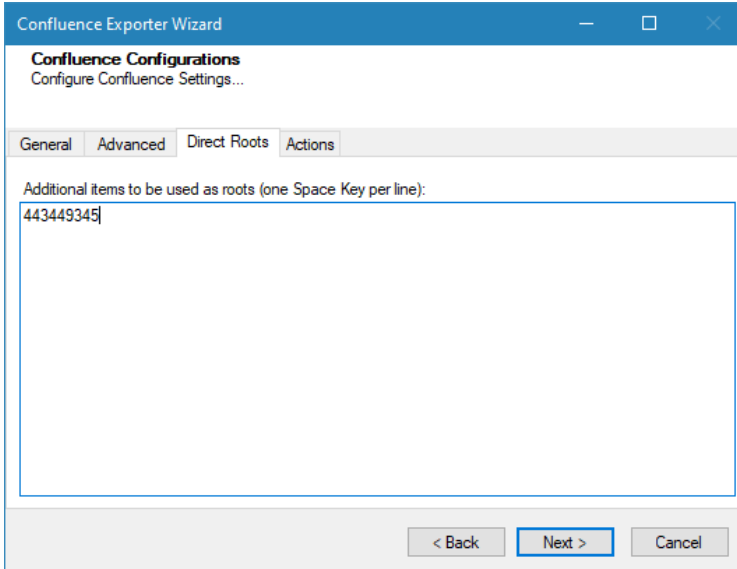


Figure 2-3 Confluence Configurations Screen – Direct Roots Tab

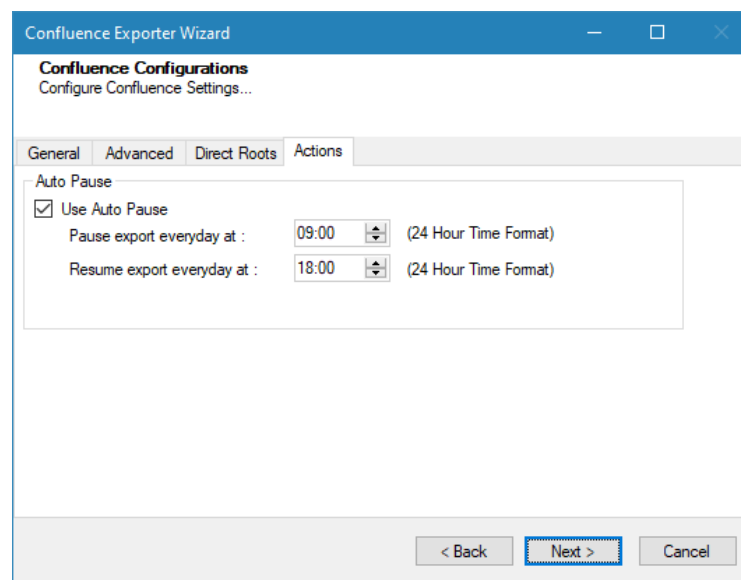
**Table 2-3 Confluence Configurations, Direct Roots Tab - Description of fields**

Field	Description
Additional items to be used as roots (one space key per line)	Enter the space key in the text box to be used as root folder.

#### d. Actions tab

The **Actions** tab allows you to use different actions that can be taken in the exporter.

- **Auto Pause:** The export process is paused and resumed using this functionality at a set time each day. The feature can be turned on or off using the **Use Auto Pause** check box. The feature can be checked by the user, who can also select the pause and resume times. The user can deselect it to turn off the feature.



**Figure 2-4: Confluence Configurations Screen – Actions Tab**

**Table 2-4: Confluence Configurations, Actions Tab - Description of fields**

Field	Description
<b>Auto Pause</b>	
Use Auto Pause	To use the auto-pause and resume feature, select this option. To turn off this function, uncheck this box.
Pause export every day at	Set the daily time that the export process should pause.
Resume export every day at	Set the daily time for restarting the interrupted export operation.

The settings for actions are only applied to this exporter instance that is currently executing when the user clicks the **Next** button.

- Click **Next**. The Connection screen appears. You need to provide the required portal credential to connect to the Confluence server.

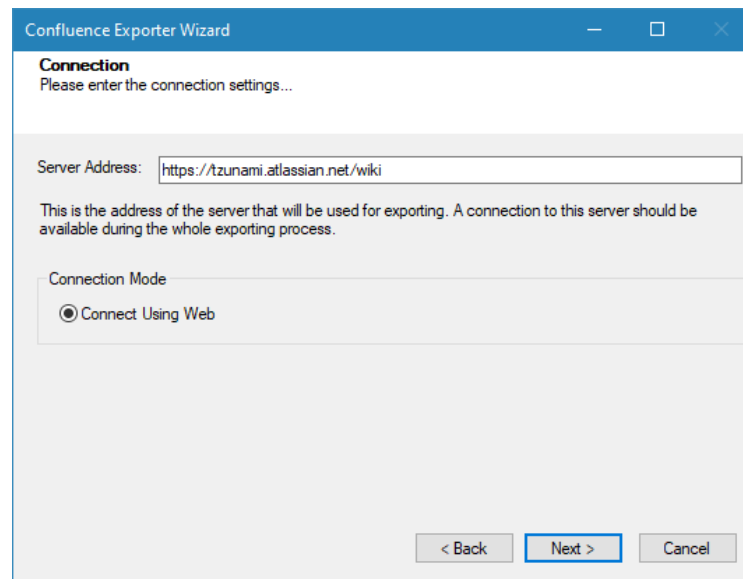


Figure 2-5 Connection Screen for Confluence Server on cloud

Table 2-5 Connection – Description of Fields

Field	Description
Server Address	Enter the URL of the Confluence cloud Server. For example, <a href="https://tzunami.atlassian.net/wiki">https://tzunami.atlassian.net/wiki</a>
<b>Connection Mode</b>	
Connect Using Web	The <b>Connect Using Web</b> radio button is selected in default. User authentication should be provided in the web browser.

Click on **Next** button, a log in page will be displayed in web browser.

Enter the user's credential. Once log-in is successful, consent will be asked. Accept your consent.



The user will receive the token from the server, which the application will use for the remaining operations. The browser will show a page for local host redirection. The user can ignore or close the local host page.

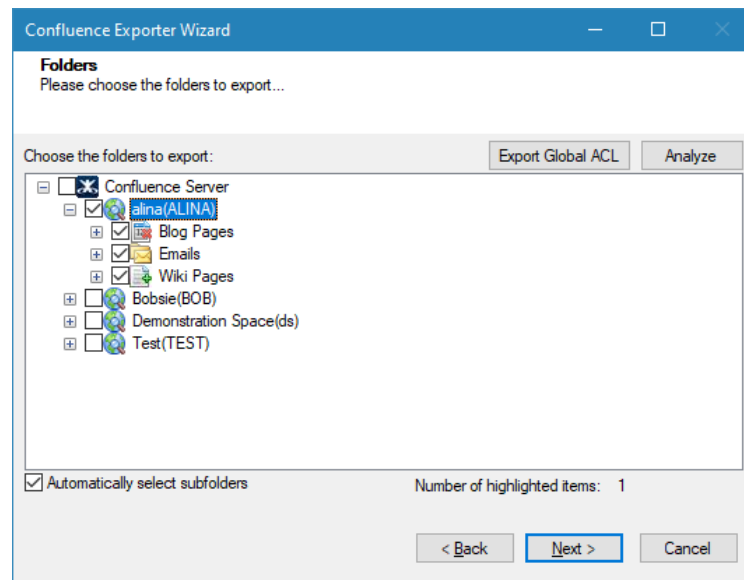
User must have site admin access with site administrator role. The user should be the member of following groups:

- Administrators
- Confluence-Users
- Site-Admins.

4. Click **Next**. The Folders screen appears.

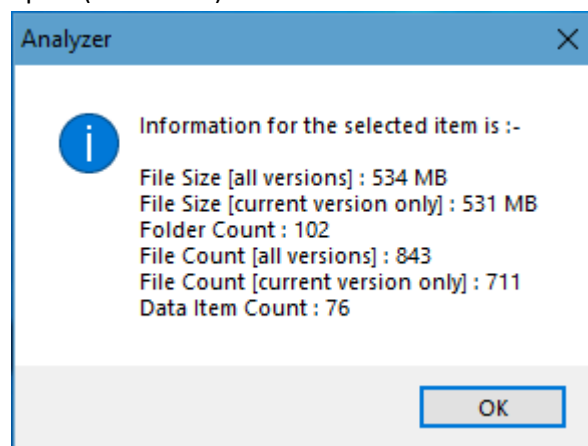
Tsunami Exporter provides quick analysis option before exporting to know the size, count of contents inside selected folder.

If you want to analyze the content: Check on the Folder(s) in tree view, then **Analyze** button is enabled. Click **Analyze**.



**Figure 2-6 Analyze Option**

Analyzer screen appears. Analyzer screen provides the detail information that helps to plan for the export (chunk size) based on File size and number of items.



**Figure 2-7 Analyzer Information**

**Table 2-6 Analyzer Information Description**

Field	Description
File Size [all versions]	Provides the total size of files for all versions of documents.
File Size [current version only]	Provides the total size of files for current version of documents.

Field	Description
Folder Count	Provides the number of folders.
File Count [all versions]	Provides the total number of files for all versions of documents.
File Count [current version only]	Provides the total number of files for current versions of documents.
Data Item Count	Provides the total number of data item.

You can export the Roles, Groups and Users in a file by clicking on **Export Global ACL** button. A progress bar appears while exporting the information. The file is by default exports to:

**Location:** C:\ProgramData\Tsunami\GlobalAclExport\Confluence

**File Name:** global\_acl.xml

This file is used in Tsunami Deployer when using Global ACL Mapping. Refer **Deployer User Guide's** section **Global ACL Mapping** for more details.

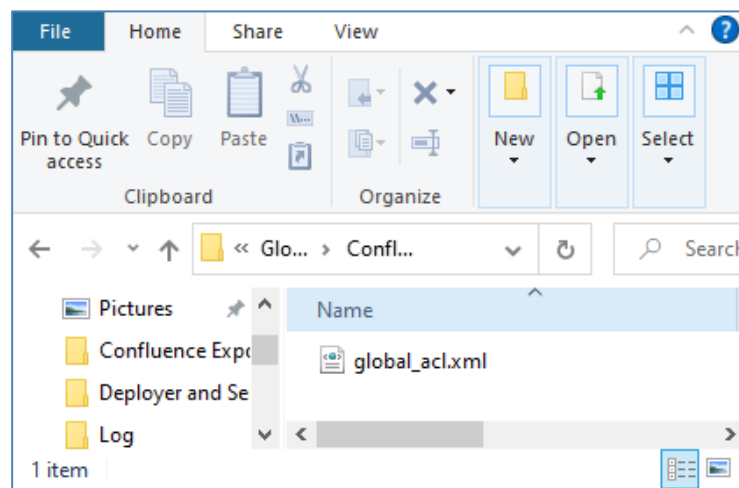


Figure 2-8 Global ACL Mapping file

5. Select the folders to export.

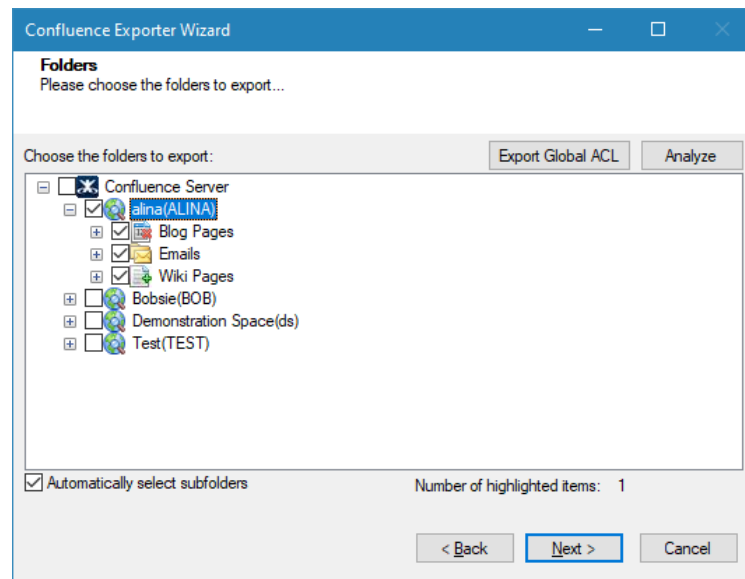


Figure 2-9 Folder Selection Screen

6. Click **Next**. The Filter screen appears.

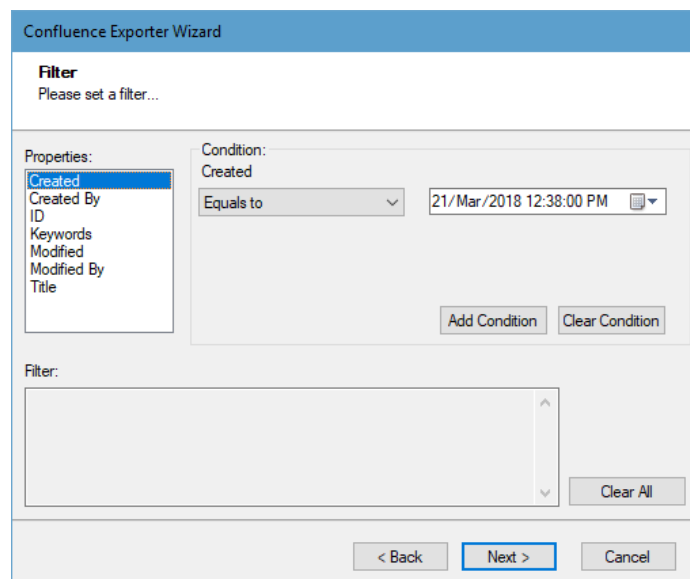


Figure 2-10: Filter Screen

7. Set up filtering as follows:
  - a) In the Properties field, select a property.
  - b) In the Condition field, select a condition from the drop down list and enter or select values in the corresponding field.
  - c) Click **Add Condition**. The condition is added to the Filter area, displaying the full filter expression.



You can only add one condition per property.

You can edit a condition for a property by selecting the property and modifying the condition

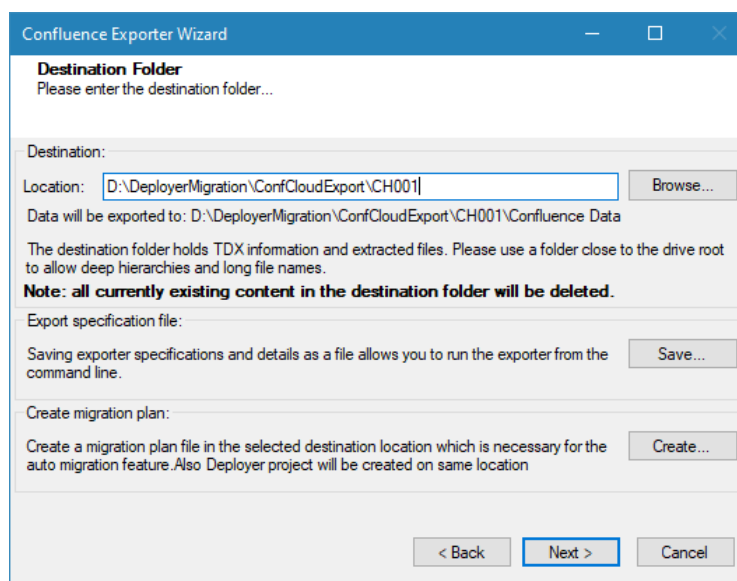
type or values that are currently assigned to it.

You can remove a condition from a property or all the conditions from all the properties by clicking Clear Condition or Clear All, respectively.

This option works only for Data Items.

If multiple conditions are applied, only items that match all conditions are exported.

8. Click **Next**. The Destination Folder screen appears.



**Figure 2-11: Destination Folder Screen**

Specify where to export the files and generated TDX information. Make sure you are saving to a folder with a descriptive name and under a well-organized file system hierarchy. It is recommended to export to a folder that is as close to the root drive as possible.



When exporting deep hierarchy, the property which store the path for exported folder/files may exceed the maximum character supported by the property (typically 260 characters defined in the Windows API). To overcome such condition, it is recommended to export to a folder that is as close to the root as possible.

Starting in Windows 10, version 1607, MAX\_PATH limitations have been removed from common Win32 file and directory functions. Please, refer information published by Microsoft from following link and consult with your system administrator to remove the limitation whenever possible.

<https://docs.microsoft.com/en-us/windows/win32/fileio/maximum-file-path-limitation?tabs=registry>

Click **Save** under **Export specification file** for saving export specification details as an XML file which can be used to run the exporter in command-line mode. See the section '**Command-line Export**' below for more details.

9. Click **Next**.



If the export folder already exists, a warning appears, informing you that the destination folder already exists and if you continue all existing information will be deleted.

Clicking **OK** confirms overwrite and clicking **Cancel** returns you to the Destination Folder screen to change the destination folder.

An Exporting screen appears with a progress bar and execution report, and the export process begins. During the export process, a **Pause** button is displayed. Users can manually pause and resume the export process (despite of scheduled pause/resume time) by clicking on **Pause/Resume** button.

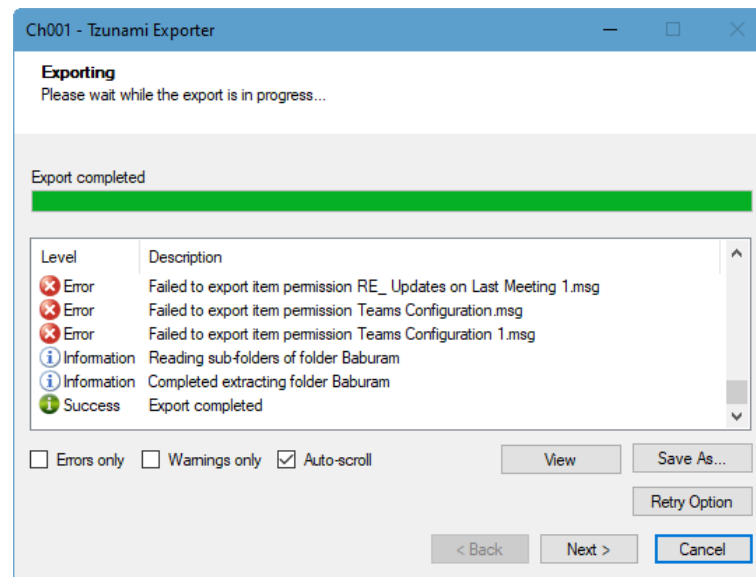


Figure 2-12: Exporter Progress Screen



You can save the export report by clicking **Save As** after export is complete.

You can check **Auto-scroll** to display the latest progress messages, as they appear.

You can display only export errors by checking **Errors only**

You can display only export warnings by checking **Warnings only**

10. Click **Retry Option**, if there are failed item(s).

11. Click **Next**. The Export Complete screen appears.

12. Click **Done**. The Tsunami Confluence Export wizard is closed.

After the extraction process completes successfully, you are prompted to load the exported data into the current Tsunami Deployer project. Clicking '**Yes**' begins the process of loading the content from the previously exported TDX file into the project. For more information about loading sources, refer to the [Tsunami Deployer User Guide](#).



## 2.3 COMMAND-LINE EXPORT

Tsunami Exporter for Confluence provides the ability to run export sessions non-interactively using command line instructions. This allows administrators to plan and schedule long running migration jobs through scripts, batch files and schedulers according to needs and organizational timetables. To run the exporter in batch mode you will need exporter specification file explained in the 'Choose Destination Folder' step of the export wizard. The file contains all the export option details including:

- Source ECM connectivity information (Server Address, User Name, Password etc.)
- Items to export
- Destination and Log Folder
- Filter
- Exporter specific options

This file can be edited to suit your needs however the XML schema of the file should not be altered. It is recommended that you generate a sample specifications file in the **Destination Folder Screen** selection step of the export wizard and use it as a template to create your own specification file.

Once the specification file is ready, you can run the exporter from command line using command:

### Usage

Field	Description
-r	Outputs export results into an XML file [Optional]
-s	XML file containing export specifications

### For example:

```
C:\User\Administrator> "C:\Program Files (x86)\Tsunami\Deployer  
4.0\Exporters\ConfluenceCloud\TsunamiExporter.exe" -s "D:\Spec Files\specs1.xml"  
  
C:\Program Files (x86)\Tsunami\Deployer 4.0\Exporters\ConfluenceCloud>  
TsunamiExporter.exe -s "D:\Spec Files\specs1.xml"
```

Based on your needs you can create number of specification files and use them to run multiple export sessions as batch commands.



You will need to provide absolute path for **TsunamiExporter.exe** and **ExportSpecificationsFile** in the command if you are not running the command from the exporter installation directory.

In Microsoft Windows 10, Windows 8, Windows 7, Windows Vista and Windows Server 2003/2008/2012 environment, if UAC (User Access Control) is enabled, Users with low privileges sometimes cannot export ECM contents. To export contents using command line, User must run with elevated or administrative privileges.

To export contents with elevated or administrative privileges, you can run the exporter from command line using command:

```
RUNAS /trustlevel:"Unrestricted" "<ExporterInstallationDirectory>\TsunamiExporter.exe"  
-s "<Spec file path>\Specfilename.xml "
```

**For example:**

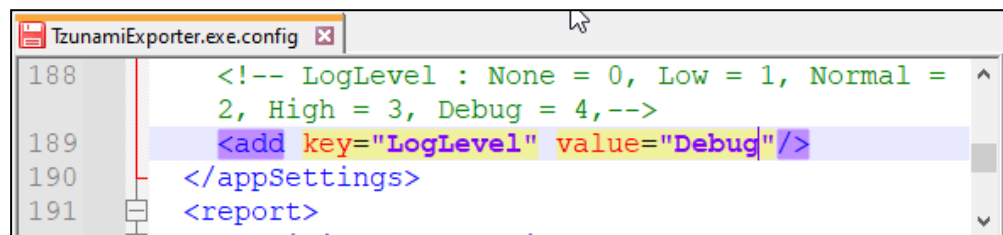
```
RUNAS /trustlevel:"Unrestricted" "C:\Program Files (x86)\Tsunami\Deployer  
4.0\Exporters\ConfluenceCloud\TsunamiExporter.exe" -s "D:\Spec Files\specs1.xml"
```

## 2.4 LOGGING SETTINGS

In Tsunami Exporter, log is written in a persistent medium having as much information as possible about events that occur while the software runs. That information plays a vital role while diagnosing if any issue occurs during the export process. Hence, it is worth mentioning that logger writes each and every details during.

Tsunami Inc provides the settings for writing logs. There are the following log levels that the user can change before running the tool.

1. Go to installation directory of the exporter and open **TsunamiExporter.exe.config** file in an editor.
2. Locate the key and set corresponding values as mentioned below:
  - **LogLevel:** Set the esteem to "Debug" or "High" or "Normal" or "low" or "none".



**Figure 2-13 Log level Settings**

- **Debug:** Writes logs as much as possible. So, this setting includes the maximum level of verbosity. By default, the tool is packaged with this setting.
- **High:** Writes logs as much as possible for warnings and errors. However, it will not log possible diagnostic information.
- **Normal:** Writes logs for anticipated errors and warnings.
- **Low:** Critical errors are logged. There will be as low as possible information logged.

- **None:** No such logs are written.

3. Save the file. Then run the exporter.

## 2.5 BEST PRACTICES

Due to the technological differences between Confluence and SharePoint, the following best practices should be taken into consideration:

- Migrate folders to their relative list types, based on the items in those folders:

**Table 2-7: Target Structure Guidelines**

Confluence Item Type	Relevant SharePoint Types
Space	Site
Personal Space	My Site Collection
Pages	Wiki Page Library
Blogs/News	Blog Posts
Blog Comments	Blog Comments
Bookmarks	Link Lists
Comments	Discussion List
Attachments	Document Library

- The Confluence Spaces contain the User ACLs. All the child folders and items inherit security from it. If Confluence Spaces is not extracted as a root folder, the selected child folders of Confluence Spaces contain the User ACL and child items inherit security.
- To export security, the user must have Confluence Administrator Permissions.

# 3 COPYRIGHT AND TRADEMARK

© Copyright 2024. Tzunami Inc. All rights reserved.

All intellectual property rights in this publication are owned by Tzunami, Inc. and protected by United States copyright laws, other applicable copyright laws and international treaty provisions. Tzunami, Inc. retains all rights not expressly granted. No part of this publication may be reproduced in any form whatsoever or used to make any derivative work without prior written approval by Tzunami, Inc.

No representation of warranties for fitness for any purpose other than what is specifically stated in this guide is made either by Tzunami, Inc. or by its agents.

Tzunami, Inc. reserves the right to revise this publication, and/or make improvements or changes in the product(s) and/or the program(s) described in this documentation at any time without prior notice.

Any software on removable media described in this publication is furnished under a license agreement included with the product as a separate document. If you are unable to locate a copy, please contact Tzunami, Inc. and a copy will be forwarded to you.

Tzunami is either a registered trademark or a trademark of Tzunami, Inc. in the United States and/or other countries.

All other brand or product names are trademarks or registered trademarks of their respective companies.

For further information, you can contact Tzunami Inc. at:

Tzunami Inc.

601 108th Avenue, NE

Suite 1900

Bellevue, WA 98004, USA

Email: [sales@tzunami.com](mailto:sales@tzunami.com), [support@tzunami.com](mailto:support@tzunami.com)

Web: <http://www.tzunami.com>